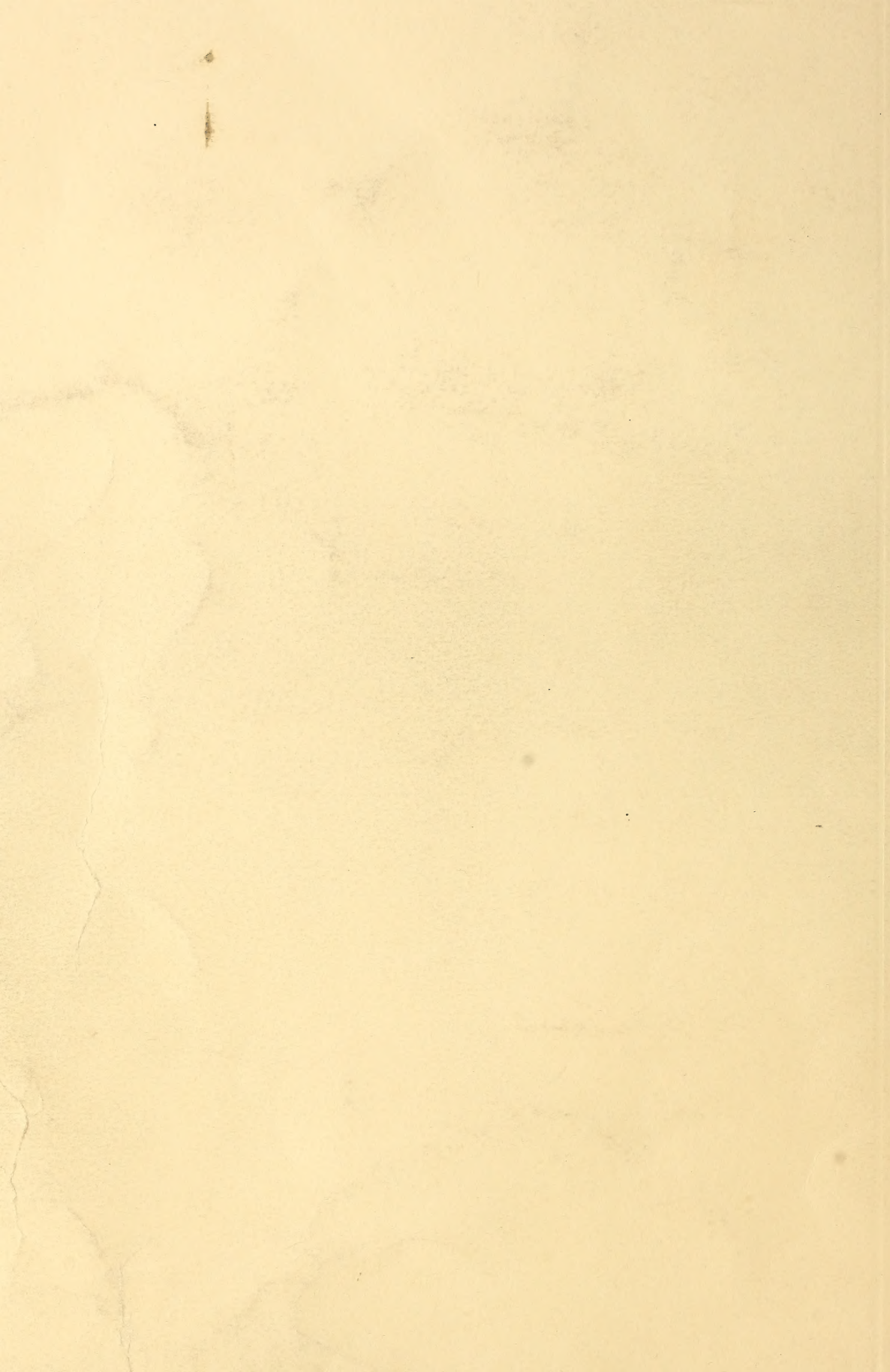


## Historic, archived document

Do not assume content reflects current scientific knowledge, policies, or practices.



1932  
**Barnard's  
Seeds**

LIBRARY  
RECEIVED  
★ JAN 25 1933 ★  
U. S. Department of Agriculture.

Vegetable Seed Trials

MAR 19 1932

Vegetable  
Seed Trials

**The W. W. Barnard Co.**

Seedsman

3942 S. Federal St.,

Chicago, Illinois

Phone Boulevard 8160

## Hints to Those Who Have a Small Garden

First of all, as soon as the ground has dried out it should be dug fully a spade deep, and if it has not been used previously for growing plants the soil should be turned over and left in a rough state for a few days so that the sun and air may sweeten it; at this time a light dressing of Wood Ashes or air slaked lime would correct any acidity (sourness) of the soil and also prove beneficial to the plants grown.

A good spading fork is a necessity, for you can turn over the soil easier than with a spade; forked soil will break into smaller pieces, while spaded soil is inclined to remain in slices just as it was turned up, and requires more effort to get it fine and mellow for the seeds.

Push the spade or fork down as deep as you can, so as to loosen the under soil; you won't have to lift the whole mass and turn it over, but it is necessary that the soil be broken as deep as possible.

The soil should not be so wet when spaded that it is "sticky" for when it dries out it will remain in the same lumpy condition as when first turned. Take a good handful of dirt and squeeze it—if it sticks together it is too wet to work; better wait a day or two before spading, then break the lumps with the hoe, and finish the work with a steel garden rake. Sandy soil can be worked several days earlier than clay.

If the ground is low and inclined to hold water late in spring, or during wet spells in summer, you will find that it will pay to underdrain, provided you can get an outlet for the tile. If you have a city garden, this will probably be out of the question, and you will have to wait until the ground gets dry enough to work.

If the soil is poor or "worn out," an application of pulverized Sheep Manure, Bone Meal or Commercial Fertilizer may be used to great advantage; spread it broadcast on the surface after digging the ground and before leveling, then in the process of leveling and preparing the soil the manure will be thoroughly mixed upon the surface where all plants will be sure to be benefited.

Seed should be sown in straight rows over the patch, as the making of beds is a waste of space and the walks between the beds get so packed that the soil is spoiled for use the following season. DO NOT SOW SEED TOO DEEP; this is a common error. The smaller seeds such as Lettuce, Onion, Radish, etc., should only be covered from a fourth to half an inch; Cucumber and Melon about one inch; Corn, Peas and Beans may be covered two inches, but in every instance be sure to press the soil firm over the seed sown after covering. Another error is frequently made in sowing seed too thick; it will be found an advantage to thoroughly mix small seed (especially Carrot) with dry sand or soil and sow the mixture in the seed furrow; this will keep the seeds apart and help in the process of thinning out or transplanting plants to stand at their proper distance apart in the rows.

Do not blame the seedsman when the seeds fail to come up. If the seeds are planted too deep, they either rot in the cold soil, or, if germination does take place, the tender shoot dies before it can reach light and air.

Seeds of the so-called hardy vegetables, like the onions, extra early peas, etc., may be sown as early in spring as the garden can be worked. Beet and lettuce seed may be sown two or three weeks earlier than the tender vegetables, like the beans, sweet corn, cucumbers, etc. Tomatoes, eggplants and peppers are planted later in the season when the ground is thoroughly warmed, provided they have not been started in the hotbed.

If you make an open-ground seed-bed for such plants as cabbage, celery, peppers, tomatoes and others that require transplanting be sure that it does not become dry; neither should it be "soaked" with water, for too much moisture will make the plants "damp off" even if they are in the open air. Experience is the best teacher, and if you watch the plants carefully, you will quickly discover when they need a drink.

The little plants must be moved from the seed-bed or frames to their permanent quarters as soon as they are large enough to handle. Don't take all of them out of the seed-bed at once and let them lie exposed to the air and sun. Take up a few at a time, as you need them; get them into the new home as quickly as you can; spread the rootlets in the bottom of the hole, don't drop them straight down so that they stand in a solid mass; press the soil firmly around and over the roots, so that there will be no air-spaces; if the sun is hot, or there is a drying wind, shade the plants for a day or two with berry-boxes or paper cones.

If the seedlings have made a rapid growth in the frame or bed, and seem to be soft or tender, trim off some of the larger leaves, so that the moisture will not be thrown off so rapidly.

The best time to transplant is just before a rain, or during the early part of the wetting; the ground then is fairly loose and can be packed around the rootlets. The worst time is after a heavy shower or rainy spell, for the ground is too wet, and it is quite likely to bake hard on the surface.

If you keep the top-soil loose, you won't have to water the plants unless there is an extremely dry spell. But if you do use the hose, make a good job of it—give the plants a thorough drenching, for a little water is almost as bad as none at all. The best time is at night; by morning the soil will be slightly dry and can be hoed or raked so as to form a loose soil mulch which will retain the moisture in the lower soil for several days; if the plants are well cultivated, they won't mind a dry spell. The hoe and rake produce better vegetables than the hose.

One of the most important things to insure success and have good vegetables is to keep your garden weeded and cultivated often. Keep the surface loose at all times.

### PLANTING TABLE for SMALL VEGETABLE GARDENS—See Inside Back Page of Cover

We trust that our customers will fully realize that it is to our interest to supply none but the best quality of seeds but with the best of management and good seeds there will be an occasional unaccountable failure.

We give no warranty express or implied, as to description, quality, productiveness, or any other matter of any seeds, bulbs, or plants we send out, and will not be responsible for the crop.

REDUCED COSTS:

enable us to allow a 10% discount from these packet, ounce and pound prices, delivery included.

Cash should accompany order to avoid C.O.D. charges.



# Barnard's Descriptive List of NOVELTIES AND SPECIALTIES IN FLOWER SEEDS

This list is a very careful selection made from our observation and practical experience in growing the many varieties of seeds, etc., offered from all sources and may be relied upon to give the most satisfactory results in the Chicago region.

There are many desirable introductions that we have given a trial and find that they are not suited to our climatic and other conditions.

However, we are prepared to supply many things not mentioned in this list and would ask you to submit your requirements to us.

**THE W. W. BARNARD CO.**

Plants are divided into three classes, Annuals, Biennials and Perennials. **Annuals** are plants which normally live but a single season. **Biennials** are plants living two years; **Perennials** tend to live from year to year. The measurements given through this list indicate the height of plants when fully grown and in bloom.

**ALL FLOWER SEEDS SENT POSTPAID ON RECEIPT OF PRICE**

Half ounces will not be supplied of kinds which sell for less than 30 cents per ounce

## A Valuable Book Free

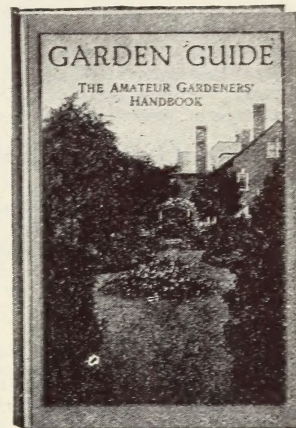
With an order for \$10.00 worth of Flower or Vegetable Seeds in packets or ounces, we will give free of charge one of the most complete garden manuals for the amateur ever published.

### Garden Guide

THE AMATEUR GARDENER'S HANDBOOK

384 Pages, Over 275 Illustrations

**CONTENTS:** Planning the Home Grounds; Lawns and Grass Plots; Hedges and Fences; Trees and Shrubs; The Rose Garden; Hardy Perennials for the Permanent Garden; Annuals and Biennials; Some Garden Favorites and How to Grow Them; Bulbs and Tuberous-Rooted Plants; Hardy Garden Ferns and Water Plants; The Rock Garden; Garden Furniture; Window Boxes and Porch Plants; The Vegetable Garden; Fruit for the Small Garden; Bungalow or Midsummer Garden; Fertilizers; Pruning; Plant Propagation; Transplanting; Winter Protection; Some Common Diseases of Plants and Their Control; Lawn and Garden Weeds; Greenhouses, Hotbeds and Frames; Garden Tools; Calendar of Garden Operations; Animal Life in the Garden; Birds in the Garden; Fruits and Vegetables for Winter; Topics, Miscellaneous.



## Varieties Are Listed in Alphabetical Order



Barnard's Little Gem Alyssum

#### SERVICE

Bring us your gardening problems. We are always glad to help you with them whether they are large or small.

### Ageratum (Floss Flower)

Annual. Succeeds anywhere. Soft blues that combine well with almost anything in the garden. Grows easily from seed. Mix with sand or fine earth to insure even distribution.

**Blue Ball.** New deep, dark blue. The plant is dwarf and symmetrical in shape and when in full bloom the foliage is literally covered with small flowers, giving the appearance of a closely formed blue ball..... Pkt. 15c

**Blue Perfection,** 9 in.; very dark.....10c

**Little Blue Star,** 5 in.; bright blue.....15c

### Alyssum (Mad Wort)

The annual varieties are most popular, with small snow-white blossoms. Extensively used for borders, window and porch boxes. Mix seed with sand to prevent sowing too thickly.

**Little Gem, Barnard's Selected Strain.** We know of no other flower which is so particularly well adapted for borders, ribbons, etc., as our "Little Gem" Alyssum. The plants commence to bloom when quite small and will flower all summer long until late in the fall. Very compact..... 1/4 oz., 30c; Pkt. 10c

**Maritimum (Sweet Alyssum.)** 1 ft. of trailing habit and particularly good for vases, porch and window boxes.....1 oz., 30c; Pkt. 10c

### Anchusa (Alkanet)

**"Blue Bird."** New. An annual Anchusa that grows about 18 inches and bears a luxuriant bouquet of vivid indigo blue flowers above the top of the plant which is quite compact and not straggly; gives a brilliant effect in bed or border and is good for cutting if the ends of stems are slightly charred in a flame as soon as cut..... Pkt. 25c

# Antirrhinum

Or Snapdragon

Annual. 1 to 3 ft. Antirrhinums are now receiving the attention they deserve. Undoubtedly they are one of the best cut flowers which can readily be grown from seed, while for beds or borders they are a constant source of pleasure, being in flower all the time. Would call special attention to "Cherry Ripe" and "Primrose Monarch."

## New Tall Giant Flowering Sorts.

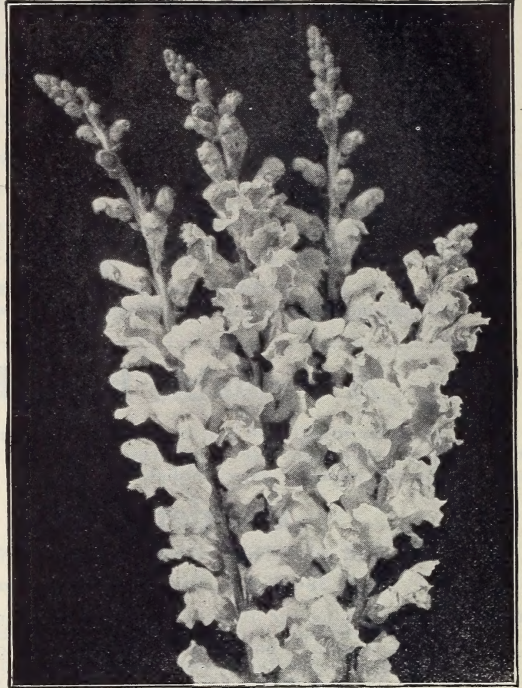
Apple Blossom, rosy pink, yellow lip.....	Pkt. 15c
Defiance, brilliant cinnabar scarlet.....	15c
Golden Queen, deep yellow.....	15c
Rose and Ruby, dark red.....	Each 15c
Purple King and Snowflake, pure white.....	Each 15c
Mixed. Tall Giant varieties.....	15c

## Tall Large Flowering Sorts.

Brilliant Rose, very fine.....	10c
Cardinal, new brilliant scarlet, very beautiful.....	10c
Golden King.....	10c
Othello, rich, dark maroon.....	10c
Rose Queen, rich rose.....	10c
Queen Victoria, white.....	10c
Mixture of Tall varieties, ½ oz., 20c.....	10c

## Semi-Dwarf Giant Flowering

Brilliant Rose, very fine.....	Pkt. 10c
Cherry Ripe, a distinct new shade, rich terra-cotta red, deeply suffused with cerise, very compact grower; will prove of highly decorative effect either for the border, for bedding or as a cut flower.....	25c
Crimson Queen. Rich velvety crimson.....	10c
Golden Queen, clear yellow.....	10c
Primrose Monarch. New. Clear primrose yellow deepening towards the center. Grows a number of spikes which bloom at the same time; a very showy bedding variety.....	25c
Rose Shades.....	10c
Silver Pink, pearly pink self.....	10c
The Bride, pure white, excellent.....	10c
Mixture of Semi-Dwarf varieties, ½ oz., 20c.....	10c



Antirrhinum or Snapdragon

## Amaranthus

Annual. Gay colored foliage is the chief recommendation of this plant. Some varieties are used for borders, while others are tall enough to serve as backgrounds or centers of beds.

Caudatus (Love-Lies-Bleeding). 3 ft. Dark red, drooping spikes, ¼ oz. 15c.....	Pkt. 10c
Tri-Colors (Joseph's Coat). Foliage crimson, yellow and bronze, ¼ oz. 15c.....	Pkt. 10c
Fine Mixed. Above and others, ¼ oz. 15c.....	Pkt. 10c

## The New "Majestic" Semi-Tall Snapdragons

These giant-flowering semi-tall Snapdragons bring us flowers as large as those represented in the Giants offered above. The plants, however, are not as tall, and are therefore better suited for borders and beds. They form well rounded, symmetrical bushes which bloom profusely from July until August, bearing an abundance of stocky flower-spikes 2 feet tall.

Majestic "Delight." The flowers are salmon-pink shading to apricot, with a golden yellow center. A most fascinating shade. Blooms of enormous size, plants of compact growth, and very free blooming.....	Pkt. 20c
Majestic "Golden Dawn." A distinct color, golden buff overlaid salmon, a magnificent snap.....	Pkt. 35c
Majestic "Orange King." A specially fine variety forming beautiful symmetrical plants covered with a profusion of blooms. The flowers are a lovely blend of rich terra-cotta shades merging into pure deep orange at the base, with a contrasting yellow lip.....	Pkt. 20c
Majestic "Red Chief." A rich deep scarlet, a splendid dense spike.....	Pkt. 35c
Majestic "Sunset." The color of Majestic Sunset is a trifle lighter than that of Orange King. It shades from bright terra-cotta into a lovely salmon color. Viewed from the distance the general color effect is rich salmon-red. Excellent for bedding and borders because of its compact habit and charming color.....	Pkt. 20c
Majestic "Twilight." A gem in every way. The color is a delicate apricot with a gold center and salmon shadings. The general color effect is rosy salmon. It exhibits the wonderful characteristics of the Majestic type; namely, giant blooms, compact habit, and sturdy growth.....	Pkt. 20c

## Aquilegia or Columbine

Perennial. 2 to 3 ft. With foliage like a maiden hair fern and flowers of pure white, blue, rose, yellow and purple, this lovely flower seems to satisfy every requirement for adorning the garden or decorating the home. For planting in permanent borders or edges of shrubbery this old favorite is one of the best.

Long-spurred Hybrids, Mrs. Scott Elliot's Strain. A wonderful mixture containing all the beautiful tints and tones and color combinations for which this strain is famous, hardly two being exactly alike, extra long spurs.....	Pkt. 25c
Long-spurred Hybrids. Blue shades.....	Pkt. 20c
Long-spurred Hybrids. Orange and scarlet shades.....	20c
Long-spurred Hybrids. Pink shades.....	20c
Long-spurred Hybrids. Magnificent hybrids in the greatest variety of colors and shades.....	Pkt. 15c
Coerulea. (Rocky Mountain Columbine.) Sepals deep blue, petals white.....	10c
Coerulea. Rose Queen.....	25c
Coerulea Copper Queen. This late addition to the long-spurred section of Aquilegia has broad petals of a decided copper-red, the spurs of a still darker shade, while the corolla is straw-color, changing to white.....	25c
Coerulea Hybrida. These hybrids bear large, beautiful flowers in various colors.....	10c
Single, Mixed, ¼ oz., 20c.....	10c
Double, Mixed, ¼ oz., 20c.....	10c

## Arctotis (African Daisy)

Grandis. A remarkably handsome annual from Southwest Africa. It forms much-branched bushes 2 to 3 feet high; its flowers are large and showy, being pure white on the upper surface the reverse of petals pale lilac-blue.....



## Barnard's Prize Asters

Many of the Asters that were awarded prizes at the recent Chicago Flower Shows were grown from Barnard's Seeds.

### "New" Single Giants of California

#### A Type of Aster Very Popular in Europe

With the introduction of these new Giants the interest in Single Asters has again been greatly stimulated. The flowers are indeed magnificent. Grown where Asters do well, the blooms will measure fully four inches in diameter. They may be described as Giant Single Ostrich-Plume Asters, borne on plants 2 to 3 feet tall and make a glorious display in the garden. They are particularly valuable for cutting.

White, Rose, Light Blue, Purple and Flesh, each..... Pkt. 25c

Mixed. This is the mixture of all the above colors and a few other shades, which give added brilliance to a display of this type..... Pkt. 25c

### New Double Asters

**Aurora.** New. An innovation and quite different from any other Aster. The center of the flower is bright yellow with an outer circle of delicate blue; makes a robust plant about two feet high..... Pkt. 25c

**Peerless Yellow.** New. At last we have a good yellow Aster; the flowers are large and of good form; the color is a deep yellow when first opened and gets lighter with age; is of the branching habit and grows about two feet. .... Pkt. 25c

### Early Asters

**Queen of the Market.** 1½ ft. Earliest of all. Light Blue, Dark Blue, Pink, White, Lavender, Crimson, Rose, Purple and Mixed..... Each, Pkt. 10c; 3 Pkts. 25c

**Early Wonder or Extra Early Express.** The earliest of the Comet type. White, Carmine Rose, Rose, Lavender, Light Blue, Dark Blue and Mixed..... Each, Pkt. 10c; 3 Pkts. 25c

### Midseason Asters

**Day Break.** 1½ ft. Erect and robust habit. The flowers are a lovely sea-shell pink..... Pkt. 10c

**Purity.** 1½ ft. Midseason. Erect and robust habit. In every respect the counterpart of "Daybreak" except in color which is a beautiful glistening white..... Pkt. 10c

**Heart of France.** 2 ft. The best red Aster. The petals are of a velvety texture and a warm-glowing color which is retained to the end..... Pkt. 15c

**Ostrich Plume.** Coppery Brown. A wonderful and delicate rare color, especially valuable for cutting and fine for exhibition purposes..... Pkt. 25c

**Giant Comet.** 2 ft. Upright habit. Flower-petals longer and broader than the original Comet type. Good bedder and fine for cutting. Pure White, Light Pink, Light Blue, Dark Blue, Lavender, Deep Rose, Carmine, Crimson and Mixed..... Each, Pkt. 10c; 3 Pkts. 25c

**Giant Crego.** 2½ ft. August. Highly developed type of the Comet Aster. Immense flowers. 5 to 6 in. across. Very popular in the home garden. Light Pink, Dark Pink, White, Purple, Crimson, Lavender and Mixed..... Each, Pkt. 10c; 3 Pkts. 25c

**Royal.** 2 ft. Vigorous, productive and beautiful. Flower stems close to the ground, giving their full strength to the production of many fine flowers which are shell-shaped. One of the best all around Asters. Pink, Rose, Lavender, Purple, White and Mixed. .... Each, Pkt. 10c; 3 Pkts. 25c



California Giant

### California Giant Asters

A splendid new midseason to late flowering strain, the result of years of painstaking selection by one of California's leading hybridizers; plants grow 3 to 3½ feet high with long, strong stems 18 to 24 inches in length bearing beautifully formed curled and interlaced flowers 5 inches and over across. One of the finest Asters for exhibition purposes.

Light Blue, Deep Rose, White, Light Purple, Dark Purple, Peach Blossom and Mixed..... Each, Pkt. 15c

**Vick's or American Branching.** 2½ to 3 ft. August and September till frost. Branching, robust habit. Flowers uniformly large and double, on long, graceful stems, which are often 15 to 20 inches in length. White, Pink, Rose, Crimson, Lavender, Purple and Mixed..... Each, Pkt. 10c; 3 Pkts. 25c

**American Beauty Asters.** The finest of all Asters. Plants 2 to 3 feet high, branching type. Commence to bloom in early September. Flowers are extremely large and are borne on 1½- to 2-foot stems. They ship well and last a long time in water.

Carmine Rose, the original American Beauty; Crimson, Azure Blue, Bright Rose, Peach Blossom, Lavender, Purple, September Beauty, flesh-pink; White Beauty and Finest Mixed..... Each, Per ½ oz., 40c; Pkt. 15c

**Giant Hohenzollern.** A late branching Aster of the Comet type. Immense flowers with beautifully broad wavy petals. Fine for cut flowers, mixture of all colors..... Pkt. 15c

### The Sunshine

#### Improved Anemone-Flowered Asters

The plants are sturdy and strong, throwing up long flower stalks, making wonderful cut flowers. Some of the flowers have twisted petals and some have quilted petals; all have a cushion center of tiny quills of a contrasting color which makes a flower look as if it was covered with snowflakes; fine for exhibiting.

White, Dark Blue, Light Blue, Pink, Dark Rose and Mixed..... Each, Pkt. 15c

### Asters

#### Barnard's Exclusive Mixture

This "Mixture" is made up especially for those who wish to grow an assortment of Asters. It includes the cream of the best varieties; Early, Midseason and Late Flowering; also many varieties not in our list.

½ oz., 50c; Per Pkt. 25c

## Balsam

(Lady Slipper, or Touch-Me-Not.) Annual. 2 ft. Balsams need rich soil, hot sun, and plenty of water. Sow the seed half an inch deep in window boxes or hotbeds early, or in the open air in May, and transplant when two or three inches in height.

**Double Camellia—Flowered Varieties.** Scarlet, Crimson, White, Yellow, Pink or Mixed.....

Each Per Pkt. 10c

**Rose-Flowered**, finest mixed..... Pkt. 10c

### Balsam Apple and Pear

Annual. 10 ft. Very curious climbing vine, with ornamental foliage, fruit golden yellow, warty, and when ripe, opens, showing the seed and its brilliant carmine interior.

**Balsam Pear.** (*Momordica Charantia.*) Pear-shaped fruit; the fruits are long and used medicinally..... Pkt. 10c

**Balsam Apple.** (*Momordica Balsamina.*) Round apple-shaped fruit..... Pkt. 10c

### Balloon Vine (Love-in-a-Puff)

A rapid-growing annual climber; succeeds best in light soil and warm situation; flowers white; seed vessels look like miniature balloons and are of great interest to children..... Pkt. 10c

## Begonias

### Everblooming Bedding Varieties

Begonias take rank as bedding plants with Geraniums and Coleus; seed should be started either indoors or in a hotbed. The seed is very fine and should be pressed in the soil without covering.

**Gracilis Luminosa.** Satiny bronzy foliage. Bright scarlet flowers..... 20c

**Prima Donna.** Rose-colored flowers..... 20c

**Begonias.** Tuberous. Rooted—See bulbs.

### Bellis (English Daisy)

A favorite plant, which will stand the winter if given the protection of a few leaves or litter.

**Monstrosa.** Pink, Red, White or Mixed..... 15c

**Longfellow.** Large, Dark Pink..... 15c

**Snowball.** Fine White. Very double..... 10c

**Double Mixed.** All colors..... 10c

### Boltonia (False Chamomile)

One of the showiest of our hardy perennials, growing 4 to 6 feet high; covered with daisy-like flowers, July to September.

**Asteroides.** White..... 10c

**Latisquama.** Lilac pink..... 10c

### Brachycome (Swan River Daisy)

Free-flowering, dwarf-growing plants, covered during the greater part of the summer with a profusion of pretty, Cineraria-like flowers. Half-hardy annual.

**Mixed.** Light blue and white..... 10c

## Calliopsis

Annual. Showy and beautiful free-flowering of the easiest culture doing well in any sunny position, blooming all summer, and excellent for cutting and massing. It is best to sow them where they are to bloom.

**Crimson King.** A fine dwarf sort 9 in. high; color rich velvety crimson-garnet..... ¼ oz., 30c; Pkt. 10c

**Marmorata.** A very showy sort, growing 2 ft. high and covered with bright golden-yellow flowers, marbled with Wallflower-red..... ¼ oz., 25c; Pkt. 10c

**Golden Wave.** Rich golden-yellow with small chestnut brown centre; very free; 12 inches..... ¼ oz., 25c; Pkt. 10c

**Finest Mixed.** Very showy..... ¼ oz., 20c; Pkt. 10c

## Perennial Calliopsis or Coreopsis

**Lanceolata Grandiflora.** This is one of the finest of hardy plants, with large, showy, bright yellow flowers produced in the greatest abundance from June till frost. Easily grown from seed, flowering the first year if sown early..... Pkt. 10c

**Lanceolata Grandiflora Fl. Pl.** Coreopsis Lanceolata has for a long time been a gem in the perennial border. This new double and semi-double form is just as easy to grow and the extra petalage adds a further charm to the flower. Will bloom first season if seed is sown early..... Pkt. 15c



Calendula Campfire

## Calendula (Pot Marigold)

Annual. 2 ft. This is the "Marygold" of Shakespeare's time; one of the best and showiest free-flowering hardy annuals.

**Radio.** New. This is a distinct break in Calendulas; the petals being beautifully quilled, forming a globular shaped flower that does not show the center until an advanced stage. Color is a deep orange..... Pkt. 25c

**Campfire.** A very appropriate name for this grand, new Calendula; color is a golden yellow with a crimson sheen which enhances the beauty of the flower, especially under artificial light; the flower is very large and extremely double with an extra long stem..... 25c

**Ball's Orange.** A glowing, fully double orange..... 25c

**Ball's Gold.** An extra long stemmed, deep golden yellow..... 25c

**Orange King,** glowing orange..... 10c

**Lemon Queen,** a rich lemon-yellow..... 10c

**Nankeen,** creamy yellow, flushed apricot..... 10c

**Mixed,** all sorts..... ¼ oz., 15c; 10c

## Campanula (Canterbury Bell)

Biennial. The seeds should be sown about April, in finely prepared, rich soil. By July the little plants should be transplanted, either to the places where they are to bloom the following Summer, or else they may be set out temporarily in rows about a foot apart, the plants eight inches apart, and finally transplanted early in October.

**Medium, Biennial.** 2 ft. These will bloom the first year from seed if sown early.

Single		Double	
Blue, fine shade..... Pkt. 10c	Blue, fine shade..... Pkt. 10c	White, pure..... 10c	White, pure..... 10c
White, pure..... 10c	Rosea, rose pink..... 10c	Rosea, rose pink..... 10c	Rosea, rose pink..... 10c
Single mixed..... 10c	Double mixed..... 10c		

**Calycanthema.** (Cup and Saucer Canterbury Bells.) Blue, White, Rose, or Mixed..... Pkt. 10c

**Crataegus.** (Harebell.) Perennial. 8 in. A picture in the fern-bed or rockery. Blue or White, each..... Pkt. 10c

## Candytuft

The candytufts are among our best hardy annuals for edgings, bedding, massing or rockeries, and for cutting.

- Giant Hyacinth-flowered.** A wonderfully improved strain, forming much branched plants about 18 inches high, each branch terminated by an immense spike of very large individual pure white flowers. Makes a very effective white bed or border, and is invaluable for cutting..... **Pkt. 10c**
- Carmine.** Glowing carmine rose..... 10c
- Crimson.** Rich, dark crimson..... 10c
- Empress.** White, large flowers..... 10c
- Flesh Pink** ..... 10c
- Lilac.** A beautiful shade of lilac..... 10c
- Queen of Italy.** Dwarf erect, pink..... 10c
- Rose Cardinal.** Brilliant deep rosy-red; one of the most effective for bedding..... 10c
- Annual Sorts Mixed.** ¼ oz. 15c..... 10c

### PERENNIAL CANDYTUFT

- Gibraltarica.** Blush white..... 10c
- Sempervirens.** Pure white, evergreen..... 15c

## Cardinal Climber

Annual. 15 ft. Rapid grower with branching habit; flowers all summer, cardinal-red clusters with beautiful fern-like foliage..... **Pkt. 10c**

## Carnation

Seeds of the Marguerite and Chabaud types sown in the spring will, by August, produce plants that will be full of bloom until frost.

- Marguerite.** With slight protection they will survive an ordinary winter and bloom freely the following spring.
- White, Scarlet, Pink and Mixed, each**..... **Pkt. 10c**
- Giant Marguerite Mixed.** An improved strain with double flowers of extra large size in a splendid range of colors..... 10c
- Chabaud's Giant Perpetual.** Blooms in five months after sowing..... 15c
- Red Grenadin** ..... 15c
- White Grenadin** ..... 15c
- Barnard's Carnation Mixture.** Contains seeds which bloom first season after sowing. Very interesting and fine for cutting..... 10c

## Castor Bean (Ricinus)

Annual. Decorative plants with palm-like foliage. Desirable to place in center of beds of Cannas for screening unsightly objects, etc. Do not sow the seed until the ground has got warm.

- Cambogensis.** 6 ft. Dark maroon, oz., 20c..... 10c
- Zanzibarensis Enormis.** Oz., 20c..... 10c
- Zanzibarensis.** 10 ft. Leaves vary in color from light green to purplish red. The plants of this variety surpass all others in height besides having enormous leaves. The seeds are beautifully marked. oz., 20c ..... 10c
- Gibsonii.** 6 ft. Dark leaves; dwarf, oz., 20c..... 10c
- Ricinus.** Finest mixed, oz., 20c..... 10c

## Centaurea

Annual. Under this name is included such popular annuals as the Cornflowers, Sweet Sultans, etc. They are favorite in all sections of the country, are perfectly hardy, will grow and do well almost anywhere, and are much in demand as cut flowers.

- Cyanus (Corn-flower, Bachelor's Button.)** Annual. 2 ft. Sow early in the Spring in the beds where they are to bloom. Thrives well in poor soil.
- Double Blue, Pink, White, each**..... 10c
- Double Mixed** ..... 10c
- Single White, Pink, Blue, each**..... 10c
- Single Mixed** ..... 10c
- Imperialis (Sweet Sultan).** Annual. 1 to 2 ft. The sweet-scented artistic-shaped flowers are borne on long, strong stems, and when cut will stand for several days in good condition. It is best to sow very early in the Spring.
- Amaranth Red, White, Rose, Lavender, Purple, each** ..... 10c
- Imperialis.** Mixed colors..... **Pkt. 10c**

## Celosia-Cockscomb

**Half Hardy Annuals.** With handsome foliage and gorgeously colored flower-heads. For largest and finest flowers, start seed indoors in March.

**Plumed Cockscombs.** Tall with large, pyramidal, feathered or plumed heads.

**"Fiery Feather."** New. A dwarf compact growing Celosia, covered from the ground up with fiery scarlet plumes. Grows about a foot high, will make a very attractive bed..... **Pkt. 25c**

**"Golden Feather."** New. Same habit as "Fiery Feather" but plumes are a golden shade. Combined they will make a most gorgeous display ..... **Pkt. 25c**

**Pride of Castle Gould.** This forms pyramidal, branching plants, bearing large, conical, plumed heads in various colors. The finest and most decorative strain to be had. Mixed ..... **Pkt. 20c**

**Thompsoni Magnifica.** An exceptionally fine strain, both for bedding and cut flowers. The colors vary, running from light yellow to dark blood-red. Mixed ..... **Pkt. 10c**

**Celosia Childsii (Chinese Woolflower).** Plants grow 2 to 3 ft. high. Scores of branches are thrown out, each bearing a ball of colored wool.

**Crimson, Pink and Yellow, each**..... **Pkt. 10c**

**Crested Cockscombs.** Curiously shaped flower-heads resembling a rooster's comb. Height, 10 in.

**Pres. Thiers or Glasgow Prize.** Dark leaves, crimson combs ..... **Pkt. 10c**

**Tall Cockscomb, mixed** ..... **Pkt. 10c**

**Dwarf Cockscomb, mixed** ..... **Pkt. 10c**

## Chrysanthemum

Annual varieties. The hardy annuals are summer-flowering border plants, and quite distinct from the hardy perennial varieties.

**Bridal Robe.** The plants grow about 12 inches high, snow-white double flowers. Valuable for cutting ..... **Pkt. 10c**

**Burridgeanum.** Pure white single flowers with zone of rich brownish red and yellow..... 10c

**Northern Star.** Pure white, single flowers with canary-yellow zone around a dark brown eye..... 10c

**The Sultan.** Crimson maroon, single..... 10c

**Eclipse.** Large single flowers. The ray florets range from pure golden yellow to nearly white, are often ringed or centered purplish scarlet and always have a dark brown disc..... **Pkt. 10c**

**Evening Star.** (Single.) A splendid variety for cutting, flowers 2 inches across, of pure golden-yellow ..... **Pkt. 10c**

**Annual Double Mixed.** Yellow, white, etc..... 10c

**Annual Single Mixed.** (Painted Daisies.)..... 10c

## Shasta Daisies (Chrysanthemum Leucanthemum)

**Shasta Daisy.** Hardy Perennial of bushy growth, bearing all summer a profusion of immense white flowers on long stems..... **Pkt. 10c**

**King Edward VII.** Perennial. Very large, white, much larger than Shasta Daisy..... **Pkt. 10c**

## Chinese Lantern Plant (Physalis)

**Francheti.** Perennial. 2 ft. Treated as an annual. this plant will form fruits the first season..... **Pkt. 10c**

## Clarkia

Annual. 1 ft. Prefers partial shade. The blossoms are extremely dainty and the plant is well worth a trial.

Single, mixed; Double, mixed..... **Each Pkt. 10c**

## Cleome (Giant Spider Flower)

Annual. 3½ ft. Branches freely, each branch carrying a head of crimson flowers. The stamens somewhat resemble spider's legs. Sow seed where plants are to bloom ..... **Pkt. 10c**

## Cosmos

Beautiful summer and autumn-blooming plants.

Early Crimson.....	Pkt. 10c
Pink.....	10c
Pure White.....	10c
Early Mixed.....	10c
Early Double "Peachblossom." Deep rose-pink.....	25c
Early Double Mixed.....	25c
<b>Anemone-Flowered or Crested Cosmos.</b> We consider this one of the best flower novelties of recent years. The colors are similar to those of the old type.	
White Queen, pure white.....	Pkt. 15c
Pink Beauty, soft pink.....	15c
Crimson King, dark crimson.....	15c
Double Crested, mixed colors.....	15c

## Giant Flowered Cosmos

Lady Lenox, Pink.....	Pkt. 10c
Lady Lenox, White.....	10c
Lady Lenox, Pink and White, mixed.....	10c
Giant Red, White and Pink.....	Each 10c
Giant Mixed.....	10c

## Cobaea Vine (Cup and Saucer Vine or Cathedral Bells)

Annual. One of the most rapid growing of the climbers.

Scandens. Large, bell-shaped purple flowers.....	10c
Scandens Alba. Pure white.....	10c

## Cynoglossum (Chinese Forget-Me-Not)

**Amabile.** A lovely plant 18 to 24 inches tall with flowers of a true Forget-Me-Not blue. It is a hardy annual of recent introduction from China, will thrive in warm weather better than the ordinary Forget-Me-Not. Is ideal for bedding as well as for cut flowers..... 10c

## Cypress Vine (Ipomoea Quamoclit)

One of the most popular vines, with very delicate, fern-like foliage, and masses of beautiful, small, star-shaped flowers. Sow in May, first soaking the seeds in warm water for a few hours; 15 feet.

Scarlet, White, and Mixed, each..... 10c

## Dahlia

Dahlias are easily grown from seed and bloom the first season. The earlier they are started the better.

**Directions for sowing Dahlia Seed**—Start seed in March. Fill a shallow box with 3 inches of the following mixture: one-third each of sand, granulated mull and good garden soil, sprinkle the seed thinly over the soil and cover very lightly with about enough soil to hide the seed; place the box in a warm place, in the window, hot-bed or greenhouse, and shade from the hot sun; see that the soil is never permitted to become dry, but avoid over-watering. Some of the seeds may come up in a few days, while others may take months, so don't be impatient. Transplant the earlier seedlings carefully, lift them out with a flat pointed stick into another shallow box, or better, into 3-inch pots; do this as the seedlings make a pair of character leaves and plant out into permanent quarters after all danger of frost is past.

**Coltness Hybrids.** These are of recent introduction and have proven a novelty of great merit; they form bushy little plants about 18 inches high which produce brilliant colored single flowers in great profusion the first year from seed; continue in flower from July until frost, and we predict it will become a great favorite when better known. It makes an excellent cut flower. Pkt. 25c

**Double Large Flowering.** This mixture is composed of the finest large flowering double varieties, which, for size of flower, excellence of color and habit, cannot be surpassed..... Pkt. 10c

**Cactus Varieties.** Popular at the present time; distinct and elegant, petals pointed..... Pkt. 15c

Single, Mixed, from fine varieties..... Pkt. 10c

## Didiscus Coeruleus (Blue Lace Flower)

This pretty and interesting annual blooms most profusely from July till November; their exquisite pale lavender blossoms are excellent for cutting; plants grow about 18 inches high. Sow where plants are to bloom..... Pkt. 10c



Delphinium Hybridum "Blue Bird" Strain

## Delphinium (Hardy Perennial Larkspur)

One of the finest hardy Perennials. Very effective in beds, masses or borders. To prolong the season of bloom, cut the old flower stems off after they have faded and new shoots will produce flower spikes successively.

**Superb "Blue Bird" Strain.** Is procured by us direct from the grower of a very fine collection of acclimated varieties. The blossoms are of immense size, single, semi-double and double. The colors range from white and lavender, through every shade of blue from azure to indigo and purple; shades of pink and blue, being blended in some of the varieties. The plants grow from 4 to 6 feet in height and are very desirable and valuable in the garden during the spring and early summer. These improved hybrids should be planted in groups dotted here and there at intervals in the herbaceous border. Mixed Pkt. 50c

**Blackmore and Langdon's Strain.** English grown. Famous the world over..... Pkt. 50c

**Wrexham Strain, "The Hollyhock."** Has long stems and very large flowers..... Pkt. 50c

### HEWITT'S NEW ENGLISH DELPHINIUMS.

**Wrexham Coquette.** Violet shaded to deep blue; height, 5 to 6 ft..... Pkt. \$1.00

**Wrexham Queen Mauve.** Charming silvery mauve—height, 5 to 6 ft..... Pkt. \$1.00

**Kelway Hybrids,** exceptionally fine..... Pkt. 25c

**Gold Medal Hybrids.** These Hybrids produce splendid spikes of very large flowers, single, semi-double, and double. Flower spikes are from 3 to 5 ft. in length. Colors range through all tints and shades of blue and lavender..... Pkt. 15c

**Belladonna.** (Ever-blooming Hardy Larkspur.) Clear, turquoise blue; not equalled for delicacy and beauty by any other..... Pkt. 15c

**Bellamosum.** Fine dark blue form of Belladonna..... Pkt. 15c

**Formosum.** 3 ft. Dark blue..... Pkt. 15c

**Chinese Delphinium.** 2 ft., admired for their handsome feathery foliage as well as their flowers. Plants branch freely.

Blue, White or Mixed..... Each, Pkt. 10c

## Dianthus or Pinks

They are hardy biennials that bloom finely the first season, remaining green all winter and blooming the next year also, if lightly protected.

### Double Annual Pinks

- Chinensis Fl. Pl. (China or Indian Pink).** Flowers very double and of many bright colors..... **10c**
- Heddewigi Fl. Pl. (Double Japan Pink.)** Double mixed. Colors varying from the richest velvety crimson to the most delicate rose..... **10c**
- Diadematus Fl. Pl. (Double Diadem Pink.)** Beautiful double flowers; mixed, of various tints of lilac, crimson, purple, to very dark purple, with the outer edges fringed and nearly white..... **10c**
- Double Annual Pinks.** All colors, mixed.....  $\frac{1}{4}$  oz., **30c**; Pkt. **10c**

### Single Annual Pinks

All of the Single Annual Pinks have large flowers 2 to 3 inches in diameter; their many and brilliant colors make them very desirable for beds and borders. 1 foot.

- Laciniatus. (Japan Pink.)** Single, fringed flowers of all colors..... **Pkt. 10c**
- Heddewigi.** Unusually large and brilliant; often oddly edged, striped and fringed..... **Pkt. 10c**
- Crimson Belle.** Flowers large and handsome, dark red, on long, stiff stems, single..... **10c**
- Eastern Queen.** Rose-colored flowers, 2 to 4 inches across; finely striped and stained..... **10c**
- The Bride (Little Gem).** White, with purple center..... **10c**
- Single Annual Pinks.** Mixed colors. These will of themselves give you a flower garden to be proud of.  $\frac{1}{4}$  oz., **25c**..... **Pkt. 10c**

## Barnard's "Brilliant" Mixture of Double and Single Pinks

This splendid mixture contains the cream of the Dianthus family. White and dark crimson selves, also white tipped light purple and shades of red with darker blotchings. A mixture of double and single pinks unsurpassed in variety of brilliant coloring and marking; desirable for cutting.

Unexpected results may be obtained by planting a bed or border of the beautiful pinks that are good for two seasons. We cannot recommend this mixture too highly.  $\frac{1}{4}$  oz., **30c**..... **Pkt. 10c**

### SCOTCH, GRASS OR SPICE PINKS

- Allwoodii.** A new race of perpetual-flowering hardy garden Pinks—the seed will produce an average of 75 per cent double, deliciously clove-scented flowers in many colors. They are perfectly hardy, and flower continuously from spring until late in the autumn. Splendid for cutting..... **Pkt. 35c**
- Plumarius Semperflorens (Everblooming Hardy Garden Pinks).** Very beautiful, sweet-scented, double, semi-double and single flowers in great diversity of color..... **10c**
- Plumarius (Grass Pinks, Scotch Pinks, or Pheasant-eye Pink).** A beautiful single hardy Pink, with fringed edged flowers of various colors..... **10c**

### Dimorphotheca (African Golden Daisy)

12 to 15 in. Hardy annual from Africa, invaluable for bedding in sunny situations.

- Aurantiaca.** Flowers glossy, rich orange gold with dark center, surrounded by black zone. This is the parent variety..... **Pkt. 10c**
- Aurantiaca Hybrids.** Similar in habit to the parent. The flowers range in color from purest white through yellow and orange to rich salmon, being zoned with the same color around the center..... **Pkt. 15c**

### Dolichos (Hyacinth Bean)

Rapid-growing Annual climber with pretty foliage and bean-like flowers.

- Purple, White and Mixed, each**..... **Pkt. 10c**

### Euphorbia (Snow-on-the-Mountain)

Strong-growing annuals, suitable for beds of tall-growing plants, or mixed borders.

- Variiegata. (Snow-on-the-Mountain.)** 2 ft. Strong-growing foliage plant whose attraction lies in the white borders to the bright green leaves. Is most showy in poor soil..... **Pkt. 10c**



## Eschscholtzia (California Poppy)

This beautiful and brilliant annual has been greatly improved in recent years, and we now have many beautiful and unusual colors.

- Golden West.** Large yellow flowers..... **Pkt. 10c**
- Mandarin.** Orange within; scarlet outside..... **10c**
- Dainty Queen.** Coral pink..... **10c**
- Lovely.** A lovely tone of bright rose pink suffused with salmon, the blooms having a satiny appearance which adds very much to the effect..... **Pkt. 10c**
- Mauve Beauty.** A delicate new color previously unknown among Eschscholtzias, it being a beautiful shade of pure mauve..... **Pkt. 10c**
- Ballet Girl.** Outside of petals intense cochineal carmine, inside of petals creamy white, beautifully frilled and fluted..... **Pkt. 10c**
- Single Mixed.** Containing many kinds not listed above, is very showy..... **Pkt. 10c**
- Double Mixed**..... **Pkt. 10c**
- Bush Eschscholtzia (Hunnemannia).** Buttercup yellow, flowers from July until frost. Beautiful feathery foliage. Grows bushy, about 2 ft. high..... **Pkt. 10c**

## Everlasting Flowers (Strawflowers)

There is a growing demand for these for use in winter bouquets.

- Accroclinium.** Mixed colors, 12 to 15 in..... **Pkt. 10c**
- Gomphrena.** See Globe Amaranth; 1 to 2 ft..... **10c**
- Helichrysum.** The most prized, 2 ft..... **10c**
- Rhodanthe.** Mixed. Dainty, 1 ft..... **10c**
- Xeranthemum.** 3 ft..... **10c**
- Everlasting.** All kinds mixed..... **10c**

## Foxglove or Digitalis

Stately, old-fashioned border plants, affording dense spikes of large, brilliantly colored flowers. It is often used as a background, and does especially well in cool, shady locations in front of shrubbery. Hardy Biennial.

- Giant Shirley.** Gorgeous plants attain a height of 5 to 7 feet, with spikes of bloom 4 feet in length, closely set with flowers of unusual size, ranging in color from the purest white to dark rose, handsomely spotted and blotched with crimson, maroon, and chocolate..... **Pkt. 25c**
- Purpurea.** Fine mixed. White, Purple, Rose or Mixed. Each..... **Pkt. 10c**

## Gaillardia (Blanket Flower)

### Annual Varieties

Excellent for beds, borders, or for cutting; should be sown where they are to bloom; 1½ feet.

**Picta Lorenziana.** Crimson and orange.....Pkt. 10c  
**Picta Mixed.** Single Sorts; ¼ oz., 15c.....10c

### HARDY PERENNIAL VARIETIES

There are no plants that put more life into the perennial border and content with such simple treatment.

**"Bremen."** New. The plants are covered with superb long stemmed flowers of a deep coppery scarlet with dark brown disc, the petals are slightly tipped yellow, grows 2½ feet—a very fine Perennial.....Pkt. 25c

**Tangerine.** Compact grower, large, soft orange-colored flowers resembling the color of the tangerine orange. A distinct color.....Pkt. 25c

**The Dazzler.** By far the largest and most attractive Gaillardia ever introduced. The flowers are very large, of a dark rich red with a bright orange tip on the end of each petal. They stand erect on long stiff stems, making them very attractive for table decorations .....25c

**Portola Hybrids.** Of recent introduction; the immense flowers are a brilliant rich coppery scarlet, each petal being tipped with golden yellow; the plants are of an upright habit and the flowers are held erect on long stiff stems; excellent for cutting .....25c

**Grandiflora Copper-red.** A striking new color in this popular perennial .....15c

**Kelway's Hybrids.** A reliable English strain. Beautiful flowers of large size and great brilliance in color. Invaluable for decorations because they retain their beauty a long time after being gathered .....25c

**New Hybrids.** This is a very good selection.....15c

**Grandiflora Superb Mixed**.....10c

## Globe Amaranth (Gomphrena)

Annual. 1 to 2 ft. With clover-like heads which retain their shape and color splendidly for the winter bouquet.

**Orange Globe**.....Pkt. 15c  
**Red, Pink, White and Mixed, each**.....10c

## Gourds (Ornamental)

Gourds grow in very curious shapes, and are used for house ornaments.

**Apple, Bottle, Calabash or Pipe Gourd, Dipper, Dish Cloth, Hercules Club, Nest Egg, Pear, Sugar Trough** .....Each, Pkt. 10c  
**Mixed**.....½ oz. 20c; Pkt. 10c

## Gypsophila (Baby's Breath)

Excellent for their delicate effect in bouquets.

**Elegans Grandiflora Alba.** Pure white tiny flowers, annual .....Pkt. 10c  
**Elegans Grandiflora Rosea.** Soft pink annual.....Pkt. 10c

## Helichrysum (Everlasting)

One of the best flowers to dry for house decorating. Gather before the blooms expand and hang heads downwards in cool place. Annual. 2 ft.

**White, Scarlet, Yellow, Crimson, Silver Pink (new), Rose Queen (new), Salmon, Rose, Purple and Mixed Colors**.....Each, Pkt. 10c

## Heliotrope (Cherry Pie)

A half-hardy perennial, flowering during the whole season.

**Mammoth Flowered.** Colors from almost white to deep dark purple.....Pkt. 15c



Gaillardia, The Dazzler

## Hibiscus (Marshmallow)

The colorings comprise rich dark red, soft mallow-pink and pure white; the plants grow from 5 to 6 feet high and are very floriferous, blooming from early in July until late in autumn; and are perfectly hardy.  
**Giant Red, Pink, White and Mixed**.....Each, Pkt. 10c

## Hollyhock

Biennial. 5 to 6 ft. Hollyhocks make a fine row in a garden, a fine background next to a building, or high wall or fence.

**"Imperator."** New. A most distinct departure from the ordinary Hollyhocks. The flowers are composed of a very broad collar of frilled and fringed petals of one color and a large double rosette of another color; the combinations are: scarlet with cream, yellow with pink, etc. Makes a most attractive plant, 4 to 6 ft. high. Pkt. 35c

**"Exquisite."** New. Very large flowers with beautifully curled and fringed white-margined petals each adorned with a long blotch in various shades of red .....Pkt. 25c

**Chater's Prize, Double Mixed.** Unrivaled in richness and delicacy of coloring, with magnificent spikes of very double flowers .....Pkt. 10c

**Double, White, Crimson, Salmon, Pink, Black, Yellow, Maroon, Newport Pink**.....Each, Per Pkt. 10c

**Choice Double Mixed**.....¼ oz. 20c; Pkt. 10c

**Single Varieties.** They are usually of freer growth than the doubles, and present a very handsome appearance when covered with their artistic blossoms.  
**Mixed** .....Pkt. 10c

**Mammoth Allegheny.** Double and semi-double fringed flowers ranging in color from pure white to deep red, flowers first season from seed.....Pkt. 10c

## Humulus Japonicus (Japanese Hop)

Annual. 12 ft. Excellent for screens.  
**Japonica.** Green. The most vigorous.....Pkt. 10c  
**Variegatus** Variegated foliage.....Pkt. 10c

## Kochia (Standing Cypress, or Belvedere)

**Childsii.** An easily-grown annual, which soon forms a cypress-like hedge .....10c

## Larkspurs (Annual)

Easily grown in any garden. The graceful spikes are nice for cutting. The following varieties grow 2½ to 3 feet tall and bloom all Summer.

**La France.** The large, well formed double flowers are a very pleasing shade of Salmon-pink, and are well placed upon the long stems. Is much more vigorous and taller growing than other pink shades of stock-flowered varieties on the market today, and is more resistant to mildew. We consider this one of the most important of recent introductions.....25c

**Los Angeles.** Of the same habit as La France, but with a much richer color. Is a rich salmon ground, overlaid with a brilliant rose; the foliage is also darker, which adds to its beauty. ....Pkt. 25c

**Improved Exquisite, Stock Flowered.** The habit of plant is upright like La France. The flowers are a delightful shade of salmon-pink. A wonderful cut-flower .....Pkt. 25c

**"White Spire."** New. Same upright growth as the above varieties, but with pure white double flowers .....Pkt. 25c

**Branching or Stock Flowered.**  
Bright Rose, Sky Blue, Dark Blue, Pink, White, Lustrous Carmine, Rosy Scarlet.....Each, Pkt. 10c

**Branching. Mixed**.....¼ oz. 20c; Pkt. 10c

**Emperor Brilliant Carmine.** A fine new larkspur of compact growth, about 24 inches high. Color same charming shade as the stock flowered lustrous Carmine.....Pkt. 25c

**Improved Giant Hyacinth-Flowered.** The plants grow about three feet tall and give a spike well filled with flowers; may be planted closer than the stock-flowering. Is an early flowering variety.  
Blue, Pink, Lilac, Purple, White or Mixed. Pkt. 15c

## Lobelia

Useful for edgings, vases and baskets.

**Crystal Falace Compacta.** Deep blue.....10c

**Speciosa.** Blue; trailing.....10c

**Annual—Lobelia Mixed,** ½ oz., 15c.....10c

## Lunaria or Honesty (Satin Flower)

Hardy biennials, admired for their silvery seed pouches; for house ornaments.....10c

## Lupinus (Lupine)

**Annual Varieties.** Free-flowering, easily-grown annuals. Seed may be sown where the plants are to bloom.

**Hartwegii.** White, Rose, Light Blue, Dark Blue and Mixed .....Each 10c

**Perennial Varieties.** Effective hardy perennials, succeeding in any good garden soil; blooms in May and June; 3 feet.

**Polyphyllus,** Blue, White or Rose.....Pkt. 10c

**Perennial Sorts.** Mixed.....10c

**English Hybrid Lupins.** Harkness' famous strain. Tall and stately blooms, very fragrant. Mixed colors .....Pkt. 25c

## Marvel of Peru (Four o'Clock)

Annual. 2 ft. The earliest light of summer finds the Four o'Clock plants a mass of fragrant bloom.

**Tall.** Red, Yellow, or Rose. Each, oz. 25c.....Pkt. 10c

**Tall. Mixed.** Oz. 20c.....Pkt. 10c

**Dwarf.** Mixed. Oz. 25c.....Pkt. 10c



Larkspur, La France and Los Angeles Type

## Marigold (Tagetes)

The African and French Marigolds are old favorite free-flowering annuals of easy culture.

### Double African Varieties

The African Marigolds produce very large flowers on tall stems.

**Orange Prince.** Produces densely double flowers, and of the regularity and perfection of a Dahlia. For effective garden display during the summer and autumn months nothing can surpass the gorgeous masses of color of this grand variety. 2 to 3 feet .....10c

**Lemon Queen.** A counterpart of the above but has soft, lemon yellow flowers.....Pkt. 10c

**Primrose Queen.** New. A delightful shade of creamy primrose, with a touch of gold, large quilled flowers, very fine.....Pkt. 20c

**African Double, mixed,** ¼ oz. 20c.....Pkt. 10c

### Dwarf French Marigolds

**Legion of Honor.** (Little Brownie.) Single, golden yellow, blotched, crimson.....Pkt. 10c

**Dark Brown,** rich velvety mahogany brown.....Pkt. 10c

**Dwarf Gold Striped.** Very double. Chestnut brown, striped yellow .....Pkt. 10c

**French Dwarf Double Mixed,** ¼ oz. 20c .....Pkt. 10c

**Tagetes Signata Pumila.** Is an attractive, shrubby little plant growing about 10 inches high with fern-like foliage and small clean-cut golden yellow flowers .....Pkt. 10c

### Mignonette (Reseda)

A well-known fragrant favorite, and no garden is complete without a bed of Mignonette.

- Defiance.** Grown under favorable conditions, this variety makes spikes a foot long, and the individual florets are not only very large, but delightfully fragrant. Pkt. 10c
- Gabriele.** Red flowers; desirable in gardens. Pkt. 10c
- Machet.** One of the best of the family. Of dwarf habit with very large red flowers and handsome foliage. Pkt. 10c
- Large Flowering, Mixed, oz. 20c** Pkt. 10c

### Mimosa (Sensitive Plant)

**Pudica.** Its fern-like leaves are extremely irritable, closing and dropping when touched. H. H. A. 18 inches Pkt. 10c

### Mimulus

- Moschatus.** (Musk Plant.) H. H. A. 6 in. Useful for hanging baskets. Small yellow flowers. Pkt. 15c
- Tigrinus** (Monkey Flower.) 1 ft. Large flowers of various shades of yellow, splashed and dotted with crimson Pkt. 10c

### Moonflower

Beautiful twining plants. Fine for outdoor or greenhouse culture. The seeds of most varieties are slow to germinate. They should be soaked in hot water two or three hours before planting.

- Grandiflora Alba.** (White Moonflower) Pkt. 10c
- Pink Flowered.** (Hybrid Moonflower) Pkt. 10c
- Bona Nox,** blue. (Evening Glory) Pkt. 10c

### Morning Glory or Convolvulus

A handsome showy climber of easy culture and suitable for covering arbors, windows, trellises, old stumps, etc.

- Major or Climbing Morning Glories.** Mixed, all colors. Oz. 15c Pkt. 10c
- Imperialis Japonica.** Imperial Japanese or Emperor Morning Glories. The flowers are of great size, some of them beautifully fringed and of the lovely varied colors. Mixed Pkt. 10c
- Imperialis Fimbriata.** Same as above but edges of flowers are fringed. Mixed Pkt. 10c
- Brazilian Morning Glory.** Flowers of pleasing rose-color, borne very freely in large clusters from August to frost. As a quick-growing vine it has no equal Pkt. 10c

### Myosotis (Forget-Me-Not)

Dainty little plants with graceful flowers, mostly in shades of blue. Like Pansies and Daisies, they prefer cool, moist soils.

- Alpestris.** Biennial. Trailing habit. Pkt. 10c
- Victoria.** Sky-blue flowers, dwarf, fine for pots. Pkt. 15c
- Falustris.** Perennial variety. Pkt. 15c
- Semperflorens.** All summer bloomer; dark blue flowers Pkt. 15c
- Mixed** Pkt. 10c

### Nemesia

Half-hardy annual. 12 in. Very beautiful bushy plant. Sow out of doors.

- Nana Compacta Mixed** Pkt. 10c

### Nemophila (Baby Eyes)

Hardy annual. 6 in. An excellent border or pot plant. Sow out of doors.

- Insignis Blue** Pkt. 10c

### Nicotiana (Tobacco Plant)

Annual. 2 to 3 ft. Properly used this plant is a great help in giving green and a fragrance to the midsummer garden.

- Affinis.** Flowers white, tubular. Constant bloomer. Blossoms open toward evening. Fragrant Pkt. 10c
- Affinis Hybrids.** A collection of beautiful colors Pkt. 10c

### Nigella (Love in a Mist, or Devil in the Bush)

Annual. 12 to 15 in. Of easiest culture with attractive fern-like foliage. Useful for cutting. Gives airy, light effect. Seed pods are ornamental.

- Miss Jeckyll.** Especially fine for cutting. Bright blue Pkt. 10c
- Mixed.** Blue and white Pkt. 10c



## Nasturtiums

**Tall or Climbing.** Besides their ordinary garden use for trailing over fences, trellises, stone walls, etc., these can also be grown as trailers for hanging-baskets and vases.

**King Theodore.** Dark foliage; crimson.

**Pearl.** Lemon, nearly white.

**Schillingi.** Yellow, blotched maroon.

**Sunlight.** Very large, rich golden yellow.

**Von Moltke.** Ruby Rose.

Price, any of the above, each, oz. 20c Pkt. 10c

**Barnard's "Royal Mixture" Tall Nasturtiums.** A gorgeous mixture. It contains all the new Giant Flowering kinds. A diversity of rich colors and new and striking combinations are found in this mixture Oz. 20c; 1/4 lb. 40c; 1/2 lb. 75c; 1 lb. \$1.40; Pkt. 10c

**Tall Nasturtiums.** Regular Mixture. Oz. 15c; 1/4 lb. 30c; 1/2 lb. 55c; 1 lb. \$1.00

### DWARF OR TOM THUMB NASTURTIUMS

These have a neat, compact habit and attractive foliage.

**Cloth of Gold.** Golden foliage.

**Crystal Palace Gem.** Sulphur spotted maroon.

**General Jacqueminot.** Crimson.

**Golden King.**

**King Theodore.** Velvety crimson.

**Lady Bird.** Orange yellow.

**Ruby King.** Ruby red.

**Rose.**

**Scarlet.**

**Yellow.**

Price, any of the above, each, oz. 20c Pkt. 10c

**Barnard's "Royal Mixture" Dwarf Nasturtiums.** Will give a larger variety of colors in even proportions than any other Nasturtium mixture. Oz. 20c; 1/4 lb. 45c; 1/2 lb. 75c; 1 lb. \$1.40; Pkt. 10c

**Dwarf Nasturtiums.** Regular Mixture. Oz. 15c; 1/4 lb. 35c; 1/2 lb. 60c; 1 lb. \$1.00



## Pansies

If started in the house from February until April pansies will begin to bloom from July on; sown outdoors in May beautiful flowers are produced in the fall; sown in frames during July and August and transplanted later gives us the main crop of flowers the following spring.

Take care of the weakest looking seedlings, as they usually give the finest flowers.

**Barnard's Florists' Mixture.** Our best combination of pansy seeds, and is the richest and most varied mixture possible. It produces flowers of largest size, beautiful colors, and graceful forms. A pansy bed grown from this seed will give you a grand display. It is the Best Mixture that money can buy. 3 for 50c..... Pkt. 20c

**Swiss Giant Mixture.** This wonderful new class is entirely different to any other Pansy. The beauty, brilliancy and richness of the entirely new color tones is most striking. The perfectly round flowers are held on strong stems well above the unusually vigorous plants..... Pkt. 35c

**Giant Mixture.** Made up from and including seeds of all the Giant Flowering Pansies, and several other sorts not otherwise obtainable than in this mixture. 2 for 25c; ½ oz. 75c..... Pkt. 15c

**Bedding Mixture.** A pretty strain. The flowers are smaller than those grown from our other mixtures. ½ oz. 35c..... Pkt. 10c

**Bugnot.** Large, round flowers, with shadings of colors not found in other pansies..... 15c

**Cassier.** Three to five spotted; showy..... 15c

**Masterpiece.** Petals curled and twisted. Very large flowers more or less blotched and in combinations of color. The nearest approach to a double pansy..... Pkt. 15c

**Trimardeau.** Giant Mixed; marked with three blotches on lower petals..... 15c

### Named Varieties

**Auriculiflora.** Dark and handsome..... Pkt. 15c

**Coal Black.** Black-purple, darkest of all..... 15c

**Emperor.** Navy blue; purple eye..... 15c

**Lord Beaconsfield.** Upper petals lavender, lower deep purple. A beauty..... 15c

**Madame Perret.** Lovely shades of pink and rose..... 15c

**Psyche.** Fine form and color. A fine blotched flower, entirely surrounded with white..... Pkt. 15c

**Prince Henry.** Flowers very large, intensive dark blue with black-blue blotches..... 15c

**Yellow Gem.** Clear yellow..... 15c



Type of Barnard's "Mammoth" Single

## Petunias

For outdoor decoration, porch or window boxes few plants equal the Petunia in effectiveness.

**Giants of California.** This strain is of incomparable size, luxuriance and beauty. Nearly all the flowers are ruffled or fringed, and measure from 4 to 5 inches across..... Pkt. 20c

**Barnard's "Mammoth" Single.** This mixture includes, besides the Ruffled and California Giants, all the colors of the large flowering and fringed sorts, and the unsurpassed Superbissima varieties, with their delicate veined throats in various colors and truly mammoth flowers..... Pkt. 25c

**DeLux Bedding.** Superb colors and markings. A very fine strain..... Pkt. 15c

**Rosy Morn.** The plants are bushy and compact, the medium size flowers, produced in great abundance throughout the entire summer and fall are of a most pleasing clear pink..... Pkt. 10c

**Fringed Rose Pink.** A new dwarf erect growing Petunia of the Rosy Morn type, will make a beautiful bed..... Pkt. 20c

**Howard's Star.** Crimson maroon with a clearly defined five-point star in center of flower. Fine for bedding, baskets, vases, etc..... 10c

**Rose of Heaven.** Bright rose..... 15c

**Fine Single Mixed.** ½ oz. 20c..... Pkt. 10c

### Balcony Petunias

A splendid large and free flowering type, either for window boxes, vases, hanging baskets or bedding.

**Blue, Rose, White, Crimson, Balcony Queen** (violet and white), and **Balcony Mixed**..... Each, Pkt. 15c



Type of Barnard's "Florists' Mixture"

## Phlox Drummondii

The annual Phloxes are dazzling in effect, particularly so when sown in masses or ribbon beds of contrasting colors. Few flowers are so easy to grow from seed, so pretty and compact in habit, so quick to bloom, or give such a brilliant display of color for so little cost and care.

### Select Large-Flowering Sorts

Scarlet, white eye	<b>Chamois Rose</b>
Scarlet	<b>Carmine, white eye</b>
Pure White	<b>Blood Red</b>
Rosy Carmine	<b>Pink</b>
Yellow	<b>Violet</b>
Each.....	<b>Pkt. 10c</b>

**Barnard's "Giant" Annual Phlox.** Contains all of the colors noted above as well as a great many others and makes a very showy bed or border. Has very large, perfectly round flowers, and will produce immense trusses of flowers, which will surpass every other variety in extreme richness of color and duration of bloom. It grows very compact, attaining a height of about 15 inches. Mixed, 1/8 oz. 30c.....**Pkt. 10c**

**Dwarf Phlox (Nana Compacta).** Plants of this charming section grow only 8 inches high and form dense masses of bloom all summer. They are especially useful for beds, edgings, pots, etc.

<b>Snowball</b>	<b>Blush Rose</b>
<b>Fireball, Scarlet</b>	<b>Rose</b>
Mixed, Each.....	<b>Pkt. 10c</b>

### Pennisetum (Fountain Grass)

**Longistylum.** Annual. 2 ft. Beautiful ornamental grass with drooping heads. Good for bouquets. **Pkt. 10c**

**Rueppelianum.** 3 ft. Foliage long and slender, glossy deep green in color. Silvery spikes, tinted violet, very beautiful. **Pkt. 15c**

### Physalis (Chinese Lantern Plant)

**Francheti.** An ornamental plant, forming dense bushes about 2 feet high, producing freely its bright orange-scarlet lantern-like fruits, which can be cut and dried for winter bouquets; highly interesting.....**10c**

### Platycodon (Balloon Flower, or Japanese Bellflower)

One of the best perennials, producing very showy flowers during the whole season. They form large clumps and are excellent for planting in permanent borders or among shrubbery.

<b>Grandiflorum.</b> Large blue flowers, 2 ft.....	<b>Pkt. 10c</b>
<b>Album.</b> Pure white variety, 2 ft.....	<b>10c</b>

### Portulaca (Sun Plant, Rose Moss)

Annual. 6 to 8 in. It revels in the full sun and seems not to heed a lack of moisture. For narrow borders and rockery, for the top of a retaining wall, this lovely little plant is well worth a trial. Mix the small seed with fine, dry earth or sand, to insure even sowing.

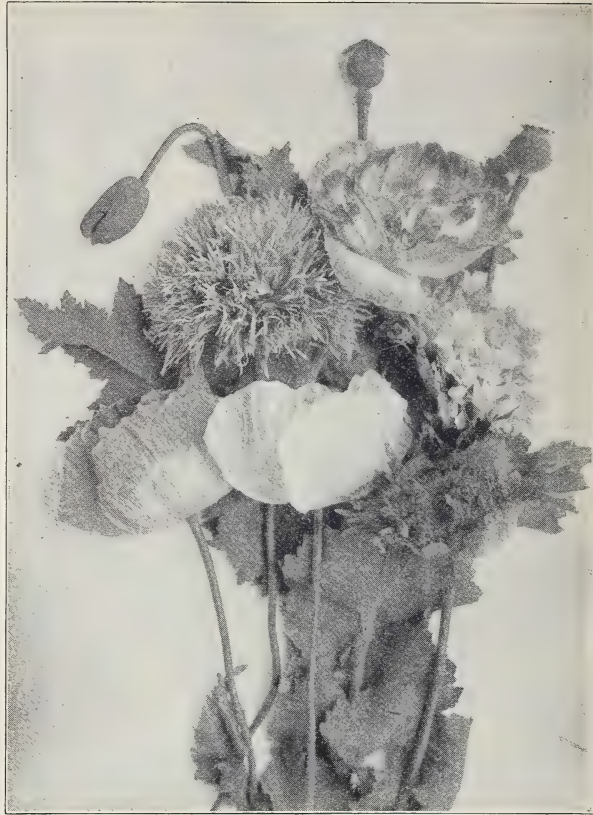
<b>Double Rose, Scarlet, White, Yellow, each.....</b>	<b>Pkt. 10c</b>
<b>Double Mixed.</b> A percentage of the flowers will come perfectly double. 1/8 oz. 35c.....	<b>Pkt. 10c</b>
<b>Single Mixed.</b> All colors. 1/4 oz. 25c.....	<b>Pkt. 10c</b>

### Pyrethrum

Showy, hardy perennials growing 2 feet in height, with most brilliant and lasting flowers, sometimes called painted daisies; luxuriates in rich sandy soil and plenty of water, especially when in bud.

**Roseum Hybridum.** This large-flowering single strain is saved from a fine collection. Bears large, Daisy-like flowers, ranging in color from light pink to deep red, with bright yellow centers. Is one of the most graceful and lasting of the cut flowers.....**Pkt. 10c**

<b>Kelway's Single Mixed.</b> Extra large, flowering, an English strain.....	<b>Pkt. 25c</b>
<b>Hybridum.</b> Double, Aster-like flowers. From pure white to crimson. Mixed.....	<b>Pkt. 20c</b>
<b>Hybridum.</b> Extra Double "Market Strain".....	<b>25c</b>



Barnard's Special Double and Single Poppies

## Poppies

Annual Poppies should be sown as early in the spring as possible where they are to remain, as they do not stand transplanting.

<b>Admiral, Single.</b> Large, smooth-edged white flowers with a broad scarlet band.....	<b>Pkt. 10c</b>
<b>King Edward.</b> Scarlet with black blotch.....	<b>10c</b>
<b>Glaucum (Tulip Poppy).</b> The flowers are 3 inches across and closely resemble the brilliant Scarlet Gesneriana Tulip.....	<b>10c</b>
<b>Single Poppies, Mixed Colors.....</b>	<b>Pkt. 10c</b>
<b>Cardinal, Red double.....</b>	<b>Pkt. 10c</b>
<b>Carnation-Flowered. Mixed Double.....</b>	<b>10c</b>
<b>Shrimp Pink. Peony flowered.....</b>	<b>10c</b>
<b>White Swan. Double white; fringed.....</b>	<b>10c</b>
<b>Double Poppies, Mixed, 1/2 oz. 15c.....</b>	<b>Pkt. 10c</b>
<b>Barnard's Special Mixture of Double and Single Poppies.</b> Comprises not only all the double and single Poppies described above but also a number of other sorts, especially purchased for this mixture, including some entirely new ones. 1/2 oz. 20c.....	<b>Pkt. 10c</b>

### Shirley Poppies

<b>American Legion.</b> Brilliant orange scarlet, each.....	<b>15c</b>
<b>Blue Shades, Rose, White.....</b>	<b>Each 10c</b>
<b>Ryburgh Hybrid Giant Flowering.....</b>	<b>15c</b>
<b>Double Shirley, Pink.....</b>	<b>10c</b>
<b>Double Shirley, Salmon.....</b>	<b>10c</b>
<b>Shirley Poppy, Mixed.....</b>	<b>10c</b>

### Iceland Poppies (Papaver Nudicaule)

While these are hardy perennials, they flower the first year from seed, blooming almost as early as the annual sorts.

<b>Yellow, White, Orange, each.....</b>	<b>Pkt. 10c</b>
<b>Mixed Iceland Poppies, 1/4 oz. 30c.....</b>	<b>Pkt. 10c</b>

## Oriental Poppies

<b>Oriental. Scarlet.....</b>	<b>Pkt. 10c</b>
<b>Oriental. Princess Victoria Louise, Salmony-rose.....</b>	<b>15c</b>
<b>Oriental Hybrids.</b> Flowers of immense size, 6 inches and over in diameter, and of many novel colors.....	<b>Pkt. 10c</b>

## Rudbeckia (Cone Flower)

There are several varieties of this rather coarse-growing, but effective plant, and each one is quite distinct from the others. It is adapted to almost any soil and situation, but richness and cultivation improves it.

- Newmani.** (Black-eyed Susan.) Showy yellow flowers ..... Pkt. 10c
- Purpurea.** (Giant Purple Cone-Flower.) A most interesting hardy perennial, producing all summer large, showy, reddish-purple flowers, about 4 inches across ..... 15c

## Salvia (Flowering Sage)

A hedge or bed of *Salvia splendens* is a blaze of color during late summer and fall. They are used to good effect for bordering Canna beds, also for hedges along walks or lot dividing lines. Seed should be started either indoors or in a hotbed; sow about ¼ in. deep; do not sow in open ground until soil has become well warmed. Transplant from 12 to 18 inches apart; all are treated as annuals.

- Splendens.** 2½ ft. The well-known variety, fiery scarlet. ½ oz. 30c..... Pkt. 10c
- "Wonder."** A new kind, produces flowers so abundantly that the foliage is almost hidden, giving the beds the appearance of a brilliant red carpet..... 25c
- Clara Bedman.** 2 ft. Dwarf and compact..... 10c
- Fireball.** 2 ft. Very compact; desirable for pots..... 15c
- Zurich.** 12 to 15 inches. Scarlet, early..... 20c
- America, or Globe of Fire.** Uniform in habit of growth, which makes it particularly valuable for bedding or planting in rows..... 15c

## Salpiglossis

Annual. 2 ft. The flowers are trumpet-shaped, beautifully veined and of the most exquisite colors; blue, violet, yellow, rose and scarlet, in all shades and tints. Unexcelled for cutting. Better sow the seed inside early in the Spring. They are very fine and should not be covered, but pressed into the soil. Keep barely moist and out of the direct rays of the sun until the young plants are well up. *Salpiglossis* prefers a sandy soil which has been fertilized.

- Azure Blue.**..... Pkt. 15c
- Rose, Dark Scarlet, and Brown,** each..... 15c
- Emperor.** An improved strain; growth is more compact, and flowers larger. Mixed..... 10c
- Mixed.** Shades and markings, ½ oz. 30c..... 10c

## Scarlet Runner Beans

**Scarlet Runners.** A great favorite in England and Europe, not only as an ornamental climber, but for the delicious edible beans which succeed the spray of bright scarlet pea-shaped blossoms. Pkt. 10c

## Sedum (Stone Crop)

Perennial. 4 inches. Showy little plants, suitable for rockwork, stone walls, edgings, etc..... 10c

## Statice

Excellent for rock-garden or border, but especially for drying, as it is used extensively by both amateurs and commercial flower-growers for winter bouquets and decorations. It lasts unusually well and gives a light and airy grace to any sort of combination. Sow inside in March and the plants will blossom by June. Sow outside again in May.

- Russian.** Pink. 1 ft. Annual..... Pkt. 10c
- Sinuata.** 2½ ft. Annual. Blue, Rose, White and Mixed, each ..... 10c
- Latifolia.** Large, spreading panicles of light-blue flowers. Perennial ..... 10c

## Stokesia (Cornflower or Stokes' Aster)

Plants grow about 18 inches high, bearing freely from July to October handsome Centaurea-like blossoms, each measuring from 4 to 5 inches across; it is of easy culture, and one of the most desirable plants for the hardy border, and also for cutting. Hardy perennial.

- Cyanea.** Mixed ..... 10c



"Shasta" Scabiosa

## Scabiosa

(Mourning Bride, Sweet Scabious, Pin-Cushion Flower, etc.)

This is an old favorite, and of late years has been greatly improved. The flowers are borne on long wiry stems, in many beautiful colors.

### LARGE-FLOWERING ANNUAL SCABIOSAS

- Azure Fairy.** Blue. If difficulty is experienced in raising the *Didiscus*, or *Blue Lace Flower*, here is a substitute that will most acceptably take its place ..... 10c
- Peach Blossom.** A beautiful shade of peach-blossom pink. The flowers are of unusual size and are borne on long stems..... 15c
- Shasta.** Mammoth pure white flowers which combine exquisitely with *Peach Blossom*..... 15c
- Snowball, Pink, Rose, Black King, Fiery Scarlet, Golden Yellow, Purple, and Mixed** of choice varieties ..... Each, Pkt. 10c

## Hardy Perennial Scabiosas

- Caucasica.** Lilac-blue. 3 ft. Especially valuable for cutting, the blooms lasting an unusually long time in water ..... Pkt. 15c
- Caucasica Alba.** A large, pure white variety; the flowers, 3 to 4 in. across on long stems..... 20c
- Isaac House Strain.** This produces wonderful new types of hardy Scabiosa..... Pkt. 50c

## Stocks (Gilliflower)

Stocks last a long time in bloom. The seed may be sown in the open ground, in the hotbed or cold-frame.

- Giant Bismarck or Imperial.** One of the best stocks for outside planting; of pyramidal form, strong and robust, gives large double flowers
- Fiery Blood Red, Dark Blue, Flesh, Lavender, Rose, White and Mixed Bismarck.** Each..... 10c
- GIANT PERFECTION OR CUT-AND-COME AGAIN**
- Light Blue, Dark Blue, Lavender, Rose, Scarlet, Light Pink, Princess Alice (White), Canary Yellow and Giant Perfection Mixed,** each..... 10c

### LARGE FLOWERING 10-WEEKS

The favorite sort for bedding. Grows about 1 ft. high.

- Rose, Light Blue, Crimson, Purple, White, Blood Red, Canary, Flesh and Mixed,** each..... Pkt. 10c

## Sweet Peas

A deep, rich, moist soil is best suited to Sweet Peas, hence a trench should be dug  $1\frac{1}{2}$  feet deep and filled with very best loam mixed with bone meal and pulverized cattle manure. The vines are usually grown in double rows, with a wire trellis or a row of brush between. For each double row make the drills about 6 inches deep, and 9 to 10 inches apart. Sow plentifully, covering about 2 inches deep, and by degrees, as the vines grow up, fill the trenches with soil, and thin out to about 3 inches apart. Spring sowings should be made just as early as the ground can be prepared, white-seeded varieties should not be sown until the ground is fairly warm. Sweet Peas should not be grown on the same soil year after year. If the location cannot be changed, the soil to a depth and width of a foot or so should be removed and replaced by soil from another part of the garden. If the soil is in good, rich condition, bone meal is the best fertilizer.

The blooms should be picked before they form pods or the plants will soon stop flowering.

For Aphis or Red Spider any of the nicotine preparations will help to keep them in subjection if vigorously applied to both sides of the leaf with a hand spray.

### Spencers "Butterfly" or "Orchid Flowered"

They are distinguished from the standard sorts by the enormous flowers with crinkled and wavy petals, and also from the fact that they usually bear four blossoms on a long, stout stem.

These varieties are especially adapted for outdoor planting

Each, per Pkt., 10c; Oz., 35c

- Austin Frederick Improved.** A very fine giant lavender.
- Barbara.** Lovely salmon. Blooms freely. Usually four flowers to a stem. Excellent exhibition flower.
- Blue Monarch.** Violet blue. Large wavy flowers. Very handsome.
- Commander Godsall.** Very large flowers of violet-blue.
- Countess Spencer.** The beautifully waved petals and soft pink color make this a never-failing favorite.
- Dobbie's Cream.** A deep primrose.
- Fiery Cross.** A scorching fiery red. No shading
- Flora Norton.** Bright blue. Large showy flowers for cutting.
- Florence Nightingale.** Soft lavender flowers of unusual size, handsomely waved and frilled.
- Helen Lewis.** Standard orange, wings pink.
- Hercules.** A choice soft rose-pink. Large flowers.
- Illuminator.** Mammoth rosy-pink. Very beautiful by artificial light.
- Jean Ireland.** Of the picotee type. Creamy buff, edged with carmine.
- King Edward VII.** Splendid crimson. Very free bloomer.
- King Mauve.** A gem. Largest waved mauve.
- King White.** No finer white, in every respect, has ever been produced.
- Margaret Atlee.** Color a delicate shade of pink. A blending of salmon and rose over a creamy ground.
- Robert Sydenham.** Splendid. Clear, glowing orange. Strong grower.
- Rosabelle.** Rose. Mammoth flower. One of the finest of this color. Blooms freely and does not sunburn.
- Royal Purple.** Most satisfactory.
- Valentine.** A very beautiful blush-pink flower.
- Warrior.** An extremely large flower, maroon, almost black
- Wedgewood.** Clear, delicate blue. A distinct shade named for the celebrated Wedgewood ware.
- Youth.** The most fragrant of all sweet peas. With an exquisite pink picotee on the large, pure-white ground.
- Above, Each, Per Oz. 35c.....Pkt. 10c

## Grandiflora Varieties

Are considered easier to grow than the Spencers. The varieties listed below are the cream of all known sorts. All inferior varieties have been discarded.

- America.** White striped scarlet.
- Black Knight.** Maroon.
- Blanche Ferry.** Pink and white.
- Dorothy Eckford.** White.
- Golden Gleam.** Cream.
- Katherine Tracy.** Soft pink.
- King Edward VII.** Scarlet.
- Lady Grisel Hamilton.** Lavender.
- Lottie Eckford.** Blue and white.
- Lord Nelson.** Blue.
- Mrs. Joseph Chamberlain.** White striped pink.
- Mrs. Wilmot.** Orange pink.
- Senator.** White striped chocolate.
- Above, Each, Oz. 10c;  $\frac{1}{4}$  lb. 35c; 1 lb. \$1.25

## Sweet Peas in Mixture

**Barnard's "Royal" Mixture of Spencers.** Made up from our complete list of named varieties, including those of recent introduction. We have been very careful in preparing this mixture so that each package will contain a proper proportion of color and seeds of the choicest varieties.

- .....Pkt. 10c; Oz. 25c;  $\frac{1}{4}$  lb. 75c; 1 lb. \$2.25
- "Silver Gilt Medal" Mixture.** This mixture is a beautiful blend of only the largest and brightest colored Spencers. It includes all the standard Spencers of merit and the latest novelties.....Pkt. 15c; oz. 40c
- "Brilliant Blend" Mixture.** From the trial grounds of California we get a splendid mixture of Sweet Peas. **Brilliant Blend Mixture** is made up of varieties which have not come true to type in the second or third generation. In blooming they are a wonderful sight, and as these are not staple varieties, you may find in your garden a variety which is new and a possible prize winner.....Pkt. 15c; Oz. 40c
- Choice Mixture of Grandiflora Type** are considered easier to grow than the Spencers.....
- .....Oz. 10c;  $\frac{1}{4}$  lb. 30c; 1 lb. \$1.00



"Butterfly" or "Orchid Flowered"

**A Little Book of Annuals** (Alfred C. Hottes)  
.....Paper Cover, \$1.10; Cloth Cover, \$1.65  
Among the Annuals are some of the choicest flowers we have, and this little book opens the way to greater success in their culture.

## Sunflower (Helianthus)

Well known annuals, the small flowering sorts being useful for cutting; the tall varieties are valuable for backgrounds.

- Maroon Prince. New.** A dwarf growing single Sunflower, color a true maroon, the best red yet introduced, grows about 3 feet.....Pkt. 15c
- Miniature.** Flowers single, bright orange.....Pkt. 10c
- Red Sunflower.** Single. This variety makes a hedge or border, especially interesting and attractive. 5 to 6 ft. ....Pkt. 10c
- Globosus Fistulosus.** 6 ft. tall. Double saffron.....Pkt. 10c
- Multiflorus.** Forms a dwarf plant. Each branch carries double golden yellow flowers.....Pkt. 10c
- Double Chrysanthemum-Flowered,** 5 to 6 ft.....Pkt. 10c
- Mammoth Russian.** Grown for poultry.....10c

## Sweet Wivelsfield

A very promising new annual, resembling an extra fine Sweet William, but has a greater variety of coloring and is distinct in habit and freedom of growth, few plants can compare with Sweet Wivelsfield for wealth of color and lengthy season of flowering.....Per Pkt. (12 seeds) 25c

## Sweet William (Dianthus Barbatus)

The best varieties of Sweet William are of exceedingly beautiful colors, and the large fragrant flowers are borne in trusses of great size. Hardy biennial; height 1½ to 2 feet

- Auricula-Flowered,** or Hunt's Perfection. This strain is a large-flowered selection of the Auricula-Eyed section, the most beautiful and admired of all Sweet Williams. The individual flowers and trusses are of extraordinary size, and the range of color, all showing a clear, white eye, is superb.....Pkt. 10c
- Pink Beauty.** An exceedingly pretty variety with beautiful salmon pink flowers.....Pkt. 10c
- Double Mixed.** This mixture you will find of very superior quality; containing all colors and shades.....Pkt. 10c
- Single Finest Mixed.** A very choice assortment of all the best single-flowering varieties.....¼ oz. 20c; Pkt. 10c

## Sweet Rocket (Hesperis)

An old-time garden favorite. It is a hardy perennial, excellent to grow in a permanent border.  
Purple, White and Mixed, each.....10c

## Thunbergia (Black-eyed Susan)

Annual trailing plants; used extensively in hanging-baskets, vases, etc.; buff, white, dark eyes; mixed .....10c

## Tritoma

Torch-lily, Red-Hot-Poker or Flame Flower. Standard name Kniphofia. 2 to 3 ft.....Pkt. 10c

## Trollius (Globeflower)

**Hybridus.** Perennial. 1½ ft. Pale yellow to deep gold. Like a large buttercup.....Pkt. 20c

## Veronica (Speedwell)

**Spicata.** Perennial. 1½ ft. Bears spikes of lovely blue flowers. Likes a sunny exposure.....Pkt. 10c

## Vinca (Periwinkle, or Old Maid)

Annual. 2 ft. Ornamental free-blooming plants and one of the most satisfactory flowering bedding plants we have. It is best to start the seed early indoors or in a hotbed. Mixed.....Pkt. 10c



## Verbena

Half hardy perennial trailer, one foot high, usually treated as an annual.

- Auriculæflora.** Shades of pink, red, purple and blue, all with distinct white eye.....10c
- Gigantea Mixed, New Type**.....Pkt. 20c
- Mammoth Mixed.** This extra choice mixture includes a wide range of very beautiful colors. ¼ oz. 25c.....Pkt. 10c

## Viola Cornuta or Tufted Pansies

(Also known as Pansy Violets, Johnny-Jump-Ups) They are superior to pansies where effect is wanted, the colors being particularly clear and distinct; they also bloom for a longer time.

- Admiration.** Large Dark Blue.....Pkt. 10c
- Blue Perfection.** Light Blue.....10c
- Half Mourning.** Half Purple Violet, Half White.....10c
- Jersey Gem.** New. Deep Violet-blue, compact, blooms all summer .....25c
- Lutea Splendens.** Rich Golden Yellow.....10c
- Rosea Grandiflora.** (Rose Queen).....10c
- White Perfection**.....10c
- Mixed,** contains many varieties.....10c

## "Wild Garden" Flower Seed

Each package contains about 100 varieties of hardy flower seeds mixed together, and wherever planted will insure something new almost every day. Is suitable for sowing where wildness is preferred to order and precision. ¼ lb. 70c; Oz. 25c.....Pkt. 10c

## Barnard's Cut-Flower Mixture

Is a special mixture of hardy annuals, blended to give a continuous succession of beautiful cut-flowers from early summer until late fall. In keeping with other decorative features the use of cut-flowers in the dwelling is more and more becoming a necessity. This mixture will supply different forms and new colors daily during the season, and flower schemes may be carried out for any occasion.....

Per Pkt. 15c; ½ Oz. 25c; 1 Oz. 40c

# Barnard's Popular Zinnias

## Giant Dahlia, Flowered Strain

This strain is indeed dahlia-like in form and has been much improved in recent years through painstaking selection. They attain a height of 3 feet and produce truly mammoth flowers, about 5 inches across.

**Golden Dawn. New.** The flowers are a golden yellow, comparable to that color in the Double Giants, or a shade between Golden State and Canary Bird in the Dahlia-flowered type. They are of enormous size and of the most perfect type. . . . . Pkt. 25c

**Youth. New.** Blooms are a beautiful shade of soft rose, well formed, true Dahlia-flowered type, grown on the usual robust Dahlia-flowered plant. It is a very vigorous and free-flowering variety. Youth is three or four shades lighter than our popular Exquisite. . . . . Pkt. 25c

**Crimson Monarch.** The largest and best of the truly red shades. The individual flowers are often 6 inches in diameter. . . . . 15c

**Dream.** A deep lavender Zinnia of a most lovely color, combining delightfully with light rose and pink. 15c

**Exquisite.** This delicate light rose is well described by its name. It is artistically tinted, the center petals becoming deeper rose in shade. Beautiful in combination with Polar Bear. . . . . 15c

**Golden State.** The bud is of a clear yellow, but as the flower opens a deep orange appears. . . . . 15c

**Lemon Beauty.** Soft pastel tint of lemon-yellow. Unusual and attractive. . . . . 15c

**Old Rose.** Is still a popular variety. . . . . 15c

**Oriole.** A combination of orange and gold that makes one of the most attractive flowers. . . . . 15c

**Polar Bear.** A pure white. Deserving of a place in every garden. . . . . 15c

**Purple Prince.** A fine deep purple, large and well formed. . . . . 15c

**Scarlet Flame.** A large flower of beautiful bright scarlet. A soft blending of orange through the petals enriches its beauty. . . . . 15c

**Barnard's Special Mixture.** From named varieties. 15c

**Good Mixed Dahlia Flowered,** 1/4 oz. 50c. . . . . Pkt. 10c

## Lilliputian Zinnias

Of compact habit, not over 15 inches high; beautiful miniature, perfectly double flowers; splendid for bedding and good for cutting.

**Salmon Rose, Scarlet Gem, White Gem, Golden Gem and Mixed.** . . . . . Each, Per Pkt. 10c

## Flower Seeds for the Rock Garden

### SEEDS OF PERENNIALS—SUITABLE FOR THE ROCK GARDEN

**Alyssum Saxatile,** yellow. . . . . Per Pkt. 10c  
**Aquilegia Coerulea,** blue and white. . . . . 10c  
**Arabis Alpina,** white. . . . . 10c  
**Campanula Carpatica,** Blue or White. . . . . 10c  
**Candytuft,** sempervirens, White. . . . . 10c  
**Dianthus (Pink).** Assorted colors. . . . . 10c

**Forget-Me-Not,** mixed varieties. . . . . Per Pkt. 10c  
**Poppy Iceland,** Colors. . . . . 10c  
**Polyanthus,** Colors. . . . . 15c  
**Saponaria Occymoides** . . . . . 10c  
**Sedums,** in mixture. . . . . 10c  
**Violas or Tufted Pansies.** Colors. . . . . 10c

### SEEDS OF ANNUALS—SUITABLE FOR THE ROCK GARDEN

**Alyssum Maritimum,** white. . . . . Per Pkt. 10c  
**Ageratum,** Little Blue Star. . . . . 15c  
**Candytuft,** Annual sorts, colors. . . . . 10c  
**Cineraria Maritima** silvery foliage. . . . . 10c  
**California Poppy,** Colors. . . . . 10c  
**Clarkia,** Colors—for semi-shade. . . . . 10c  
**Helianthus Lilliput** . . . . . 15c  
**Mignonette** . . . . . 10c  
**Nasturtium,** dwarf, colors. . . . . 10c  
**Phlox,** dwarf varieties. . . . . 10c

**Petunia,** small flowering. . . . . Per Pkt. 10c  
**Pinks,** Single and Double. . . . . 10c  
**Portulaca,** Colors. . . . . 10c  
**Snapdragon,** dwarf kinds. . . . . 10c  
**Shirley Poppies** . . . . . 10c  
**Tagetes Signata Pumila,** Yellow. . . . . 10c  
**Thumbergia,** yellow, trailing. . . . . 10c  
**Violas or Tufted Pansies,** bloom first season. . . . . 10c  
**Virginia Stock** . . . . . 10c  
**Verbenas,** Colors, sow seed early. . . . . 10c

**Rock Gardens,** by F. F. Rockwell. It shows how to develop a charming and individualistic rockery on a tiny plot of ground as well as where space is unlimited. 86 pages; 31 illustrations; Cloth, \$1.00.



Lilliputian Zinnias, Are Very Popular

## Giant Double Zinnias

The flowers are of enormous size, thickly set with velvety petals. The plants are healthy, robust, vigorous growers, branching freely, 2 to 3 ft. high, excellent for grouping or cutting. Will be found very superior to the ordinary Zinnia.

**Crimson**                      **Violet**                      **Flesh Pink**  
**Buttercup**                  **Bright Scarlet**          **Yellow**  
**Orange**                      **Salmon Rose**              **White**

Each Per Pkt., 10c; 3 Assorted Colors, 25c

**Mixed Giant Double,** 1/4 oz., 35c. . . . . Per Pkt. 10c

**Miss Willmott.** One of the latest introductions of the California Giant Type. A delicate soft salmon-pink of great merit. . . . . Pkt. 15c

**Rose Queen.** Another California Giant of a darker pink than Miss Willmott, the flowers open first as bright rose with a deep rose red center and gradually develops into a deep rose. . . . . Pkt. 10c

**Pink Profusion.** New. A delicate shrimp pink, very large. . . . . Pkt. 15c

**Picotee.** Resembles the Picotee Carnation in a very unusual way. Each petal is tipped with some other than the self color. . . . . Pkt. 15c

**Red Riding Hood.** A dwarf. Scarlet, of the small pompon type. 1/4 oz. 30c. . . . . Pkt. 10c

## BARNARD'S Selected Vegetable Seeds

The following list includes the most useful varieties of Vegetable Seeds.  
Cultural directions are given on each packet.

### Beans (Dwarf Green-Podded Varieties)

If wanted by mail, see "Postage" second page of cover.

- Barnard's Stringless Green Pod.** A splendid bean. It is hardy and early, so that several plantings can be made during the season.  
..... Pkt., 10c; carton, 20c; lb., 50c; 2 lbs., 90c
- Burpee's Stringless Green Pod.** The pods are pale green, long and straight, perfectly round and meaty.  
..... Pkt., 10c; carton, 20c; lb., 50c; 2 lbs., 90c
- Full Measure.** A bean of recent introduction. Medium early.  
..... Pkt., 10c; carton, 20c; lb., 50c; 2 lbs., 90c
- Bountiful.** Early, hardy and the most productive, flat, green podded bush bean known. Stringless, rust resistant and of good flavor.  
..... Pkt., 10c; carton, 20c; lb., 50c; 2 lbs., 90c
- Red Valentine.** Improved Round Pod. One of the best known of the green-pod varieties. It is very hardy and a reliable yielder.  
..... Pkt., 10c; carton, 20c; lb., 40c; 2 lbs., 75c

### Dwarf Wax or Yellow Podded

- Davis Kidney Wax.** It is a reliable and exceedingly heavy yielder.  
..... Pkt., 10c; carton, 20c; lb., 45c; 2 lbs., 85c
- Wardwell's Kidney Wax.** A very popular, early variety.  
..... Pkt., 10c; carton, 20c; lb., 50c; 2 lbs., 90c
- Golden Wax, Improved.** A medium early variety and a heavy cropper.  
..... Pkt., 10c; carton, 20c; lb., 40c; 2 lbs., 75c
- Unrivalled Wax.** Ready for gathering within 65 days.  
..... Pkt., 10c; carton, 20c; lb., 50c; 2 lbs., 90c

### Pole Beans

- Kentucky Wonder, or Old Homestead.** Pods green, nine inches or more long, nearly round, fleshy, stringless, and judged to be the best flavor of all beans and the most popular green podded climber. It is an early and most prolific variety.  
..... Pkt., 10c; carton, 20c; lb., 35c; 2 lbs., 65c
- Golden Cluster Wax.** Long, broad, thick, pods borne in clusters. Prolific and corresponds to Kentucky Wonder in many ways.  
..... Pkt., 10c; carton, 20c; lb., 45c; 2 lbs., 85c
- Horticultural, Wren's Egg, or Speckled Cranberry.** An excellent corn bean.  
..... Pkt., 10c; carton, 20c; lb., 35c; 2 lbs., 65c

### Pole Lima

- Early Leviathan Lima.** The earliest variety of Pole Lima; produces pods in clusters. The best variety where the season is short.  
..... Pkt., 10c; carton, 20c; lb., 45c; 2 lbs., 85c
- King of the Garden Lima.** The pods are of enormous size, many specimens measuring from 5 to 8 inches, and some containing seven beans to the pod, all perfectly formed and of superior quality.  
..... Pkt., 10c; carton, 20c; lb., 45c; 2 lbs., 85c

### Dwarf Lima

- Burpee's Dwarf Lima.** Plants make perfect bushes from eighteen inches to two feet high. They are sure croppers and immense yielders. Pods as large as those of the Pole Lima, and contain beans of the best quality.  
..... Pkt., 10c; carton, 20c; lb., 45c; 2 lbs., 85c
- Fordhook Bush Lima.** This is an excellent bush Lima bean for the home garden.  
..... Pkt., 10c; carton, 20c; lb., 50c; 2 lbs., 95c

## Beets

- Crosby's Egyptian.** Much in demand for forcing and early out-of-door sowing. Matures in 50 days. This beet is perfect in shape, and deepest red, almost black, in color.  
..... Pkt., 10c; oz., 15c; ¼ lb., 30c
- Fireball.** Handsome globe-shaped Beet, with smooth skin and very attractive color. The flesh is solid and sweet.  
..... Pkt., 10c; oz., 20c; ¼ lb., 40c
- Barnard's Selected Edmands.** For table use no other variety can equal it in fine quality. The skin is deep blood-red in color, flesh dark red, sweet and tender.  
..... Pkt., 10c; oz., 15c; ¼ lb., 30c



Barnard's Stringless Green Pod

## BEETS—Continued

- Eclipse.** This is an extra early beet, and if sown late, it is valuable for winter use.  
..... Pkt., 10c; oz., 15c; ¼ lb., 30c
- Detroit Dark Red.** A medium early globe-shaped beet of excellent quality. It is especially esteemed on account of its dark-red color.  
..... Pkt., 10c; oz., 20c; ¼ lb., 50c

## Swiss Chard—See Page 22

## Broccoli

- Culture and use same as Cauliflower.
- Green Sprouting.** An Italian vegetable that is becoming quite popular with American gardeners. Forms a head of a loose nature, each sprout developing a small broccoli. For early plants start seed in cold frame and transplant when weather permits. For table, prepare the same as Cauliflower.  
..... Pkt., 20c; oz., \$1.25
- Early Purple Cape, and White Cape.** Each.  
..... Pkt., 10c; oz., 50c

## Cabbage

- Early Jersey Wakefield.** Long recognized as the best earliest cabbage. In size, medium; in shape, pyramidal with pointed peak.....  
Pkt., 10c; oz., 35c; ¼ lb., \$1.25
- Copenhagen Market.** It is short-stemmed, the heads being produced almost on the ground. The leaves are tightly folded around each other, which permits close setting of plants. 100 days to mature.  
Pkt., 10c; oz., 60c; ¼ lb., \$2.00
- Glory of Enkhuizen.** A very good cabbage. Medium in size, forms a ball-shaped head which is very firm and of good keeping quality. Matures about two weeks later than Copenhagen Market.....  
Pkt., 10c; oz., 50c; ¼ lb., \$1.75
- Golden Acre.** This excellent new variety is the earliest round headed Cabbage. It will mature ahead of the earliest strains of Jersey Wakefield.  
Pkt., 15c; oz., \$1.00
- Early Dwarf Flat Dutch.** A well-known early short-stem variety. Heads of medium size and very compact .....  
Pkt., 10c; oz., 30c; ¼ lb., 75c
- Bugner.** A large late short stem cabbage. Head very solid and a splendid keeper. Outer leaves bluish green.....Pkt., 15c
- Danish Ballhead.** It is remarkable for the solidity of its heads and long-keeping qualities.  
Pkt., 10c; oz., 40c; ¼ lb., \$1.25
- Premium Large Late Drumhead.** Head enormous. Very hardy and desirable fall and winter variety, also a good shipper.  
Pkt., 10c; oz., 30c; ¼ lb., 75c
- American Drumhead Savoy.** The best of its class for home use and market. Heads large, solid and compact. Has rich, sweet flavor of the cauliflower when cooked.....Pkt., 10c; oz., 30c; ¼ lb., 95c

## Chinese, or Celery Cabbage

This vegetable is called Pe-Tsai, or Cut Cabbage, by the Chinese gardeners.  
Pkt., 10c; oz., 40c; ¼ lb., \$1.00

## Cauliflower

- Barnard's Snowball.** For main crop and for every purpose except for first early, we emphasize Barnard's Snowball as a variety of the highest quality and reliable, sure cropping strain.....  
Pkt., 20c; ¼ oz., 75c; oz., \$2.50; ¼ lb., \$9.00

## Carrots

- Barnard's Improved Danvers.** This is a splendid strain which produces fine, broad-shouldered carrot about eight inches long, very uniform in shape. Color is handsome orange red.  
Pkt., 10c; oz., 20c; ¼ lb., 50c
- Chantenay.** Deep red flesh, fine grained and sugary. One of the best for home or market garden. It is early, grows about six inches long; stump rooted, always smooth. A heavy cropper.  
Pkt., 10c; oz., 20c; ¼ lb., 50c
- Ox Heart, or Guerande.** It is intermediate between the half long and horn varieties. Roots are short and thick, cylindrical in shape, and rich orange color. The flesh is fine grained. Little core. Good on shallow or heavy soils.  
Pkt., 10c; oz., 20c; ¼ lb., 40c

## Celeriac, Turnip Rooted Celery

- Barnard's Giant.** Very large roots. Flesh white with a stronger and sweeter flavor than other varieties.....Pkt., 10c; oz., 40c; ¼ lb., \$1.40
- Large Smooth Prague.** Roots smooth and almost round. An excellent keeper. Dig in the fall and store like beets.....Pkt., 10c; oz., 30c; ¼ lb., 85c

## Celery

- Golden Self-Blanching.** The heart is large, solid, golden yellow in color, and of delicious flavor. It will turn at maturity to a yellowish white without banking, but like all other celeries is improved by having some soil brought up to the stalks.....  
Pkt., 15c; oz., \$1.00
- White Plume.** It is the earliest Celery in cultivation, but will not keep longer than the holiday season.....Pkt., 10s; oz., 40c; ¼ lb., \$1.25
- Giant Pascal.** Broad, thick, solid cream-colored stalks of handsome appearance.  
Pkt., 10c; oz., 40c; ¼ lb., \$1.25
- Giant Golden Heart.** Large size, beautiful color, crisp and deliciously flavored. One of the best celeries for market, and for home use.  
Pkt., 10c; oz., 40c; ¼ lb., \$1.25
- Winter Queen.** Makes broad and solid white stalks. Close, compact grower.  
Pkt., 10c; oz., 40c; ¼ lb., \$1.25

## Corn, Sweet or Sugar

- Add postage, if wanted by mail — see 2nd page of cover.
- Golden Sunshine.** Is a new extra early yellow sweet corn which is ready for use from a week to ten days earlier than the popular Golden Bantam.....  
Pkt., 10c; carton, 20c; lb., 40c; 2 lbs., 75c
- Golden Bantam.** The cob is small, but fills out nicely with large, deep cream-colored kernels, which turn to yellow when entirely ripe.  
Pkt., 10c; carton, 20c; lb., 35c; 2 lbs., 65c
- Mammoth White Cory.** It is a dwarf variety and a wonderfully prolific yielder, the ears being very uniform in size.....  
Pkt., 10c; carton, 20c; lb., 35c; 2 lbs., 65c
- Bantam Evergreen.** One-third larger than Golden Bantam. Ten days to two weeks later, and will mature after that variety has passed the usable stage  
Pkt., 10c; carton, 20c; lb., 35c; 2 lbs., 65c
- Stowell's Evergreen.** The most popular late Sweet Corn. More extensively planted than any other sort. Ears are of good size, grain deep, tender and sugary, remaining a long time in condition for cooking.....  
Pkt., 10c; carton, 20c; lb., 35c; 2 lbs., 65c
- Country Gentleman.** One of the best known of the midseason varieties. Is the old shoepeg type of kernel; pure white, very sweet and tender.....  
Pkt., 10c; carton, 20c; lb., 35c; 2 lbs., 65c
- Early Evergreen.** Possessing all the merits of the Stowell's and maturing about ten days earlier. It is a splendid Corn for either the gardener or canner .....  
Pkt., 10c; carton, 20c; lb., 35c; 2 lbs., 65c
- Black Mexican.** Well known and a favorite in a great many home gardens, the kernels having a decidedly bluish tinge when ready to eat, later turning to black. It is one of the sweetest varieties in cultivation.....  
Pkt., 10c; carton, 20c; lb., 35c; 2 lbs., 65c

## Cornsalad, or Feticus

One ounce will sow about 18 square feet.

- Broad-Leaved. (Large-Seeded).** A delicious salad, used during the winter and spring months as a substitute for lettuce, and also cooked and used like spinach or with celery stalks makes a good mixed salad.....Pkt., 10c; oz., 20c; ¼ lb., 50c

## Cress, or Peppergrass

- Sow early in the spring, rather thickly, in shallow drills, one foot apart, in the open ground. Cut when 2-3 inch high.
- Double Curled.** For salads and garnishing. Leaves are pungent.....Pkt., 10c; oz., 15c; ¼ lb., 40c



## Cucumber

**Early Fortune.** Slightly longer than "Arlington White Spine," more cylindrical in shape, with very dark green skin and thick flesh, which is tender and crisp. Pkt., 10c; oz., 20c; ¼ lb., 50c

**Davis Perfect.** A splendid cucumber for the home garden. Possesses all the merits of the best slicing varieties. Pkt., 10c; oz., 20c; ¼ lb., 50c

**Arlington White Spine.** Long fruits of dark green color. Pkt., 10c; oz., 15c ¼ lb., 40c

**Improved Long Green.** A favorite for sweet pickles and also desirable for slicing. Pkt., 10c; oz., 20c; ¼ lb., 50c

**Early Cluster.** Vine vigorous, producing the bulk of the crop near the root and in clusters. Pkt., 10c; oz., 15c; ¼ lb., 40c

**Extra Early Green Prolific.** Small, good for pickles. Pkt., 10c; oz., 15c; ¼ lb., 40c

**Chicago Pickling.** One of the most valuable of the pickling varieties. Of robust growth, it is a reliable and heavy cropper. Fruit is of fine dark green color. In shape, tapering to each end and very uniform. Pkt., 10c; oz., 15c; ¼ lb., 40c

**Japanese Climbing.** Can be trained upon fences and trellises, producing good fruit for slicing or pickling. Pkt., 10c; oz., 20c; ¼ lb., 50c

## Egg Plant

**Black Beauty.** Spineless and rich purplish black skin; very attractive and of best quality. Pkt., 10c; oz., 50c; ¼ lb., \$1.50

**New York Improved Purple.** This variety is a general favorite for private use. Fruits large, oval; color a splendid dark purple. Pkt., 10c; oz., 50c; ¼ lb., \$1.50

## Endive

**Green Moss Curled.** A unique variety, somewhat resembling a tuft of moss. Very crisp, tender and of good flavor. Being less hardy than other sorts, it requires protection from cold. Pkt., 10c; oz., 15c; ¼ lb., 40c

**Broad-Leaved Batavian.** Has slightly wrinkled thick leaves. It is usually grown for use in soups and stews. Pkt., 10c; oz., 15c; ¼ lb., 40c

## Kale, or Borecole

**Dwarf German.** A dwarf variety, spreading out under good cultivation to 2 feet in diameter; the leaves are very beautifully curled, and of bright green. Pkt., 10c; oz., 15c; ¼ lb., 50c

**Green Curled Scotch.** About two feet high. Pkt., 10c; oz., 15c; ¼ lb., 50c

## Kohlrabi

**White Short Leaved.** It is very early and the best for outdoor culture. Bulb is greenish-white, smooth, of finest texture and quality. Pkt., 10c; oz., 30c; ¼ lb., 85c

**Early White Vienna.** Early, small, white bulb. Best for table use. Pkt., 10c; oz., 25c; ¼ lb., 75c

## Leek

**London Flag.** This is the sort chiefly grown by market gardeners. Pkt., 10c; oz., 25c; ¼ lb., 75c

**Musselburg.** Large and broad leaves. Flavor mild and pleasant. Pkt., 10c; oz., 25c; ¼ lb., 75c

## Lettuce

### Curled or Loose Head Varieties

**Grand Rapids.** One of the best looseleaf Lettuces for extra early planting. Handsome plants, with large, crisp, curled and fringed leaves. Pkt., 10c; oz., 20c; ¼ lb., 65c

**Black-Seeded Simpson.** Large, bushy plants with attractively crumpled and fringed light green leaves. A favorite for both home and market. Pkt., 10c; oz., 20c; ¼ lb., 60c

**Prizehead.** Well known, loose-heading lettuce quite distinct from most other sorts on account of its peculiar color, light green shading to bright reddish brown. Pkt., 10c; oz., 20c; ¼ lb., 60c

### Cabbage or Heading Varieties

**Big Boston.** Early. Large, solid heads; outer leaves deep green with brownish edges; inner leaves light yellow. Largely grown for market. Pkt., 10c; oz., 20c; ¼ lb., 65c

**Improved Hanson.** This is one of the very best for the home garden. Forms solid heads with the inner leaves nicely blanched. Pkt., 10c; oz., 20c; ¼ lb., 60c

**Wayahead.** It is not only earlier than May King, and other fine early varieties, but the tightly folded heads are generally larger in size. Pkt., 10c; oz., 25c; ¼ lb., 65c

**May King.** Can be planted very early in the spring. Matures more quickly than any other of its class, forming large heads, the inner leaves blanching yellow, the outer ones somewhat tinged with brown. Pkt., 10c; oz., 25c; ¼ lb., 65c

**New York or Wonderful.** A sure headed variety which is crisp, tender and of fine flavor. It is reliable in almost every soil. Pkt., 10c; oz., 25c; ¼ lb., 85c

### Trianon Cos Lettuce or Romaine Salad

It differs from ordinary Lettuce by the shape of the leaves, which are elongated. Pkt., 10c; oz., 25c; ¼ lb., 60c

## Mustard

**White English.** For salads or garnishing. Pkt., 10c; oz., 15c; ¼ lb., 25c

**Southern Giant Curled.** Leaves much crumpled at the edges and twice the size of the ordinary White Mustard. Pkt., 10c; oz., 15c; ¼ lb., 30c

## Muskmelon

**Rocky Ford.** Solid green flesh, sweet and melting. Pkt., 10c; oz., 15c; ¼ lb., 45c

**Milwaukee Market.** This excellent salmon fleshed melon is becoming very popular. Pkt., 10c; oz., 20c; ¼ lb., 65c

**Extra Early Knight.** The earliest high quality melon for the far north. Medium green flesh blending to light pink toward center, fairly thick and very sweet. Pkt., 10c; oz., 20c; ¼ lb., 50c

**Montreal Market.** A very large melon, extensively grown in the vicinity of Montreal. Deep green flesh of excellent quality. Pkt., 10c; oz., 20c; ¼ lb., 50c

**Osage.** The flesh is a rich salmon color, very thick and sweet and of delicious flavor. Pkt., 10c; oz., 20c; ¼ lb., 50c

**Sugar Rock or Honey Rock.** New. A most desirable melon for the Chicago region, grows half as large again as Rocky Ford, has deep orange flesh of a superior flavor, is very productive and of striking appearance. Matures in 85 days. Pkt., 15c; oz., 35c; ¼ lb., \$1.00

**Tip Top.** Hardy, vigorous-growing melon of Tip Top quality, commendable to either the truck grower or private gardener. Large size, yellow flesh, juicy and sweet. Pkt., 10c; oz., 20c; ¼ lb., 60c

## Watermelon

**Cole's Early.** For the northern states this is desirable on account of its extreme earliness and vigorous growth. This is the easiest to grow of all the Watermelons. If you have failed with other sorts, you may succeed with Cole's Early.....  
Pkt., 10c; oz., 15c; ¼ lb., 35c

**Kleckley Sweets, or Monte Cristo.** While the skin is perhaps too thin to admit of the melons being shipped great distances, it is most desirable to plant for home use.....Pkt., 10c; oz., 20c; ¼ lb., 60c

**Tom Watson.** The most popular of shipping melons, often reaching 40 lbs. Size 20x12 inches. Oblong in shape, with a thin but tough rind.....  
Pkt., 10c; oz., 15c; ¼ lb., 35c

**Halbert's Honey.** Fine medium early, home market melon.....Pkt., 10c; oz., 20c; ¼ lb., 60c

**Peerless, or Ice Cream.** A hardy and productive melon, oval shape, bright green mottled. Flesh light pink, firm and sweet.....  
Pkt., 10c; oz., 15c; ¼ lb., 35c

## Onion Seed

**Barnard's Yellow Globe.** This splendid strain of the high globe type onions matures early and very uniformly. The neck is small and ripens down close to the bulb. Color is an attractive bright yellow.....Pkt., 10c; oz., 25c; ¼ lb., 75c

**Yellow Globe Danvers.** A heavy cropper and good keeper. Skin silvery yellow; flesh white, comparatively mild and well flavored.....  
Pkt., 10c; oz., 20c; ¼ lb., 65c

**Southport White Globe.** One of the most beautiful globular onions. Of large size, fine quality.....  
Pkt., 10c; oz., 30c; ¼ lb., \$1.00

**Barnard's Select Red Globe.** It is a good yielder and matures early. Color a rich dark red; thin skin.....Pkt., 10c; oz., 25c; ¼ lb., 85c

**Prizetaker.** Very large mild-flavored onion, sometimes called "Mammoth Spanish." Attains its largest size when started in hotbeds and transplanted. It is quite globular in form with a light yellow skin, and in quality almost equal to the imported onions. A favorite variety to grow for exhibition purposes.....Pkt., 10c; oz., 25c; ¼ lb., 75c

**Ailsa Craig.** This is an onion of the Prizetaker type, which like that variety, in order to obtain best results, should be started in hotbeds.....  
Pkt., 10c; oz., 30c; ¼ lb., \$1.00

**Mammoth Silver King.** In this onion are combined these desirable qualities: immense size, fine shape, white flesh of wonderful tenderness and sweetness. For exhibition purposes and for fancy grocery trade this onion is a desirable one to grow.....Pkt., 10c; oz., 30c; ¼ lb., 80c

**Yellow Flat Danvers.** This differs from Yellow Globe Danvers in that the bulb is flatter.....  
Pkt., 10c; oz., 20c; ¼ lb., 60c

**Red Wethersfield.** Most popular of the red flat varieties. Grows to a large size and is very productive.....Pkt., 10c; oz., 25c; ¼ lb., 65c

**White Portugal.** An early, white, flat variety. A good pickling sort.....Pkt., 10c; oz., 25c; ¼ lb., 80c

**Early White Welsh Onion.** The best kind for green onions; forms no bulb. Plants can be propagated from divisions.....Pkt., 10c; oz., 30c; ¼ lb., \$1.00

## Okra or Gumbo

**White Velvet.** Bears round, white, smooth pods of extra large size, in great abundance.....  
Pkt., 10c; oz., 15c; ¼ lb., 30c

**Improved Dwarf.** A distinct early variety. Pods comparatively short.....  
Pkt., 10c; oz., 15c; ¼ lb., 30c

## Parsnip

**Magnum Bonum.** Of decidedly handsome appearance, smooth, heavy roots, which are broad at the shoulder, finely grained, and of superior quality.....Pkt., 10c; oz., 15c; ¼ lb., 35c

**Hollow Crown.** Standard sort, long, sweet and very productive. One of the best for general cultivation.....Pkt., 10c; oz., 15c; ¼ lb., 35c

**Improved Guernsey.** A half-long variety of good quality and recommended for the family garden.....  
Pkt., 10c; oz., 15c; ¼ lb., 35c

## Parsley

**Champion Moss Curled.** Extra large dark, green, tender, crimped and curled.....  
Pkt., 10c; oz., 20c; ¼ lb., 50c

**Fine Double Curled.** A curled variety having crimped leaves.....Pkt., 10c; oz., 15c; ¼ lb., 35c

**Plain or Single.** Plain leaves of excellent flavor.....  
Pkt., 10c; oz., 15c; ¼ lb., 35c

**Hamburg.** The edible portion is the fleshy root. It is highly esteemed for flavoring soups, stews, etc.....  
Pkt., 10c; oz., 20c; ¼ lb., 60c

## Pepper

**Chinese Giant.** A very large, mild-flavored pepper, of a bright scarlet color when ripe. Excellent for eating and stuffing.....  
Pkt., 10c; oz., \$1.00; ¼ lb., \$3.00

**Nocera.** Sweetest and mildest of all peppers. Can be picked from plant and eaten as one would eat an apple.....Pkt., 10c; oz., 50c; ¼ lb., \$1.75

**Pimiento.** The sweetest Pepper grown, does not contain the slightest trace of fieriness.....  
Pkt., 10c; oz., 50c; ¼ lb., \$1.50

**Large Bell, or Bull Nose.** A standard variety of vigorous growth and productive.....  
Pkt., 10c; oz., 50c; ¼ lb., \$1.50

**Sweet Mountain.** Similar to Bell; very popular for stuffed pickles.....Pkt., 10c; oz., 50c; ¼ lb., \$1.50

**Ruby King.** A pepper of large size, well known and much esteemed by truck growers. When ripe, its color is a beautiful ruby red, very attractive and of good quality.....  
Pkt., 10c; oz., 50c; ¼ lb., \$1.60

**Long Red Cayenne.** Slender fruit; green turning to scarlet. Very pungent and hot.....  
Pkt., 10c; oz., 50c; ¼ lb., \$1.50

## Pumpkin

**Small Sugar.** One of the best for the home garden. Flesh thick, fine grained, and very sweet.....  
Pkt., 10c; oz., 15c; ¼ lb., 35c

**Winter Luxury.** A fine cooking sort, 10 to 12 inches in diameter. Golden yellow, netted somewhat like a muskmelon. One of the very best to store for winter use.....Pkt., 10c; oz., 15c; ¼ lb., 40c

**Cushaw, Green Striped.** Large crookneck pumpkin. Cream-colored, striped with green.....  
Pkt., 10c; oz., 15c; ¼ lb., 40c

**Mammoth Tours.** Grown chiefly for exhibition purposes and for stock feed. It grows to an enormous size, frequently weighing over one hundred pounds. Skin salmon color; flesh yellow. Keeps a long time.....Pkt., 10c; oz., 15c; ¼ lb., 40c

**Connecticut Field.** The best cornfield pumpkin. Grown largely for stock purposes, but is very suitable for table use; an excellent keeper.....  
Oz., 10c; ¼ lb., 30c

**Large Cheese.** A large buff-colored variety of distinct shape, used extensively for canning.....  
Oz., 10c; ¼ lb., 25c

## Garden Peas

Postage must be added to price of peas if wanted by mail. See second page of cover.

- Barnard's Leader (Smooth).** Two ft. A round pea, in size similar to the First and Best, but more uniform and more prolific. Matures very early. Make first planting as early in the spring as the ground will permit and cover well.  
.....Pkt., 10c; carton, 20c; lb., 35c; 2 lbs., 65c
- Alaska (Smooth).** Standard extra early. Vines 2 ft. tall, bearing a large crop of pods, packed with small Peas.  
.....Pkt., 10c; carton, 15c; lb., 35c; 2 lbs., 65c

## Wrinkled Varieties

- Little Marvel.** 18 inches. The ideal pea for the home garden, early very sweet and productive. Pods borne in pairs; they are about 2½ inches in length, well filled with large peas of delicious flavor. This variety is taking the place of some of the older and better-known dwarf peas.  
.....Pkt., 10c; carton, 20c; lb., 40c; 2 lbs., 75c
- American Wonder.** 12 inches. Very dwarf; matures early and is vigorous and productive, so well known that it needs but little description here.  
.....Pkt., 10c; carton, 20c; lb., 40c; 2 lbs., 75c
- Premium Gem.** 18 inches. A well-known and very satisfactory variety for the home garden. A little taller and later than the American Wonder. Pods of good size; peas very sweet.  
.....Pkt., 10c; carton, 20c; lb., 40c; 2 lbs., 75c
- Nott's Excelsior.** 15 inches. The pods average fully one-third larger than those of American Wonder, and while Nott's Excelsior may not always be quite so early by a few days, are all ready for picking at one time. Each pod contains six to eight large peas.  
.....Pkt., 10c; carton, 20c; lb., 40c; 2 lbs., 75c
- Dwarf Telephone.** 18 inches. This grand pea is rapidly gaining favor among gardeners of all classes. In habit it is dwarf and stocky. Bears close planting and requires no sticks or supports. The pods frequently measure five inches in length, and are broad, straight, and remarkably well filled. A splendid mid-season variety.  
.....Pkt., 10c; carton, 20c; lb., 40c; 2 lbs., 75c
- Laxtonian.** 18 inches. The largest-podded of the dwarf wrinkled peas. A splendid new variety, a favorite with those who grow for the market and ideal for the home. Might be called a Dwarf Gradus. The peas have the same delicate flavor of that variety. Laxtonian matures earlier and is very prolific.  
.....Pkt., 10c; carton, 20c; lb., 40c; 2 lbs., 75c
- Gradus, or Prosperity.** 20 to 30 inches. A grand, early, large podded wrinkled pea. Has become one of the favorites for the home garden in every section of the country. Pods are from 4 to 4½ inches in length and the peas are unusually large, very sweet and of delicious flavor.  
.....Pkt., 10c; carton, 20c; lb., 40c; 2 lbs., 75c
- Alderman.** 4 feet. A grand, second early pea. It is a vigorous growing, productive variety, bearing pods of immense size. 5 inches in length. Very handsome dark green color. The peas are large, and in quality sweet and tender.  
.....Pkt., 10c; carton, 20c; lb., 40c; 2 lbs., 75c
- Tall Telephone.** 4 feet. An old, well-known variety. One of the best of the late maturing sorts. Pods are large, containing 8 to 10 peas of good quality and flavor.  
.....Pkt., 10c; carton, 20c; lb., 40c; 2 lbs., 75c
- Champion of England.** 4 to 5 feet. A splendid variety and a favorite late pea for the home garden. Pods are large, well filled with peas of good quality.  
.....Pkt., 10c; carton, 20c; lb., 40c; 2 lbs., 75c

### Cartons of Peas, Beans and Sweet Corn

These special packages are designed for those who find a packet too small and a pound more than sufficient. The carton is between the two sizes, and contains a desirable quantity for the family garden.

## Radishes

### OLIVE, GLOBE AND TURNIP-SHAPED

- Barnard's Early Scarlet Globe.** A round, red, turnip-shaped Radish, with small tops and of very quick growth, deserving general cultivation on account of its rich scarlet-red color, almost crimson and its white, crisp, tender flesh.  
.....Pkt., 10c; oz., 15c; ¼ lb., 40c
- Barnard's Scarlet Turnip White Tipped.** One of the best Radishes for the home garden for early planting outdoors. The roots are nearly round, slightly flattened on the underside. The color is very bright, deep rose-carmine scarlet with a distinctly white tip. The flesh is white and of the best quality.  
.....Pkt., 10c; oz., 15c; ¼ lb., 40c
- French Breakfast.** An oblong-shaped radish. Fine for open ground or forcing. Valued for its excellent quality and fine color, which is a beautiful scarlet on the body and white at the extremity. Flesh white, tender and mild.  
.....Pkt., 10c; oz., 15c; ¼ lb., 35c
- Sparkler.** A splendid radish of the same type as the Scarlet Turnip White Tip, but larger and showing more white, practically the whole lower portion being white and the upper part deep scarlet.  
.....Pkt., 10c; oz., 15c; ¼ lb., 40c
- Early Scarlet Turnip.** An old, well-known variety; bright scarlet, solid white flesh.  
.....Pkt., 10c; oz., 15c; ¼ lb., 40c
- Early White Turnip.** Very much like the scarlet; a trifle earlier in maturing. Skin and flesh pure white.  
.....Pkt., 10c; oz., 15c; ¼ lb., 35c
- Crimson Giant.** A large globe-shaped variety. Handsome deep scarlet; thin skin, solid white flesh of best quality. Attains a large size without becoming pithy or losing its crispness.  
.....Pkt., 10c; oz., 15c; ¼ lb., 35c

## Half Long and Long Varieties

- White Icicle.** The finest long, white Radish; the young Radishes are ready for use in 25 days, and continue to grow, fully retaining their crisp tenderness and mild flavor until quite large.  
.....Pkt., 10c; oz., 15c; ¼ lb., 40c
- Chartier.** One of the very best for outdoor sowing in summer. Roots bright crimson in upper portion, shading to white at the tip.  
.....Pkt., 10c; oz., 15c; ¼ lb., 35c
- Long Scarlet Short Top.** Roots 6 inches in length, about one-third of which grows above the ground. Color, bright red.  
.....Pkt., 10c; oz., 15c; ¼ lb., 40c
- Cardinal or Brightest Long Scarlet.** Vivid scarlet, tipped with white.  
.....Pkt., 10c; oz., 15c; ¼ lb., 40c
- White Strassburg.** A good, late radish, oblong shape. Both skin and flesh are pure white. Roots when fully grown, about 6 inches in length and 2 inches in diameter.  
.....Pkt., 10c; oz., 15c; ¼ lb., 40c
- White Stuttgart.** Another good summer radish, somewhat turnip-shaped. Grows quickly and attains a good size. Skin and flesh pure white and quality excellent.  
.....Pkt., 10c; oz., 15c; ¼ lb., 40c

## Winter Varieties

- Long Black Spanish.** A long, very hardy radish. Skin nearly black; flesh pure white.  
.....Pkt., 10c; oz., 15c; ¼ lb., 40c
- Chinese White.** A large, white smooth skin radish, cylindrical in shape. Mildest flavored of the winter sorts.  
.....Pkt., 10c; oz., 15c; ¼ lb., 40c

## Rhubarb

- Victoria.** Leaf stalks tall and large. Skin thick and red stained.  
.....Pkt., 10c; oz., 15c; ¼ lb., 45c
- Linnaeus.** The earliest variety grown. Desirable for family garden.  
.....Pkt., 10c; oz., 15c; ¼ lb., 45c

# Salsify (Or Vegetable Oyster)

**Mammoth Sandwich Island.** A new and improved type producing roots of nearly double the size and weight of the old sort.  
Pkt., 10c; oz., 25c; ¼ lb., 75c

# Spinach

**Bloodsdale, or Savoy Leaved.** Of upright growth; leaves curled and crimped, thick and fleshy. Keeps well after cutting.  
Oz., 10c; ¼ lb., 20c; lb., 50c

**Victoria.** Large, very dark green leaves, slightly crimped. Remains in good condition for market for a long time.  
Oz., 10c; ¼ lb., 20c; lb., 50c

**King of Denmark.** The best long-season spinach; remaining two weeks longer than others before bolting to seed.  
Oz., 10c; ¼ lb., 25c; lb., 60c

**Juliana.** A splendid new long season variety, an improved Victoria.  
Oz., 10c; ¼ lb., 25c; lb., 60c

**New Zealand.** Yields an abundance of the tenderest Spinach during the hottest months of the year, or in dry arid localities where the ordinary Spinach runs to seed. The ends of the branches and leaves are tender and will supply good greens all summer  
Pkt., 10c; oz., 15c; ¼ lb., 35c

# Swiss Chard or Spinach Beet

Also called Sea Kale Beet. The middle of the leaf, or midrib, is cooked and served like asparagus. The other portions of the leaf may be used like spinach.

**Giant Lucullus and Yellow Cutting.** Each.  
Pkt., 10c; oz., 15c; ¼ lb., 40c

# Squash

**Mammoth White Bush.** An early, round, flat squash color clear white, handsomely scalloped. Called Patty Pan.  
Pkt., 10c; oz., 15c; ¼ lb., 45c

**Mammoth Summer Crookneck.** A well-known and standard variety. Grows from 18 inches to two feet in length. The shell is hard and warted and of an attractive bright yellow color.  
Pkt., 10c; oz., 15c; ¼ lb., 45c

**Cocozelle (Italian Vegetable Marrow).** A bush summer variety. Fruits oblong, 12-16 inches in length. Color dark green marbled with yellow and dark green stripes. This variety is unsurpassed in richness of the cooked product, which is of distinct flavor.  
Pkt., 10c; oz., 15c; ¼ lb., 50c

**Table Queen, or Acorn.** New and of real merit, with all the good qualities of the Hubbard but only about 6 inches long and 4 inches in diameter. Its green shell is smooth, reducing waste. Unexcelled for baking and pies.  
Pkt., 10c; oz., 20c; ¼ lb., 60c

**Hubbard and Warted Hubbard.** Favorite winter squashes. Shell dark green and extremely hard. Flesh rich orange; dry and sweet. Splendid for cooking or pies. Each.  
Pkt., 10c; oz., 15c; ¼ lb., 50c

# Herb Seeds

Those marked with a (\*) are perennial.

**Basil, Sweet.** The seeds and stems used for flavoring soups.  
Pkt., 10c; oz., 35c

**\*Catnip.** Used for medicinal purposes.  
Pkt., 10c; oz., 60c

**Dill.** Seeds and leaves used with pickles, etc.  
Pkt., 10c; oz., 15c; ¼ lb., 35c

**\*Fennel.** Seeds used for flavoring and garnishing  
Pkt., 10c; oz., 25c

**\*Lavender.** Used in the making of perfume and scented clothing.  
Pkt., 10c; oz., 30c

**\*Marjoram Sweet.** Used both in the green and dry state for seasoning.  
Pkt., 10c; oz., 30c; ¼ lb., 85c

# Tomato

**Barnard's Early June.** The same color and about as early as June Pink but is larger with a very smooth firm skin.  
Pkt., 15c; oz., 50c

**Earliana.** A fine scarlet tomato. Ready for the market several days ahead of any other variety. Ripens uniformly and is a good yielder.  
Pkt., 10c; oz., 40c; ¼ lb., \$1.25

**John Baer.** An extra early scarlet fruited variety of superior merit. The fruits are the largest of the extra early sorts and are also smooth, firm and of excellent quality.  
Pkt., 10c; oz., 40c; ¼ lb., \$1.25

**Marglobe.** A new and excellent scarlet tomato of fine quality and is very productive.  
Pkt., 10c; oz., 50c; ¼ lb., \$1.75

**Beauty, Improved Strain.** Medium early, very uniform in shape. Skin smooth, crimson with purplish tinge. Flesh solid and of excellent flavor.  
Pkt., 10c; oz., 40c; ¼ lb., \$1.25

**Bonny Best.** The crop ripens more uniformly than any other early scarlet fruited sort.  
Pkt., 10c; oz., 40c; ¼ lb., \$1.25

**Crimson Cushion.** Bears continuously, large and smooth; solid as a beefsteak; nearly seedless.  
Pkt., 10c; oz., 50c; ¼ lb., \$1.75

**Dwarf Champion (Tree Tomato).** Quite distinct from the other varieties in habit of growth and foliage. Good sort for the home garden.  
Pkt., 10c; oz., 40c; ¼ lb., \$1.25

**Ponderosa.** This is a very large, solid tomato. Color pink, changing to purple. On account of its large size it is suitable to grow for exhibition purposes. It is of good quality, however, and very largely in demand for home gardens.  
Pkt., 10c; oz., 50c; ¼ lb., \$1.75

**Golden Ponderosa.** A large Tomato of excellent quality and especially attractive when sliced with red ones.  
Pkt., 10c; oz., 50c; ¼ lb., \$1.75

**Stone.** A large, bright-red tomato, more widely planted than any other. Solid and productive, it is one of the very best for canning or slicing. Matures evenly.  
Pkt., 10c; oz., 35c; ¼ lb., \$1.00

**Strawberry, or Husk Tomato, Peach, Yellow Plum, Red Currant, and Red Cherry.** Each.  
Pkt., 10c; oz., 75c

# Turnip

**Purple Top White Globe.** A fine table turnip. It is an early and heavy cropper as well as a good keeper.  
Pkt., 10c; oz., 15c; ¼ lb., 30c

**Purple Top Strap Leaf.** This is probably more extensively planted than any other variety. It is a very early flat turnip of medium size.  
Pkt., 10c; oz., 15c; ¼ lb., 30c

**Early Purple Top Milan.** The best for spring sowing. Of handsome appearance; somewhat flattened, white with purple top.  
Pkt., 10c; oz., 20c; ¼ lb., 40c

**American Purple Top Rutabaga.** Of excellent quality for the table and one of the best for stock feed.  
Pkt., 10c; oz., 15c; ¼ lb., 30c

**\*Pennyroyal.** For medicinal purposes.  
Pkt., 10c

**\*Rosemary.** Leaves used for seasoning and making of perfume.  
Pkt., 10c

**\*Rue.** Used for medicinal purposes; also recommended for diseases of poultry.  
Pkt., 10c

**\*Sage.** Grown very extensively for seasoning.  
Pkt., 10c; oz., 35c; ¼ lb., \$1.15

**\*Summery Savory.** Excellent for seasoning.  
Pkt., 10c; oz., 25c; ¼ lb., 70c

**\*Thyme.** For seasoning.  
Pkt., 10c; oz., 50c

**\*Wormwood.** Leaves with very bitter taste. Is grown for medicinal purposes.  
Pkt., 10c; oz., 40c

## Summer Flowering Bulbs

### Amaryllis

**Giant Hybrids.** Colors range from pure white ground with markings of rose, red, and crimson, to the richest self colors in scarlet, crimson, bright red, cherry, and maroon. Make very satisfactory pot plants. Our bulbs will produce large spikes with many blooms. **Each, 60c; Doz., \$6.00**

**Johnsonii.** Scarlet with clear white stripe. **Each, 50c; Doz., \$5.00**

**Equestre.** Orange-scarlet. Price. **Each, 30c; Doz., \$3.00**

### Begonias (Tuberous Rooted)

One of the choicest of the summer flowering plants. Useful for porch or window boxes and can be grown in any semi-shaded position, producing large, waxy flowers, blooming all summer.

The bulbs can be started indoors in April or planted in the open in June.

**Giant Single Varieties.** In shades of separate colors such as Pink, Red, White, Yellow, Orange or Mixed. **Each, 25c; Doz., \$2.50**

**Giant Double Varieties.** In shades as above; so very double they seem solid round balls. **Each, 35c; Doz., \$3.50**

**Giant Ruffled Crispa.** This is an extra fine strain of Single Begonias with fluted and ruffled edges. Colors as above. **Each, 35c; Doz., \$3.50**

### Caladium Esculentum (Elephant Ears)

**First Size Bulbs.** **Each, 15c; Doz., \$1.00**

**Extra Large Bulbs.** **Each, 25c; Doz., 1.50**

**Mammoth Bulbs.** **Each, 35c; Doz., 3.00**

**Extra Mammoth.** **Each, 50c; Doz., 4.50**

### Fancy Leaved Caladiums

Very decorative plants used in window boxes or pots. Heart-shaped leaves in various colors, veined and striped with red, pink and white. **Each, 35c; Doz., \$3.50**

### Callas

**Golden Yellow (Richardia Elliottiana).** A rich, lustrous golden-yellow of velvety texture; the foliage is dark green, with translucent creamy-white spots, which add much to its beauty. **Large Bulbs, 25c Each; \$2.50 Doz.**

### Cannas

Plants will be found much more satisfactory than the dormant roots. We will have growing pot plants of the popular kinds at planting time.

### Cinnamon Vine

Perfectly hardy—thriving in all soils, in sun or shade.

Medium size **Each, 10c; Doz., \$0.75**

Large size **Each, 15c; Doz., 1.00**

### Hyacinthus Candicans (Summer Hyacinth)

Thrives in any situation. **Each, 15c; Doz., \$1.35**

### Ismene Calathina (Peruvian Daffodil)

A grand summer-flowering bulb, producing large Amaryllis-like, pure white, fragrant blossoms. **Each, 25c; Doz., \$2.50**

### Madeira Vine (Climbing Mignonette)

A favorite climber with dense and beautiful shining foliage of very rapid growth.

Medium size **Each, 10c; Doz., \$1.00**

Select size **Each, 15c; Doz., 1.50**

### Montbretia

These beautiful bulbous flowers have long been neglected in this country. Some of the newer kinds have flowers as large as Gladioli. Each bulb will give you several fine spikes of flowers, many flowers to each spike. The long, slender green foliage works in well with many kinds of flowers. **Each, 10c; Doz., \$1.00; 100, \$7.50**

### Tube-Roses, Double Pearl

For flowering in the open border plant about the middle of May, or as soon as the ground becomes warm. Strong flowering bulbs. **Each, 10c; 3 for 25c; Doz., 75c; Large Size, Each, 15c; 3 for 35c; Doz., \$1.25.**

### Tuberoses, Single Mexican

Early flowering, producing several flower spikes from each bulb during July and August. **Each, 5c; Doz., 50c**



Different Types of Dahlias

## Pompon Dahlias

These miniature Dahlias are being grown more extensively each year and should be included in every collection, as they are invaluable for bouquets, and table decoration.

**Darksome.** Maroon shaded black. **Each, 35c**

**Dee Dee.** Splendid lavender, perfect little blooms. **Each, 35c**

**Eleganta.** Deep pink, quilled petals. **Each, 25c**

**Fairy Queen.** Yellow, edged carmine, very fine. **Each, 25c**

**Klein Domitea.** Bright golden terra-cotta. Profuse **Each, 25c**

**Little Beauty.** Soft mauve pink. **Each, 35c**

**Little David.** Bronzy orange; perfect form and profuse bloomer. Splendid cut flower. **Each, 35c**

**Little Jewel.** A fine, new Pompon, decorative variety. The miniature blooms are of good form and make a charming table decoration. Color, peach blossom pink. **Each, 40c**

**Little Lloyd.** Amber shading to orange. Most pleasing and effective. Profuse bloomer. **Each, 35c**

**Madeline.** Primrose, edged rosy purple. **Each, 25c**

**Rose Wilmouth.** Small, fine formed rose pink. **Each, 35c**

**Snowclad.** The best pure white pompon. Perfect form, early profuse and continuous bloomer. The ideal white pompon for all purposes. **Each, 25c**

### Dahlias—Continued

## Decorative Dahlias

- Alaska.** One of the very finest white decorative dahlias. Flowers of finest form and borne erect on rigid stems. Exhibition or cut flower. Each, 25c
- Bashful Giant.** Color, golden apricot, shaded darker. A very large exhibition flower. Each, 50c
- Break O'Day.** A Dahlia that should be in every collection. A delicate clear sulphur yellow, tinting to sulphur white at the tips. Each, 50c
- Charm.** Burnt orange, tinting to yellow. A popular autumn shade. Profuse bloomer on long stems. Each, 50c
- Colossal Pink.** A most wonderful new variety. Color clear pink, tinting lighter at tips of petals and at center. Plant dwarf, 3 to 4 ft. high. A strong vigorous grower, of branching habit, and an early and profuse bloomer. An ideal garden plant. Each, 50c
- Darlene.** An extremely early and profuse bloomer. Habit dwarf and branching. Color clear pure pink; splendid form. Each, 25c
- Eastern Star.** One of the best of its type and color. Clear yellow shading to buff and orange. Flowers large, of splendid full, regular form, and borne erect on cane stiff stems. Height, 5 feet. Each, \$1.50
- Insulinde.** One of the finest and most artistic Dahlias of distinct form with petals twisted and curled. Stems are two to three feet long, and flowers 9 to 10 inches across. Color, a rich saffron yellow shaded russet orange. Each, 75c
- Isabel Street.** An early and continuous bloomer, one of those varieties that bloom right through the hot Summer months. The color at base of petal is bright yellow, shading to bright rose red, with white tips; reflex pale pink. Each, 30c
- Jack Rose.** The best crimson for garden or cutting; that brilliant crimson red that made the "Jack" Rose popular and suggested the name. Each, 25c
- Jane Hall.** Color, clear buff yellow, with a bronzy suffusion on the outer petals, which sets off the bright high full center. Each, 50c
- Jersey Beauty.** A famous prize winning variety; blooms are carried high above the foliage on long, strong stems; flowers are of immense size and a vivid, glowing pink color; a wonderful keeper when cut. Each, 75c
- Millionaire.** Very large, full regular decorative form. Lavender pink tinting to white at center. 75c
- Mina Burple.** Color rich cardinal red, it is of fine form. The plant is a strong vigorous grower, producing the flower freely on long, stiff stems. 5 ft. Each, 35c
- Mr. C. H. Dresselhuys.** The color is similar to Delice, it is a more vigorous grower producing the soft rose pink, blooms freely on long stiff stems. Each, 35c
- Mr. Crowley.** A beautiful, luminous shade of salmon pink. Flowers of large size, fine form and substance. Plant is a sturdy grower and free bloomer on stiff stems. Fine for exhibition and the garden. Each, 75c
- Mrs. Carl Salbach.** Very large, a beautiful mauve pink tinting to white at center. 50c
- Mrs. C. H. Breck.** A most popular garden and cut flower variety. Flowers of medium size, crimson with buff yellow at tips and base of petals. Bright and effective; free bloomer on stiff stems. 25c
- Mrs. J. Harrison Dick.** Color citron yellow at center, outer petals suffused and overlaid salmon pink. Each, 25c
- Oregon Beauty.** Very bright vermilion cardinal, rich and glistening, flowers are large on long graceful stems. 25c
- Patrick O'Mara.** The color is an unusually soft and pleasing shade of orange-buff, slightly tinged with Neyron rose. It is large and borne on long, strong, erect stems. Each, 50c
- Pink Jack Rose.** A pink sport of Jack Rose; a very free bloomer and fine for bedding. 25c
- Queen Mary.** Color clear silvery cerise pink. The plant is a strong, healthy, vigorous, upright branching grower, producing the flowers freely on long, stiff stems. Each, 25c

## Cactus and Hybrid Cactus

- Attraction.** H. C. Large, elegant flower of a clear lilac rose, borne on long, stiff stems and a Dahlia of exceptional merit. A true paecony-cactus type. Each, 35c
- Countess of Lonsdale.** Cac. Yellow, suffused, salmon red, overlaid lavender. Early and profuse bloomer. Splendid garden variety. Each, 35c
- F. W. Fellows.** Cac. Flowers of immense size. Composed of numerous long, narrow, incurved petals of a lively orange scarlet. Should be in every collection. 50c
- Kalif.** H. C. A very large, pure scarlet red. A strong plant, producing the giant flowers freely on long, stiff stems. 50c
- Lawine.** Cac. White, lightly suffused pink. A strong, vigorous grower, early and profuse bloomer. One of the best for the garden. 25c
- Libelle.** Cac. Another grand variety of medium size, a profuse bloomer. Color a beautiful aster purple. 25c
- Mae Grefe.** Pure pink shading to rose pink, lighter at center and tips of petals. Each, 75c
- Mariposa.** H. C. Pink toned violet; very large fine form. Each, 75c
- Marjorie Castleton.** The color is a soft rosy pink, tinting lighter toward the center. It is a very rapid grower, with good stems. Each, 25c
- Mt. Shasta.** A wonderful blending of shell pink, shading darker, and tinting to light yellow at center; large. 75c
- Rube Girl.** H. C. Color soft yellow, overlaid and tipped coral red, giving the flower a bronzy effect, that lights up wonderfully under artificial light. The plant is semi-dwarf of branching habit. Each, 25c
- Sunset Glow.** A profuse bloomer, which holds a full center. One of the pleasing autumn shades, yellow at base of petals, suffused scarlet and tipped yellow. Each, 35c

## Paecony Flowered Dahlias

- Ann Duskin.** A new and entirely distinct variety, with very dark, rich foliage. The flowers are of good size, richest maroon, shading to jet black at center as the flower is opening. Each, 25c
- Autumn Glow.** A wonderful garden variety; a strong vigorous grower and an early, profuse bloomer. Color, yellow tipped scarlet; very bright and effective. 35c
- Canada.** One of the largest of all white Paecony Dahlias. Each, 35c
- Dr. John Lane.** Color yellow, suffused golden orange at base of petals, shading to rich bronzy scarlet toward the center and tinting lighter at the tip. Each, 50c
- Rodman Wanamaker.** Color a golden salmon pink turning to a shade of ochraceous salmon with a reflex of spinal pink. One of the finest autumn shades. Each, \$1.25
- Queen Elizabeth.** The color is a beautiful rosy mauve. The large flowers are on very long stems. Each, 35c

## Ball or Show Dahlias

- A. D. Livoni.** Clear, cerise pink, with beautifully quilled petals. Each, 25c
- Dorothy Peacock.** The best pink ball. 35c
- Maud Adams.** One of the most delicately lovely of this class, being a clear shell pink. It is beautifully formed and an early and free bloomer, on fine, stiff stems. 25c
- Mrs. Hartong.** Rich bronzy yellow suffused salmon pink. Each, 25c
- Queen Victoria.** Rich golden yellow, quilled petals. Each, 25c
- Snow.** Pure snow white. Each, 25c

## Century Dahlias (Single)

- James Weller.** Color, a rich golden yellow with one-third of each petal overlaid soft rosy red. Each, 50c
- Jessie.** Exquisite form, pure white, of large size and borne profusely on long, stiff stems. Each, 35c
- Red Century.** Large red, free blooming. Each, 25c
- Sunset Century.** Yellow at base of petal, outer half deep rich vermilion. Each, 25c

## Mixed Dahlias

- Decorative Varieties, Mixed. Doz., \$2.50
- Pompon Varieties, Mixed. Doz., 2.50
- Cactus Varieties, Mixed. Doz., 2.50
- Paecony Varieties, Mixed. Doz., 2.50
- Single Varieties, Mixed. Doz., 2.00
- Double White, Red, Yellow, Pink and Variegated. Doz., 2.00
- Mixed, all colors and types. Doz., 1.50
- Pompon Dahlias — See Page 23

## Gladioli

Mailed postpaid at single or dozen rates. Gladiolus bulbs weigh about 8 pounds per 100, and if wanted in quantity by mail, include enough to cover postage in your remittance. See "Postage" second page of cover.

- Alice Tiplady.** A large, vigorous, primulinus of a beautiful orange-saffron color. Strong grower. Extra fine..... **Each, 10c; Doz., \$1.00**
- America.** Soft flesh pink, tinged with lavender.....  
..... **Each, 10c; Doz., 50c; 100, \$3.75**
- Autumn Queen.** Creamy yellow with large red blotch in throat, tall growing, late flowering.....  
..... **Each, 10c; Doz., \$1.00**
- Baron Hulot.** Deep violet-purple, very dark on petal tips; light on upper petals in throat, lower petal a rich pansy-violet with a fleck of primrose-yellow.....  
..... **Each, 15c; Doz., \$1.25**
- Chicago White.** Pure white with faint lavender markings..... **Each, 10c; Doz., 60c; 100, \$4.00**
- Diana.** Clear, rich, mellow, blood-red grand spike of well-placed flowers. Considered by many the best red to date..... **Each, 15c; Doz., \$1.25**
- Dorothy McKibbin.** A symphony of pink and rose ruffles, extra early..... **Each, 15c; Doz., \$1.25**
- Evelyn Kirtland.** The flowers are a beautiful shade of rosy-pink, darker at the edges, fading to shell-pink at the center, with brilliant scarlet blotches on lower petals..... **Each, 10c; Doz., \$1.00**
- Gretchen Zang.** Soft pink, blending into deep salmon on the lower petals..... **Each, 10c; Doz., \$1.00**
- Halley.** Large flowers of delicate salmon-pink with a creamy blotch on lower petals.....  
..... **Each, 10c; Doz., 75c; 100, \$4.00**
- Helen Franklin.** Pure white violet striped, ruffled....  
..... **Each, 10c; Doz., \$1.00**
- Herada.** Pure mauve, glistening and clear, with deeper markings in the throat. **Each, 10c; Doz., \$1.00**
- Joe Coleman.** Large, rich red with darker blotch, ruffled, strong grower..... **Each, 15c; Doz., \$1.25**
- L'Immaculee.** Pure waxy white, many flowers open at one time..... **Each, 15c; Doz., \$1.25**
- Le Marechal Foch.** An improvement on America. Very delicate pink with enormous wide open flowers..... **Each, 10c; Doz., 85c**
- Los Angeles.** Shrimp pink with orange-carmine throat. The color tone is one of unusual delicacy. A wonderful flower of individuality and distinction..... **Each, 15c; Doz., \$1.25**
- Louise.** Orchid lavender with deeper blotch in throat, very refined, bears wide-open flowers on strong stems..... **Each, 15c; Doz., \$1.25**
- Mrs. Dr. Norton.** White, with edges suffused a soft rose-pink at tips of pointed petals. Lower petals have a blotch of sulphur-yellow, speckled at base with soft rose..... **Each, 15c; Doz., \$1.25**
- Mrs. Francis King.** A rich salmon-red, lower petals spotted with carmine. A splendid cut flower and an excellent keeper. **Each, 10c; Doz., 75c; 100, \$4.00**
- Mrs. Francis Pendleton.** Flowers are of large size, borne on strong straight spikes. A beautiful shade of light pink with a brilliant deep red blotch in throat on lower petals. A color combination rivaling of the finest Orchids in its richness. A spectacular variety.....  
..... **Each, 10c; Doz., 75c; 100, \$4.50**
- Maiden Blush.** An exquisite pink with lighter throat. Very dainty flower on graceful spike. Primulinus type..... **Each, 10c; Doz., 75c**
- Myrtle.** Clearest rose-pink softly dissolving into a clear creamy-white, distinctive in form and color..... **Each, 10c; Doz., \$1.00**
- Neoga.** A rich garnet..... **Each, 10c; Doz., \$1.00**
- Odin.** Salmon pink with darker blotch on lower petals, strong straight spikes with large wide open flowers..... **Each, 15c; Doz., \$1.25**
- Panama.** A seedling of "America" and greatly resembles the parent. A clear pink in color with wide open wax-like flowers well arranged on a good spike..... **Each, 10c; Doz., 75c; 100, \$4.50**
- Peace.** Immense white flowers with a lilac feathering in the throat of lower petals; graceful spikes..... **Each, 10c; Doz., 75c; 100, \$4.50**
- Princepine.** Carmine-red flower with a throat of glistening white..... **Each, 10c; Doz., 75c**
- Red Cannia.** Beautiful dark red on exceptionally tall and strong spikes..... **Each, 15c; Doz., \$1.25**
- Schwaben.** A clear canary-yellow shading to soft sulphur with a small blotch of deep garnet on the lower petals..... **Each, 10c; Doz., 75c; 100, \$4.25**
- Souvenir.** One of the best yellow. Large flowers of purest color. Is a primulinus type with tall, wiry stems. A very valuable variety for the garden and for cutting..... **Each, 15c; Doz., \$1.25**
- Virginia or Scarlet Princeps.** Intense scarlet, slightly deeper in throat; extra fine, early, massive flower, many open at a time..... **Each, 15c; Doz., \$1.25**
- War.** Deep blood-red, shaded crimson-black. Very tall and conspicuous..... **Each, 15c; Doz., \$1.25**
- White City.** Buds faintly tinted pink, but white when open. Very large flowers of superb form. Makes a vigorous healthy plant which blooms in mid-season with a strong, straight spike. We think very highly of it..... **Each, 15c; Doz., \$1.25**
- Wilbrink.** Lovely flesh pink with creamy blotch on lower petals, very beautiful. One of the earliest..... **Each, 10c; Doz., \$1.00; 100, \$4.00**

### Barnard's "Royal Mixture" of Gladioli

This is composed exclusively of high grade varieties, including many new and rare kinds not in our list. It embraces the greatest possible range of color, and contains the best large flowering sorts.  
**Doz., 75c; 100, \$4.00**

### Barnard's "Garden Beauty" Collection of Gladioli

— 25 Large Bulbs for \$1.00 —

(Postpaid, \$1.10)

This is a Grand Collection of Gladioli. All are of the modern large-flowering type, strong, healthy growing and free blooming. Every variety comprising the set is a gem. They must be seen to be appreciated, and we hope a large number of our patrons will avail themselves of this opportunity to glorify their gardens the coming summer with this collection.

Full cultural directions accompany each pkg.

### Notes on the Culture of Gladioli

The bulbs may be planted (top up) as early in the spring as the ground is fit to work. In the latitude of Chicago those planted in April will commence blooming in July, and by successive plantings every 2 weeks into the middle of the summer, a continuous succession of flowers may be enjoyed until frost. If the weather and ground is very dry, water liberally, particularly when the Gladioli are developing their buds and flowers.

The bulbs should be planted in light soils 4 inches deep, in heavy soils 2 inches, in medium heavy soils 3 inches deep. In groups or beds the bulbs should be planted 4 to 6 inches apart. A good way to secure a long season of bloom in a bed is to plant the bulbs 8 inches apart and then 2 weeks later fill in between with another lot of bulbs. If grown in rows the single rows should be 12 inches apart or in double rows 18 inches apart.

Gladioli—Continued

# Gladioli, Ruffled (Kunderdii)

The following is a selected list of this distinct type of gladioli, created and grown by Mr. A. E. Kunderd, the foremost gladioli hybridizer in America.

**Anthony B. Kunderd.** Tall, large intensely ruffled flower of delicate, deep cream color. Overspread finest blush pink. Entire lower petals beautiful primrose cream, flushed pink at edges. ....  
 Each, 20c; Doz., \$2.00; 100, \$15.00

**Blushing Beauty.** Blush pink, dainty pink throat lines. A marvel of daintiness and refinement. ....  
 Each, 20c; Doz., \$2.00; 100, \$15.00

**E. J. Shaylor.** Tall, very strong plant and large blooms. A beautiful, pure, deep rose-pink. Very choice. ....  
 Each, 10c; Doz., \$1.00; 100, \$7.50

**Favorite.** Beautiful orange salmon, deeper in throat. Tall, strong, vigorous plant with many large, finely ruffled flowers open at a time. Very fine. ....  
 Each, 25c; Doz., \$2.50; 100, \$18.75

**Kasson.** Large lavender rose-pink with deeper rose-pink throat. Finely ruffled. ....  
 Each, 10c; Doz., \$1.00; 100, \$7.50

**Kunderdii Glory.** Beautiful, creamy apricot with light tint of pink, and fine markings of red on lower petals. Can be grown over five feet tall with high culture. This is the first scientifically produced Ruffled Gladiolus ever sent out. It has received many certificates and awards, is known all over the world, and is the parent of many new varieties. ....  
 Each, 10c; Doz., \$1.00; 100, \$7.50

**Peep O'Day.** Tall, beautiful blushed pink on white ground. Long, feather barred throat. Grand. ....  
 Each, 20c; Doz., \$2.00; 100, \$15.00

**Purple Queen.** A deep violet-purple beauty. Throat darker. Medium ruffled. Very extra of this shade. ....  
 Each, 50c; Doz., \$5.00

**Rosalind.** Dark, analine-red, deeper throat. Very popular and often spoken of as one of Kunderd's best productions. Distinct and grand. ....  
 Each, 20c; Doz., \$2.00; 100, \$15.00

**Ruth Huntington.** Beautiful violet lilac with deeper lilac markings on lower petals. Large, strong plant with tall, fine spikes. A general favorite. ....  
 Each, 15c; Doz., \$1.50; 100, \$11.25

**Twilight.** Beautifully blushed creamy-buff with throat of grandest yellow and pink. Magnificent. ....  
 Each, 20c; Doz., \$2.00; 100, \$15.00

**Violet Glory.** Massive flower. Rich, self-color deep violet; deeper throat. Medium ruffled. Extra. ....  
 Each, 20c; Doz., \$2.00; 100, \$15.00

**White Glory.** A gorgeous, pure white of exact size and type as "Kunderdii Glory," with beautiful iris-blue throat. Fine as a delicate iris. ....  
 Each, 25c; Doz., \$2.50; 100, \$18.75

## Kunderd's "Glory Mixture" of Gladioli

This wonderful mixture comes direct from Mr. Kunderd and contains many grand new kinds that will be a pleasing surprise to admirers of this very popular flower.

Every color and shade known to the Gladiolus is included, and the many different forms to be found will also prove a great pleasure to the purchaser of this very fine mixture. Mr. Kunderd makes it a point each year to add many new varieties so as to keep it constantly improved. Plant them by the hundred.

Doz., \$1.75; 100, \$12.50

# Lilies

All herbaceous borders should have a few Lilies scattered through them. The sorts offered below can be planted with excellent results during the early spring months. It is the hardy border that Lilies do best as they get the benefit of the shade of the surrounding plants which is so necessary for their welfare.

Deep planting is recommended—at least six inches deep for most, and more than that for the Speciosum varieties. All Lilies form two sets of roots—one set below and the other above the bulb.

**Auratum (Golden Japan Lily).** This superb Lily has flowers 8 to 10 inches in diameter composed of six white petals, thickly studded with rich chocolate-crimson spots and a bright golden band through the center of each petal; exquisite vanilla-like perfume. This variety does not take kindly to having any kind of manure near its roots.

	Each	Doz.
Small Bulbs (8 to 9 inch circ.)	\$0.35	\$3.50
Medium Bulbs (8 to 11 inch circ.)	.50	5.00
Large Bulbs (11 to 12 inch circ.)	.75	7.50

**Elegans, or Thunbergianum Red.** Beautiful vermilion, with a few black spots; overspread with a bright lustre; petals broad and somewhat rounded. Beautifully formed. Each, 25c; Doz., \$2.50

**Elegans, or Thunbergianum Mixed.** Shades of Yellow, Orange and Red. Each, 25c; Doz., \$2.50

**Henryii.** A rare and beautiful Lily from the mountains of China. It is very hardy, a strong healthy grower and without doubt one of the best Lilies for garden culture. The flower stalks, 3 to 5 feet high, carry 5 to 8 flowers each. In color it is a rich apricot-yellow, lightly spotted with brown. Sometimes called "The Yellow Speciosum." .....  
 Medium Bulbs, 75c; Large, Each, \$1.00

**Regale, or Myriophyllum.** It is absolutely hardy. The flowers are white, slightly suffused with pink on the outer edges, with a beautiful shade of canary yellow at the center, and extending part way up the trumpet. It is delightfully perfumed, reminding one of the Jasmine, and lacking the heavy, oppressive odor of most Lilies. Blooms out-of-doors early in July. Thrives in any good soil not too wet. ....  
 4 to 5 inch, each, 35c; 5 to 6 inch, each, 50c;  
 6 to 7 inch, each, \$1.00; 8 inch, each, \$1.25

**Speciosum Rubrum, or Roseum.** White, heavily spotted with rich, rosy crimson spots; for garden adornment it is one of the best in our list. Its tall stems three to four feet tall are surmounted with many flowers; blooms in August.

	Each	Doz.
Small Bulbs	\$0.25	\$2.50
Medium Bulbs	.50	5.00
Large Bulbs	.75	7.50

**Speciosum Album.** Grows about four feet tall. Fragrant, glistening pure white flower. The best pure white garden lily. Each, 75c; Doz., \$3.75

**Tigrinum (Single Tiger Lily).** Flowers orange-red, spotted black. Each, 20c; Doz., \$2.00

**Tigrinum Fl. Pl. (Double Tiger Lily).** Large, double flowers. Each, 20c; Doz., \$2.00

**YOUR ATTENTION** is called to the **Madonna** or **Candidum** Lilies which are the most lovely hardy, white lilies known; they are especially fine for planting among **Delphiniums**, blooming at the same time. The bulbs arrive from France early in the fall and should be planted at that time. **We can supply them in August.**



# Hardy Perennial Plants

Plants should be forwarded by express; we do not pay the charges.

## Achillea (Millefoil)

**Ptarmica, fl. pl., "The Pearl."** Clusters of charming button-like white flowers on a good cutting stem. 2 ft., June to August..... **Each, 25c; Doz., \$2.50**

## Anchusa (Alkanet)

**Italica, Dropmore.** Tall spikes of beautiful blue flowers blossoming all summer. 4 to 5 ft. high. Should be treated as biennials..... **Each, 25c; Doz., \$2.50**

## Aquilegias or Columbines

For planting in permanent borders or edges of shrubbery this old-fashioned favorite is one of the best. They thrive well with ordinary garden culture, but do best in partially shaded nooks.

**Aquilegia-Coerulea (Rocky Mountain Columbine).** Sepals deep blue, petals white..... **Each, 25c; Doz., \$2.50**

**Long-spurred Hybrids.** This is the most admired type of Columbines. The plants are of strong thrifty growth. The flowers of largest size vary in color through charming tones of cream, pink, lavender, blue, white, etc. Mixed colors..... **Each, 25c; Doz., \$2.50**

## Artemisia

**Lactiflora.** Panicles of creamy white flowers, most attractive when in bud. Distinct and ornamental in the hardy border, 3½ to 4½ feet. August-September..... **Each, 30c; Doz., \$3.00**

## Aster, Hardy (Michaelmas Daisy)

Hardy Asters are of easy cultivation in ordinary soils and exposures, and are among the best plants for the hardy border and for cut flowers. Flowers appear in the autumn and are brilliant blue, purple or white..... **Each, 25c; Doz., \$2.50**

## Bellis (Double English Daisy)

**Perennis.** Dwarf plants, particularly desirable for borders. Mixed White and Pink..... **Each, 25c; Doz., \$2.50**

## Bleeding Heart

**Dicentra Spectabilis.** Highly prized for border and cemetery planting because of their bushy growth. Flowers are of rose-colored, heart shaped, produced in early spring..... **Each, \$1.00**

## Bocconia

**Cordata.** A hardy perennial of tropical-like growth, with foliage of an excellent green, and plume-like flowers of creamy-white. Will reach a height of 7 to 8 feet if planted in rich soil and given plenty of room..... **Each, 25c; Doz., \$2.50**

## Boltonia (False Chamomile)

A showy, native, hardy perennial plant with large aster-like flowers and attractive grey-green foliage. **Asteroides.** White. **Latisquama,** Lavender-pink..... **Each, 25c; Doz., \$2.50**

## Buddleia (Butterfly Bush or Summer Lilac)

**Magnifica.** Usually classed as a shrub, but is very desirable for large plant borders. Flowers continuously all season..... **Each, 60c**

## Canterbury Bells or Campanulas

Bell-shaped flowers, equally useful for flower border, shrubbery, or wild garden. Biennial. **Campanula Medium (Canterbury Bell).** White, Blue, Rose and striped..... **Each, 25c; Doz., \$2.50**  
**Campanula Carpatica (Carpathian Hare Bell).** Ideal for border or rocky planting, being about 8 inches high; flowers from June till frost. Blue or White..... **Each, 25c; Doz., \$2.50**

## Chrysanthemums (Hardy)

They are quite hardy if planted in a well-drained position, and, with a slight covering of litter during the winter..... **Each, 25c; Doz., \$2.50**

**Autumn Glow,** pinkish-bronze. **Old Homestead,** pink. **Victory,** white. **Indian,** red. **Golden Queen,** yellow.



Canterbury Bells and Foxglove

## Coreopsis

**Lanceolata Grandiflora.** The flowers are a rich golden-yellow, of graceful form and invaluable for cutting..... **Each, 25c; Doz., \$2.50**

## Daisies

**Shasta Daisy (Alaska).** Graceful and elegant pure-white flowers with yellow centers; lasts a long time..... **Each, 25c; Doz., \$2.50**

**King Edward VII.** Very large, handsome pure white flowers of fine form. Height, 2½ ft..... **Each, 25c; Doz., \$2.50**

## Day Lilies

**Funkia Coerulea (Blue Day Lily).** Blue, broad, green leaves..... **Each, 35c; Doz., \$3.50**

**Funkia Subcordata Grandiflora Alba (White Day Lily, August Lily).** Pure white, lily shaped, fragrant flowers..... **Each, 45c; Doz., \$4.50**

**Hemerocallis Flava.** The best known variety, very fragrant, deep lemon, yellow flowers in June and July..... **Each, 25c; Doz., \$2.50**

**Hemerocallis Fulva.** Grows from four to five feet high, with trumpet-shaped flowers of a neutral orange color with darker shadings; June and July..... **Each, 25c; Doz., \$2.50**

## Delphinium or Larkspur

These are deservedly one of the most popular subjects in the hardy border, bold, attractive, and highly prepossessing plants of easiest culture; perfectly hardy.

**Fancy Hybrids "Blue Bird" strain.** Plants of strong vigorous habit with immense spikes of very large flowers in every tone of blue to richest purple as well as many unusual rosy pastel shades. Mixed colors only..... **50c Each; 3 for \$1.25; Doz., \$15.00**

**English Hybrids.** The plants are of strong, vigorous habit, with large flowers on spikes two feet and over long, the majority running in the lighter shades of blue..... **Each, 30c; Doz., \$3.00**

**Delphinium Belladonna.** Clear turquoise-blue flowers. The freest and most continuous blooming of all..... **Each, 30c; Doz., \$3.00**

## Hardy Perennial Plants—Continued

### Forget-Me-Not

**Myosotis Palustris Semperflorens.** A variety that is hardly ever out of flower; useful in a shady spot in the border.....**Each, 25c; Doz., \$2.50**

### Foxglove (*Digitalis*)

The strong flowerstalks frequently 4 to 6 feet high give an appearance of strength to the hardy border. (Biennial.)

**Each, 25c; Doz., \$2.50**

## Hardy Ferns

Our stock is grown in northern Minnesota, and shipments are made directly from there. Ask for special list.

### Gaillardia (Blanket Flower)

**Grandiflora.** One of the showiest hardy plants, growing about 2 feet high and succeeding in any soil in a sunny position; beginning to flower in June; they continue the entire season. The large flowers are of gorgeous coloring. The center is dark-red brown, while the petals are marked with rings of brilliant crimson, orange and vermilion; excellent for cutting.....**Each, 25c; Doz., \$2.50**

### Gypsophila (Baby's Breath)

**Paniculata.** A beautiful old-fashioned plant, possessing a grace not found in a y other perennial.....**Each, 25c; Doz., \$2.50**

### Helenium (Sneezeweed)

Of the easiest culture, forming dense masses of blooms in late summer and autumn.

**Riverton Gem.** Old-gold, suffused with bright terracotta, changing to wall-flower red.....**Each, 30c; Doz., \$3.00**

### Hibiscus (Mallow)

A desirable border plant, succeeding in any sunny position, but doing best in a damp place; grow 3 to 5 feet high.

**Mallow Marvels.** A robust type of upright habit, producing an abundance of flowers of enormous size in all the richest shades of crimson, pink and white; mixed colors.....**Each, 30c; Doz., \$3.00**

### Hollyhocks

Growing 5 to 6 feet tall, these plants produce a pleasing effect planted either in rows on the lawn or among shrubbery. They require a deep, rich soil, and a sunny situation, and will repay for a little extra attention given them.

**Double White, Salmon, Yellow, Pink, Maroon**.....**Each, 25c; Doz., \$2.50**

**Single.** Many prefer the single-flowering Hollyhocks. They are usually of freer growth than the doubles, and present a very handsome appearance when covered with their artistic blossoms, mixed.....**Each, 25c; Doz., \$2.50**

### Iris Germanica

"S" and "F" indicate the erect "standards" or the drooping "falls."

**Price, 25c each; 3 for 65c, unless otherwise noted.**

**Afterglow.** 36-inch, mid-season. An indescribable combination of yellow, pink, and gray.....**Each, 50c; 3 for \$1.40**

**Albert Victor.** S, soft blue; F, beautiful lavender. Large and fine. Forty inches. Pallida type.....**Each, 25c**

**Alcazar.** S, light bluish violet; F, deep purple with bronze veined throat.....**Each, 35c**

**Ambassadeur.** S, lavender; F, deep reddish violet, with a rich orange beard. Three to four feet.....**Each, 75c**

**Caprice.** 24-inch, early. Beautiful wine color; fragrant.

**Celeste.** Azure blue, self color. Very fine.**Each, 25c**

**Dorothea.** 18-inch, white, early. Large petals, faintly veined with blue.

**Dream.** A clear even pink. A delicate and beautiful Iris and a very close approach to the perfect pink self. A charming Pallida type; 3 feet.....**Each, 75c**

### Iris Germanica—Continued

**Price, 25c each; 3 for 65c, unless otherwise noted.**

**Fairy.** 40-inch, mid-season. White fringed with blue, golden beard; very fragrant.

**Flavescens.** 30-inch, mid-season. Soft yellow sweet scented. An excellent harmonizer.

**Florentina Alba.** 24-inch, early. Pearly white, sweet scented.

**Gertrude.** 34-inch, very early and fragrant. Lovely violet blue.

**Her Majesty.** 24-inch, mid-season. S, rosy pink; F, deeper pink, distinctly veined.

**Iris King.** 28-inch late. S, fine yellow; F, deep velvety crimson, edged with gold.....**Each, 35c; 3 for \$1.00**

**Isoline.** 36-inch, late. S, grayish-pink; F, soft old rose.....**Each, 40c; 3 for \$1.10**

**Lohengrin.** 28-inch, mid-season. Flowers large orchid-pink, charming with Day Lilies.....**Each, 30c; 3 for 80c**

**Lord of June.** 40-inch, mid-season. S, lavender blue; F, rich violet purple.....**Each, 75c; 3 for \$2.00**

**Lorely.** 30-inch, mid-season. S, yellow; F, deep blue, edged with cream. Free bloomer.

**Mrs. Neubronner.** 22-inch, mid-season. A free blooming, golden yellow self.

**Mme. Chereau.** Tall, mid-season. Popular favorite to work into groups of darker Iris.

**Pallida Dalmatica.** 40-inch, late. Fragrant. Exquisite blending of blues, flushed with pink. Universal favorite.....**Each, 30c; 3 for 85c**

**Queen of May.** 30-inch, mid-season. Lovely pink self. Charming and popular.

**Rhein Nixe.** Tall, late. S, large and white; F, pansy blue, edged white.

**Sherwin Wright.** 24-inch, early. Fine, clear yellow.....**Each, 30c; 3 for 80c**

**Seminole.** 28-inch, mid-season. S, soft violet rose; F, velvety crimson, orange beard.....**Each, 75c; 3 for \$2.00**

**Mixed Iris Germanica**.....**3 for 50c; Doz., \$1.75**

### Japanese Iris

These need plenty of water at blooming time, but no lime. For cut flowers, gather in the bud.

**Mixed Japanese Iris**.....**Each, 25c; Doz., \$2.50**

### Lily of the Valley

Field-grown clumps, for outdoor planting.  
**Each, 35c; Doz., \$3.50**

### Monarda (Bergamot)

Showy plants, growing from two to three feet high, succeeding in any soil or position, with aromatic foliage; flowers during July and August.

**Didyma (Oswego Tea).** Flowers bright scarlet.....**Each, 25c; Doz., \$2.50**

### Physostegia (False Dragon Head)

Grows three to four feet high, bearing spikes of delicate tubular flowers not unlike a gigantic heather.

**Virginica.** Soft pink.....**Each, 25c; Doz., \$2.50**

### Pinks (Hardy Garden)

**Dianthus Plumarius (Hardy Garden or Pheasant Eye Pinks).** These "Clove Pinks," so much used for edgings of old-fashioned gardens, bloom most profusely during May and June.**Each, 25c; Doz., \$2.50**

### Platycodon (Balloon Flower, or Japanese Bellflower)

They form large clumps and are excellent for planting in permanent borders or among shrubbery.

**Grandiflorum.** Large blue, 2 ft.....**Each, 25c; Doz., \$2.50**

## Hardy Perennial Plants—Continued

### Peonies

<b>Adolphe Rousseau.</b> Semi-double brilliant garnet bloom	Each, \$2.00
<b>Asa Gray.</b> Pale flesh color, splashed with deeper tints	Each, \$1.00
<b>Courourne D'Or.</b> Semi-rose type with ring of yellow stamens	Each, 75c
<b>Delachel.</b> Deep purple, crimson reflex. Free bloomer; compact rose type	Each, \$1.00
<b>Eduis Superba.</b> Strong grower, free bloomer, and very fragrant. Excellent for cut flowers. Rose pink	Each, 75c
<b>Felix Crousse.</b> Ruby red, large, compact, fragrant bloom	Each, \$1.25
<b>Festiva Maxima.</b> Large white flowers, flecked with crimson	Each, 50c
<b>Karl Rosenfeld.</b> Brilliant velvety crimson, compact bloom	Each, \$2.00
<b>La Tulipe.</b> Lilac-white, outer petals striped with crimson. Large, flat, rose-type; fragrant; very tall, strong growth	Each, 75c
<b>Marie Lemoine.</b> Strong and vigorous White	Each, \$1.00
<b>Mons. Jules Elie.</b> Large compact flower of deep pink with silvery sheen	Each, \$2.00
<b>Queen Victoria.</b> Free, clustered bloom fragrant. "One of the best every day whites."	Each, 60c
<b>Rubra Oficialialis.</b> Earliest and most brilliant red Peony	Each, \$1.25
<b>Rubra Superba.</b> Deep rose carmine, fragrant bloom	Each, \$1.00
<b>Venus.</b> Delicate shell-pink with a collar of flesh-white	Each, \$1.50

### Peonies Under Color

Strong 3 to 5 eye divisions.	
Double Pinks	Each, 50c; Doz., \$5.00
Double Whites	Each, 60c; Doz., 6.00
Double Reds	Each, 75c; Doz., 7.50

### Hardy Phloxes

Each, 35c; Doz., \$3.50

<b>Baron Von Dedem.</b> Brilliant orange-scarlet with carmine eye. Immense trusses and individual flowers.
<b>Bridesmaid.</b> Tall, pure white with large crimson carmine eye.
<b>Champs Elysee.</b> Rich, purplish-crimson.
<b>Eclairer.</b> Bright carmine with light halo.
<b>Europa.</b> Blush white, with a large deep pink center; the flower truss is very large, while the florets are also of gigantic size.
<b>Ferdinand Cortez.</b> Deep crimson.
<b>F. G. Von Lassburg.</b> Splendid pure white; very large trusses; free bloomer.
<b>Jules Sandeau.</b> Dwarf; very large flowering; pure pink; extra fine variety.
<b>Miss Lingard (Suffruticosa).</b> Pure white with pale pink eye, long graceful panicles. One of the best phloxes in cultivation. Blooms in June.
<b>Mrs. Jenkins.</b> Flowers large, pure white. Early
<b>Rheinlander.</b> A beautiful salmon-pink, flowers and trusses of immense size.
<b>Rhynstrom.</b> Lively rose-pink, immense trusses.
<b>Riverton Jewel.</b> A lovely shade of mauve-rose.
<b>R. P. Struthers.</b> Tall, rosy-carmine with claret-red eye, fine.
<b>Thor.</b> A beautiful lively shade of deep salmon-pink, suffused and overlaid with a scarlet glow. Has aniline-red eye.
Each, 35c; Doz., \$3.50
<b>Hardy Phlox.</b> Assorted colors; we have many more varieties than those listed above and can supply a fine mixture at... 3 for 85c; Doz., \$2.50; 100, \$18.00

### Poppy (Oriental)

Perennial poppies are of the easiest culture. After flowering the plants die back, usually reappearing along in early September, or as soon as the weather gets cool. During this resting period care should be taken in cultivating the beds that the roots are not injured, any disturbance at this time usually resulting in failure.

Each, 30c; Doz., \$3.00

### Pyrethrum Roseum

**Hybridum.** Too much cannot be said in favor of this grand hardy perennial, which will thrive in any good garden soil where there is good draining and full exposure to the sun. Each, 25c; Doz., \$2.50

### Rudbeckia (Cone-flower)

Grow and thrive anywhere giving a wealth of bloom, which are well suited for cutting.

**"Golden Glow."** Produces masses of double golden-yellow Cactus Dahlia-like flowers from July to September. Each, 25c; Doz., \$2.50

**Newmani.** Dark orange-yellow flowers, with deep purple cone three feet high; flowers from July to September. Each, 25c; Doz., \$2.50

**Purpurea (Giant Purple Cone-flower).** Flowers about four inches across, of a reddish-purple with a large cone-shaped center of brown; three feet; blooms from July to October. Each, 25c; Doz., \$2.50

### Sedum

**Spectabile.** A foot high, or more. The most beautiful variety of all the Sedums, with large glaucous leaves, with rosy-purple flowers borne in large, flat, open heads. Each, 25c; Doz., \$2.50

### Sweet William

**Dianthus Barbatus.** These old-fashioned favorites are prized border plants. There is a great variety of rich colors, and the flowers are very fragrant. Each, 25c; Doz., \$2.50

### Tritoma (Red-hot Poker, or Torch Lily)

**Pfitzeri (The Everblooming Flame Flower).** With their large spikes of rich orange-scarlet flowers, they produce a striking effect planted either singly in the border, or in masses. Each, 35c; Doz., \$3.50

### Veronica (Speedwell)

**Spicata.** A valuable border plant, with long spikes of bright blue flowers, blooming in July and August. 1½ to 2 ft. Plant in a sunny location. Each, 25c; Doz., \$2.50

### Yucca Filamentosa (Adam's Needle)

A hardy evergreen plant with long, narrow leaves that are green the year round. The flowers are white, on long spikes. Each, 35c; Doz., \$3.50

## Rock Garden Plants

**Alyssum Saxatile Compactum,** yellow.

**Aubrietia,** pink lilac and violet.

**Arabis,** white.

**Cerastium,** small silvery foliage, white flowers.

**Campanula Carpatica,** Blue or White.

**Candytuft,** Hardy, white.

**Columbines,** assorted—plant in semi-shade.

**Dianthus Deltoides,** crimson or white.

**Ferns,** for shade or sun. Our selection.

**Gypsophila Repens,** pink and blue.

**Heuchera (Coralbells),** pink.

**Myosotis (Forget-Me-Not).** Plant in semi-shade.

**Mertensia Virginica,** blue bells, semi-shade.

**Phlox Subulata,** White, Lilac or Pink.

**Phlox Divaricata Canadensis,** White—semi shade.

**Pinks, Assorted Colors.**

**Plumbago Larpente,** deep blue.

**Polemonium Reptans,** blue—sun or shade.

**Polyanthus,** various colors—semi-shade.

**Saponaria,** White or Pink.

**Sedum Acre,** yellow.

**Sedum Sieboldi,** pink.

**Sedum Stolonifera,** purplish pink.

**Tunica Saxifraga,** light pink.

**Veronica Prostata,** light blue.

**Vinca Minor,** plant in shade.

**Violas or Tufted Pansies** in many colors, one of the most satisfactory plants for the rockery — will thrive in sun or shade.

We supply any of above Rock Garden Plants, 25c each; \$2.50 per dozen. Should be forwarded by express.

## Book on Rock Gardens

By F. F. Rockwell

You can have a rock garden at small cost and great enjoyment to yourself if you use this book. Its text and illustrations show how to pick the location, construct and prepare the soil. There are handy classified lists of plants to use. Price, \$1.00.

## Flowering and Ornamental Shrubs

Shrubs are not particular as to location; once planted they are there to remain. The time of bloom of the different varieties extends over nearly the whole season, though the greatest show is to be expected in spring and early summer. The variegated golden-leaved sorts, together with those which bear ornamental fruit, make a greatly varied display. Our list includes the best, well-tried kinds, and affords a good selection to choose from.

**Althea (Rose of Sharon).** An attractive hardy shrub, desirable on account of its large, showy blossoms, which appear in August and September. We have double red, white, purple, and rose.....  
.....3 or 4 Feet, Each, 75c

**Barberry Thunbergii (Japan Barberry).** One of the best lawn and border shrubs. Compact, low-growing, especially suitable for a hedge or as a border along walks and drives.....  
15 to 18 Inch, Each, 35c; 10, \$3.00; 100, \$20.00;  
18 to 24 Inch, Each, 50c; 10, \$4.00; 100, \$30.00;  
2 to 3 Foot, Each, 65c; 10, \$5.00; 100, \$40.00

**Calycanthus (Carolina Allspice, or Sweet-scented Shrub).** Handsome plant, growing about 6 feet tall, with large, glossy foliage and spicily fragrant chocolate-red flowers about 2 inches across.....  
.....2 to 3 Feet, Each, \$1.00

**Cornus.** Hardy shrubs with handsome foliage.  
**Siberica (Siberian Dogwood).** Rapid growing attaining 6 to 10 feet in height. Clusters of small white flowers appear in May and June. Its chief attraction is the bright-red bark in winter.....  
.....3 to 4 Feet, Each, 65c

**Stolonifera Lutea.** Grows 8 to 10 feet high. Has dark blood-red branches. The flowers, which appear in May and June are greenish-white in flat-topped clusters, followed by bunches of black berries.....  
.....3 to 4 Feet, Each, 75c

**Cydonia Japonica (Japan Quince).** The large, brilliant bright-red flowers appear early in spring, before the leaves and every branch is covered with bright, glossy green foliage all summer. Splendid hedge plant.....  
.....2 to 3 Feet, Each, \$1.00

**Deutzias.** Very ornamental and popular shrubs with showy white or blush flowers appearing in tassel-like clusters in spring or early summer. Slender, arching branches.

**Lemoinei.** Spreading shrub, 3 feet high. Pure white flowers in broad clusters. More vigorous, hardier, and with more showy flowers than *Gracilis*.....  
.....2 to 2½ Feet, 75c

**Pride of Rochester (D. Crenata).** Grows to 6 feet. Blooms in May in advance of the others. With very large double white flowers.....  
.....2 to 3 Feet, Each, 50c; 3 to 4 Feet, Each, 65c

**Gracilis.** Low growing, 3 feet high with slender arching branches; bright green leaves; snow-white flowers in May and June.....  
.....18 to 24 Inch, Each, 75c

**Forsythia (Golden Bell).** One of the showiest early flowering shrubs with brilliant yellow flowers borne in profusion along slender branches before the leaves appear.

**Fortunei.** A spreading bush with upright branches and dark shiny foliage. Deep yellow flowers.....  
.....2 to 3 Feet, Each, 60c; 3 to 4 Feet, 75c

**Suspensa (Weeping Golden Bell).** Long, willowy branches covered with trumpet-shaped yellow flowers appearing before the leaves. Excellent for edges of groups as the branches drop over to the greensward.....  
.....3 to 4 Feet, 80c

**Honeysuckle, Bush (Lonicera).** Shrubs of upright habit.

**Tartarica.** A popular variety growing 8 to 10 feet tall. Produces an abundance of fragrant pink blossoms in May and June, followed by red berries in the late Summer and Fall.....  
.....3 to 4 Feet, Each, 75c

**Morrowii (Japanese Bush Honeysuckle).** Grows only 4 to 6 feet tall with wide-spreading branches. Vigorous grower, bearing snow-white flowers in May and June, followed by bright red fruits which are very decorative.....  
.....3 to 4 Feet, Each, 75c



**Hydrangea Paniculata Grandiflora**

**Hydrangea.** One of the best and most reliable shrubs giving a great abundance of showy white flowers in Autumn when blossoms are few. Hardy; grows well in any rich, moist soil.

**Arborescens (Snowball Hydrangea).** The snow-white blooms are much like the Snowball flowers, but larger and more attractive.....  
.....Each, \$1.00

**Paniculata Grandiflora.** The most popular and widely planted shrub in cultivation. Adapted to any part of the country, perfectly hardy.....  
.....2 to 3 Feet, Each, 85c; 10 for \$7.00; 3 Feet and Up, Each, \$1.25

**Lilacs (Syringa).**

**Vulgaris (Common).** A tall growing shrub (8 to 15 feet) having large clusters of fragrant purple flowers in the Spring.....  
.....2 to 3 Feet, Each, 75c; 3 to 4 Feet, Each, \$1.00

**Vulgaris Alba (Common White Lilac).** Similar to purple variety.....  
.....2 to 3 Feet, Each, \$1.00

**Persica (Persian Lilac).** Habit more open and branches more slender and drooping than the Common Lilac. Flowers light purple.....  
.....2 to 3 Feet, Each, 75c; 3 to 4 Feet, Each, \$1.00

**Charles X.** Magnificent clusters of single, rosy-purple flowers.....  
.....2 to 3 Feet, Each, \$1.25

**Philadelphus (Mock Orange; Syringa).**

**Coronarius (Garland Syringa).** One of the best and earliest. Bearing immense clusters of pure-white fragrant flowers in May. Grows 6 to 12 feet.....  
.....2 to 3 Feet, Each, 50c; 3 to 4 Feet, Each, 75c

**Grandiflorus (Large-flowered Syringa).** A very vigorous upright grower. Slender branches with an abundance of pure white, slightly fragrant flowers in June.....  
.....3 to 4 Feet, 75c

**Privet (Ligustrum).**

**Amurensis (Amoor River Privet).** The best for hedge planting, and most desirable for this section  
12 to 18 inch, 10, \$1.50; 100, \$12.00  
18 to 24 inch, 10, \$2.00; 100, \$18.00  
2 to 3 feet, each, 35c; 10, \$2.75; 100, \$22.00  
3 to 4 feet, each, 45c; 10 for \$3.50; 100, \$30.00

**Ibota.** A graceful border shrub growing about 10 feet with spreading and curving branches.....  
18 to 24 Inch, Each, 30c; 10, \$2.00; 100, \$15.00;  
2 to 3 Feet, Each, 35c; 10, \$2.50; 100, \$20.00

## Ornamental Shrubs—Continued

**Spireas.** Spireas are all medium sized or low shrubs and well adapted for borders of shrubberies.

**Van Houttei (Bridal Wreath).** The white flowers are in clusters, and are so numerous that when in full bloom the bush resembles a snow drift.....  
..... 2 to 3 Feet, Each, 50c;  
3 to 4 Feet, Each, 60c; 4 to 5 Feet, Each, 75c

**Anthony Waterer.** A very low-growing shrub with deep rose-colored blooms all through the latter of the Summer.....  
..... 18-24 Inch, Each, 60c; 2-2½ Feet, Each, 75c

**Billardii.** Strong growing plant, blooming for July and August. Grows to a height of 3 to 4 feet. We have the pink-flowered variety.....  
..... 3 to 4 Feet, Each, 75c

**Opulifolia (Ninebark).** A strong-flowered shrub with white flowers along the stems in June. Grows to a height of 4 to 5 feet.....3 to 4 Feet, Each, 75c

**Symphoricarpus (Waxberry).** A good native shrub with attractive white berries in autumn and early winter.

**Racemosus (White Snowberry).** A medium shrub of bushy form with pink flowers in July, followed by white waxy berries in the autumn and early winter.....2 to 3 Feet, 50c; 3 to 4 Feet, 60c

**Vulgaris (Indian Currant).** A low-growing, spreading shrub of graceful habit and attractive foliage. Noted for its beautiful clusters of red berries.....  
..... 3 to 4 Feet, 50c

**Viburnum.** A superb, much admired group of shrubs bearing, in June, great clusters of white flowers in the form of a snowball.

**Dentatum (Arrow-wood).** A shrub of medium size with glossy leaves, white flowers in June, fine steel-blue berries in the fall.....  
..... 3 to 4 Feet, Each, \$1.00

**Opulus (Highbush Cranberry).** A tall-growing shrub. One of the best for general planting. Leaves are broad and elegant. Flowers are pure white in clusters, followed by bright scarlet berries in the fall which in winter are very attractive.....  
..... Each, 2 to 3 Feet, \$1.00

**Opulus Sterilis (Common Snowball).** Shrub growing to a height of 8 to 10 feet, which is covered with globular clusters of snowy white flowers in May. Very attractive.....2 to 3 Feet, \$1.00

**Weigelia (Diervilla).** Beautiful shrubs that bloom in May, June and July. The flowers are produced in so great profusion as almost entirely to hide the foliage.

**Rosea.** A reliable and fine variety with rose colored flowers. Shrubs growing to a height of 4 to 5 feet. Flowers in June.....3 to 4 Feet, Each, 75c

**Eva Rathke.** One of the best of the Weigelias. Plant of vigorous habit, blooming freely and having large, well-shaped crimson blossoms.....  
..... 3 to 4 Feet, Each, \$1.25

**Rhus (Sumac).** The Sumacs are mostly very hardy and good ornamental plants. Their rich fern-like leaves give a peculiar and somewhat tropical suggestion to a planting. The rich, bright colors of the Sumacs in the fall make them very attractive.

**Copalina (Black or Shining Sumac).** A shrub or small tree at times growing to a height of 20 feet, with shiny dark green leaves which turn a rich crimson in the fall.....2 to 3 Feet, Each, 75c

**Glabra laciniata (Cut-leaved).** One of the best species for mass or other planting on account of its deeply cut, beautiful fern-like leaves, which are dark green above and white beneath, crimson fruits and rich autumnal coloring.....  
..... 2 to 2½ Feet, Each, \$1.00

**Typhina laciniata (Staghorn Sumac).** The branches are densely covered with velvety hairy-like growth resembling the developing Elks Horn. Deeply serrated leaves whose deep crimson color and persistent crimson fruit makes it attractive.....  
..... 3 to 4 Feet, Each, 75c



Spirea Van Houttei (Bridal Wreath)

## Hardy Climbing Vines

**Ampelopsis Veitchii (Japan or Boston Ivy)**

Extremely rapid grower. Handsome, glossy green foliage which in fall changes to orange and scarlet. The handsomest vine possible for growth on brick or stone walls. Medium, 75c; 2 Years, Each, \$1.00

**Aristolochia Siphon (Dutchman's Pipe)**

Of rapid growth and large heart-shaped leaves; is suitable to cover arbors and for screens. Bears brownish flowers, the corolla of which resembles a miniature pipe. 2 Year, Each, \$1.00

**Clematis Paniculata**

The finest small-flowered Clematis extant. A wonderfully rapid grower, quickly covering trellises, arbors, etc. The flowers are pure white, deliciously fragrant and produced with the greatest freedom. It flowers in September, when few other vines are in bloom. This is the easiest to grow and most popular of all the small flowered vines. 2 Years Old, Each, 50c

**Honeysuckles (Lonicera)**

**Belgica (Sweet Scented Monthly).** One of the most satisfactory Honeysuckles, producing continuously large trusses of red and yellow fragrant flowers.....  
..... 2 Year, Each, 85c

**Hall's Japan.** This is one of the finest of all vines that one can plant. It is attractive and thrives in practically all situations. Splendid on trellises, arches, porches, or for covering fences, poles and dead or ugly tree trunks. It is a strong, vigorous, almost evergreen sort, with pure white flowers, changing to yellow. Very fragrant, and covered with flowers from July to October; holds its leaves till January. The best bloomer of all.....  
..... 2 Year, Each, 50c

**Scarlet Trumpet.** Bright red trumpet-shaped flowers. Blooms very freely the entire season.....  
..... 2 Year, Each, 50c

**Wistarias**

One of the best hardy climbers. When given a sunny situation and liberal manuring grows rapidly, and presents when in bloom a magnificent appearance.

**Sinensis.** The favorite variety, producing thousands of pendulous clusters of delicate violet-blue blossoms, richly perfumed.....2 Year, Each, 75c

**Alba.** Of similar habit to Sinensis, with pure white flowers.....2 Year, Each, \$1.00

# Barnard's Lawn Grass Seed Mixtures

MAKE BETTER LAWNS THAN SOD

A well kept Lawn is the envy of the neighborhood. A lawn may be made from seed the first season and with intelligent care will continue to improve for years; the ground should be thoroughly drained and well prepared; the soil should not be made too rich as a rapid growth is not desirable in a lawn; seed may be sown from March until June and again during the Fall months. To make a new lawn, sow about 100 lbs. of Barnard's Lawn Seed to the acre and 1 lb. on 200 square feet. (10 by 20 ft.). The seed should be lightly raked into the soil, then the surface should be rolled or pressed firm to aid germination; seed scattered on the surface and left without covering is liable to be washed or blown away or eaten by the birds. For renovating an old lawn about half the quantity of seed should be sown or sow according to the condition of same.

An established lawn should receive a Spring dressing of sheep manure and bone meal, broadcast about 500 lbs. of the former and about 100 lbs. of the latter to the acre, if the lawn is in a fair condition sheep manure alone may be used.

Too close cutting of the grass should be guarded against, especially during the hot summer months.

## Barnard's "Perpetual Green" Lawn Mixture

It is a mixture of the finest Dwarf Evergreen Grasses that grow and flourish during different months of the year, so that a rich, deep, green, velvety lawn is constantly maintained. Our mixture is the result of several years' experimenting, and, as we now offer it, is unequalled. The quantity required for making a new lawn is 100 lbs. per acre, or for renovating old lawns, 50 lbs. per acre. For a plot 10x20, or 200 square feet, one pound is required for a new lawn, or about one-half pound for renovating.

Price: 1 lb., 50c; 3 lbs., \$1.45; 5 lbs., \$2.40; 10 lbs., \$4.75; 100 lbs., \$40.00.

## Barnard's "Shady Lawn" Mixture

It is composed of dwarf-growing grasses which are found naturally growing in shady places. Should the ground have become "sour" give a liberal sprinkling of wood ashes, lime or land plaster to sweeten the soil; stir thoroughly into the surface soil and then sow Barnard's "Shady-Lawn" Grass Seed at the rate of one pound for 200 square feet, or 100 pounds to the acre for a new lawn; for old lawns sow seed in proportion, according to the conditions.

Price: 1/2 lb., 35c; 1 lb., 60c; 3 lbs., \$1.75; 5 lbs., \$2.75; 10 lbs., \$5.25; 25 lbs., \$12.50.

## Barnard's "Choice" Lawn Seed

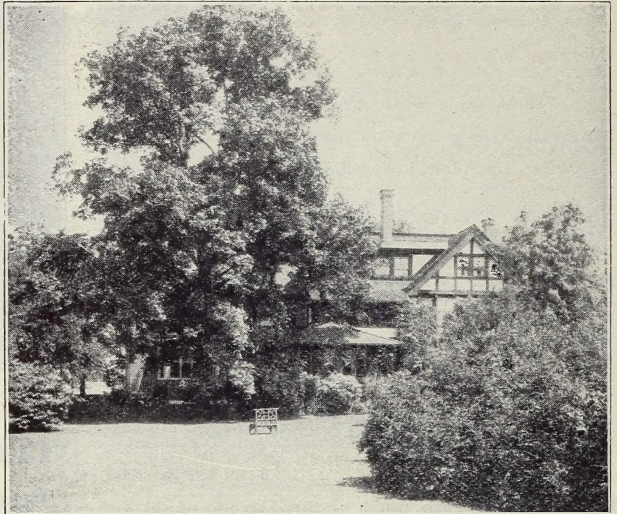
While containing fewer and less expensive grasses than our "Perpetual Green," this is a good well-balanced mixture which we do not hesitate to recommend.

1 lb., 40c; 5 lbs. for \$1.85; 10 lbs., \$3.50; 25 lbs., \$8.50; 100 lbs., \$30.00.

## "Quick Effect" Mixture

There is considerable demand for a grass seed that will produce a quick growing turf. For this purpose we have prepared a mixture of a few strong-germinating, vigorous-growing grasses which will produce a turf of fair quality within a few weeks after seeding. The grasses in this mixture are mostly annuals and biennials, and such a turf could be relied upon only for one or two seasons. A permanent lawn could be secured, however, by re-seeding at any time with any of our other mixtures.

Price per lb., 30c; 5 lbs., \$1.40; 10 lbs., \$2.70; 25 lbs., \$6.50; 100 lbs., \$25.00.



## Terrace Mixture

For seeding side hills, terraces, embankments, etc. A mixture of grasses whose roots penetrate deeply and bind the soil. When sowing, add to the mixture about one-fifth part of oats, which holds the soil together until the grasses have made a good start.

Lb., 60c; 5 lbs. for \$2.75

## Putting Green Mixture

This mixture is intended not only for putting greens, but for all lawns that are to be used as pleasure grounds and necessarily requiring a fine, dense turf—one capable of withstanding constant wear. With this in view, after experimenting with several combinations of the best fine-leaved, low-growing grasses, we selected those which, rightfully proportioned together, produced just the results we were endeavoring to obtain. We have furnished some of the best known golf clubs in the vicinity of Chicago with this mixture and it has given splendid results.

Price per lb., 60c; 5 lbs. for \$2.75. Special prices on large quantities.

We can supply Special Mixtures for Putting Greens, Tennis Courts, Hay and Pasture Lands. Prices on application. State your requirements.

## Separate Varieties of Grass Seed

Suitable For Lawns

**Creeping Bent Grass, German Seed.** Thrives on low land, produces a turf capable of withstanding a great deal of wear. Admirably adapted for lawns, also putting greens, tennis courts, etc. \$1.25 lb.

**Fancy Kentucky Blue Grass.** It is a true perennial, lasting indefinitely and improving every year. Its densely creeping root stocks, spreading habit and smooth, even growth, fine texture, and rich green color render it one of the best grasses for lawns. 1/2 lb., 30c; 1 lb., 50c; 3 lbs., \$1.35; 5 lbs., \$2.00; 10 lbs., \$3.75; 100 lbs., \$33.50.

**Fancy Red Top.** A very hardy, native perennial grass, succeeding on moist land. It accommodates itself to a variety of soils, even to dry situations, and stands our hot climate admirably. 1 lb., 40c; 5 lbs., \$1.75; 10 lbs., \$3.00

## White Dutch Lawn Clover

Splendid for sowing among grass on lawns and other places where a thick, quick growth is desired; especially adapted for places where it is difficult to establish grass. Sow 8 to 10 lbs. per acre, when sown alone.

1/4 lb., 25c; 1/2 lb., 40c; 1 lb., 70c; 5 lbs., \$3.25.

Above Prices Subject to Market Changes — Add for Postage If Wanted by Parcel Post.

# Planting Table for Small Vegetable Gardens

Quantity of seeds or number of plants required for a row 100 feet in length, with distances to plant, times for planting, and period required for production of crop in the central states.

Where "packets" are mentioned the quantity is based upon the liberal packages as supplied by us.

**NOTE**—\*Denotes the quantity of seed suggested in table should raise sufficient plants to transplant into a row 100 feet long. The seed should be sown in hot-bed from February to March for earliest results and later may be sown in a cold frame; if neither are at your command sow the seed in a well prepared seed bed in the open after the frosty weather has passed. (See table.)

Kind of vegetables	Seed or plants required for 100 feet of row	DISTANCE FOR PLANTS TO STAND		Time of planting in open ground	Ready for use after planting
		Rows apart, hand cultivation	Plants apart in rows		
Artichoke, Globe	1/2 oz.	2 to 3 ft.	2 to 3 ft.	Early spring	15 mos.
Artichoke, Jerusalem	2 qts.	1 1/2 to 2 ft.	1 to 2 ft.	Early spring	6 to 8 mos
Asparagus	1 oz.	1 to 2 ft.	3 to 5 in.	Early spring	3 to 4 yrs.
(for transplanting)					
Asparagus Plants	60 to 80	30 to 36 in.	15 in.	Early spring	1 to 3 yrs.
Beans, Bush	1 qt.	15 to 24 in.	3 to 6 in.	April to July	40 to 65 days
Beans, Pole	1/2 pt.	3 to 4 ft.	3 to 4 ft.	May and June	50 to 80 days
Beets	2 oz.	12 to 16 in.	3 to 6 in.	April to August	60 to 80 days
*Brussels Sprouts	1 pkt.	24 to 30 in.	16 to 24 in.	May and June	90 to 120 days
*Cabbage, Early	1 pkt.	24 to 30 in.	12 to 18 in.	March and April	90 to 130 days
*Cabbage, Late	1 pkt.	24 to 36 in.	16 to 24 in.	May and June	90 to 130 days
*Cardoon	1/2 oz.	2 ft.	12 to 18 in.	April and May	5 to 6 mos.
Carrot	1 oz.	12 to 15 in.	3 to 6 in.	April to June	75 to 110 days
*Cauliflower	1/4 oz.	24 to 30 in.	16 to 24 in.	April to June	100 to 130 days
*Celeriac	1 pkt.	18 to 24 in.	5 to 6 in.	May and June	100 to 150 days
*Celery	1 pkt.	18 to 36 in.	4 to 8 in.	May and June	120 to 150 days
*Chervil	1 pkt.	18 in.	6 to 8 in.	May	120 days
Chicory	1 pkt.	18 to 24 in.	4 to 6 in.	May and June	5 to 6 mos.
Collards	1 pkt.	24 in.	14 to 18 in.	Late spring	100 to 120 days
Corn Salad	2 ozs.	12 to 18 in.	3 to 6 in.	March to Sept.	60 days
Corn, Sweet	1 carton	30 to 36 in.	15 to 24 in.	May to July	60 to 100 days
Cucumber	1 pkt.	4 to 6 ft.	4 to 6 ft.	April to July	60 to 80 days
Dandelion	1 pkt.	18 in.	8 in.	Early spring	6 to 12 mos.
*Eggplant	1/2 oz.	24 in.	18 in.	May	100 to 140 days
Endive	1 oz.	18 in.	8 to 12 in.	April to July	90 days
Horse-Radish	75 roots	24 to 30 in.	14 to 20 in.	Early spring	1 to 2 yrs.
*Kale, or Borecole	1 pkt.	18 to 24 in.	18 to 24 in.	August and Sept.	90 to 120 days
*Kohlrabi	1 pkt.	15 to 24 in.	6 to 8 in.	March to May	60 to 80 days
Leek	1 oz.	12 to 16 in.	4 to 8 in.	March to May	120 to 180 days
Lettuce	1 pkt.	10 to 15 in.	6 in.	March to Sept.	60 to 90 days
Melon, Musk	1 pkt.	6 to 8 ft.	Hills, 6 ft.	April to June	120 days
Melon, Water	1 oz.	8 ft.	Hills, 10 ft.	May and June	100 to 120 days
Mustard	1 pkt.	12 in.	4 to 6 in.	March to May	60 to 90 days
New Zealand Spinach	1 oz.	24 to 36 in.	12 to 18 in.	Early spring	60 to 100 days
Okra, or Gumbo	2 ozs.	3 to 4 ft.	24 to 30 in.	May and June	90 to 140 days
Onion Seed	1 oz.	12 to 15 in.	3 to 6 in.	April and May	130 to 150 days
Onion Sets	2 qts.	12 to 15 in.	3 to 6 in.	March to May	90 to 120 days
Parsley	1 pkt.	12 in.	6 in.	Early spring	90 to 120 days
Parsnip	1 oz.	18 in.	4 to 6 in.	April and May	160 days
Peas	1 qt.	24 to 36 in.	3 to 6 in.	March to June	50 to 80 days
*Pepper	1 pkt.	18 to 24 in.	15 in.	May and June	100 to 140 days
Potato, Irish	1/2 peck	24 to 36 in.	15 in.	March to June	80 to 140 days
Potato, Sweet	75 slips	3 to 4 ft.	15 in.	May and June	140 to 160 days
Pumpkin	1 pkt.	8 to 10 ft.	Hills, 8 ft.	May to July	100 to 140 days
Radish	1 oz.	6 to 12 in.	3 to 4 in.	March to Sept.	20 to 40 days
Rhubarb Plants	33	3 to 4 ft.	3 ft.	Early spring	1 to 3 yrs.
Rutabaga	1 pkt.	18 to 24 in.	6 to 8 in.	May and June	60 to 80 days
Salsify	1 oz.	18 to 24 in.	4 in.	Early spring	120 to 180 days
Spinach	1 oz.	12 to 18 in.	4 in. 6 in.	Early spring	30 to 60 days
Squash, Bush	1 pkt.	3 to 4 ft.	Hills, 3 to 4 ft.	April to June	60 to 80 days
Squash, Late	1 pkt.	6 ft.	Hills, 6 ft.	April to June	120 to 160 days
Swiss Chard	1 oz.	16 in.	12 in.	April	60 days
Vegetable Marrow	1 pkt.	8 ft.	Hills, 8 ft.	April to June	110 to 140 days
*Tomato	1 pkt.	3 to 4 ft.	2 to 3 ft.	May and June	100 to 140 days
Turnip	1 pkt.	18 in.	3 to 6 in.	April (July)	60 to 80 days
Witloof Chicory, or French Endive	1 oz.	18 to 24 in.	12 to 15 in.	June and July	Autumn and Winter

**NOTE**—Where "packets" are mentioned the quantity is based upon the liberal packages as supplied by us.

For further information and cultural directions, refer to notes given under the heading of each variety.

# Barnard's Seeds



GALLOWAY LITHO. CO.  
MADE IN U.S.A.

## The W. W. Barnard Co.

Seedsman

3942 S. Federal St.,

Chicago, Illinois